



# Merrick Commons

Merrick, NY

New York-Newark-Jersey City (NY-NJ-PA)



**Robert Wachtler**

Leasing Representative

(516) 869-2654

[rwachtler@kimcorealty.com](mailto:rwachtler@kimcorealty.com)





AERIAL



GROSS LEASABLE AREA (GLA)

108,876 SF

PARKING SPACES

527

Robert Wachtler

Leasing Representative | (516) 869-2654 | [rwachtler@kimcorealty.com](mailto:rwachtler@kimcorealty.com)



# Merrick Commons

Merrick, NY

[www.kimcorealty.com/100280](http://www.kimcorealty.com/100280)



DENSITY AERIAL

Robert Wachtler

Leasing Representative | (516) 869-2654 | [rwachtler@kimcorealty.com](mailto:rwachtler@kimcorealty.com)



■ Available    ● Curbside Pick-up

| TENANT                            | SQ FT  |
|-----------------------------------|--------|
| 1 Bagel Plaza                     | 2,732  |
| 2 China Garden                    | 818    |
| 4 Lidl                            | 31,478 |
| 4A Sephora                        | 4,652  |
| 4B Party City                     | 10,302 |
| 5 Club Pilates                    | 2,741  |
| 7 Merrick Liquor                  | 1,131  |
| 8 Krafty Hands                    | 1,143  |
| 9 Moolala                         | 1,276  |
| 10 Massage Envy                   | 2,627  |
| 11 New Green Nail                 | 1,640  |
| 12 HomeGoods                      | 24,836 |
| 13 Available                      | 1,785  |
| 14 Teacher's Federal Credit Union | 2,063  |
| 15 Planet Fitness                 | 15,038 |
| 16 Sugaring NYC                   | 1,400  |
| 17 Frankie's                      | 3,214  |



Disclaimer: This site plan shows the approximate location, square footage, and configuration of the shopping center and adjacent areas, and is only illustrative of the size and relationship of the stores and common areas generally, all of which are subject to change. The showing of any names of tenants, parking spaces, square footage, curb-cuts or traffic controls shall not be deemed to be a representation or warranty that any tenants will be at the shopping center, the square footage is accurate, or that any parking spaces, curb-cuts or traffic controls do or will continue to exist. Moreover, any demographics set forth in this flyer are for illustrative purposes only and shall not be deemed a representation by Landlord or their accuracy. Availability of this property for rent is subject to prior rental or withdrawal of the property from the market at any time without notice.

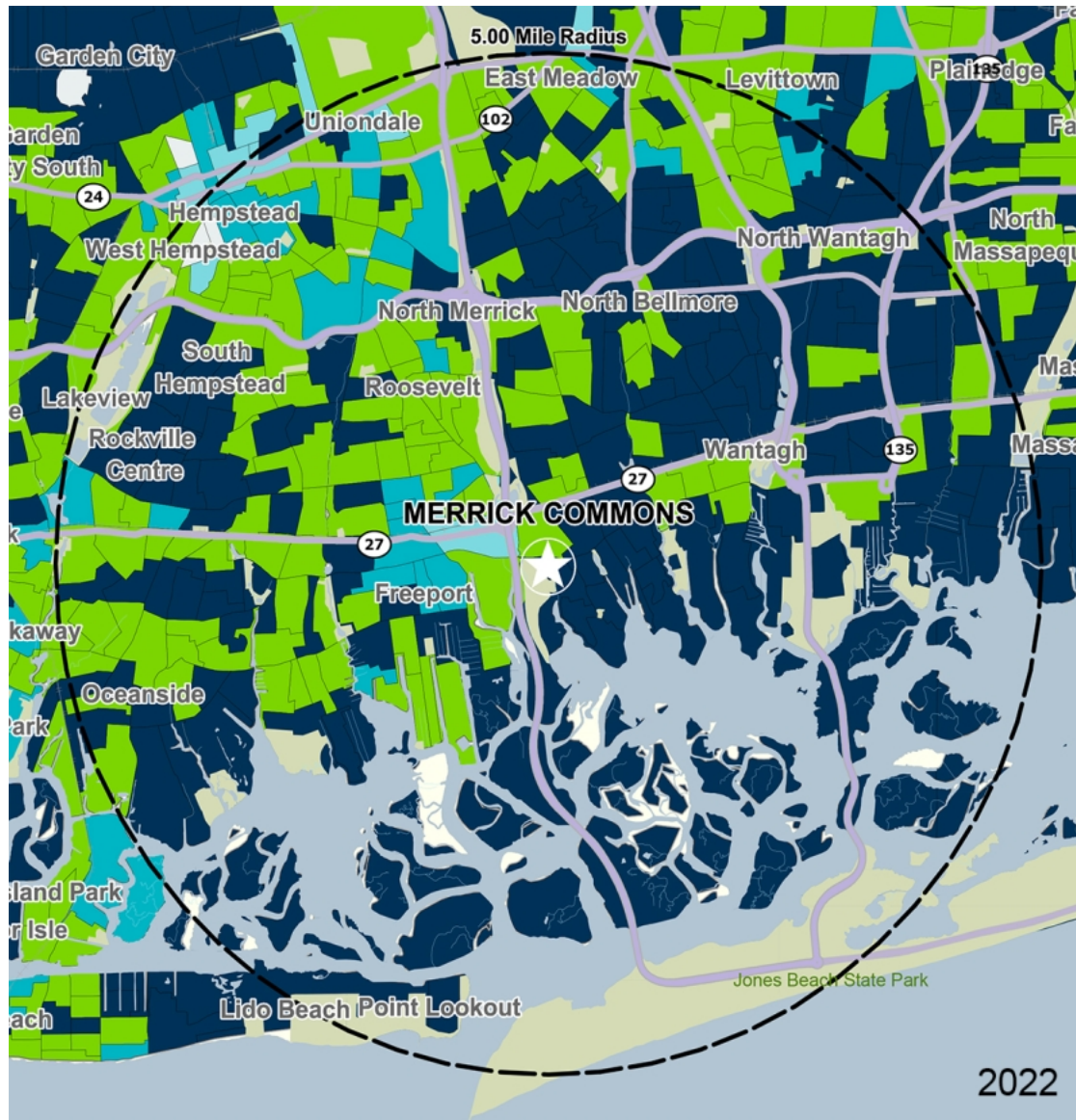
Robert Wachtler

Leasing Representative | (516) 869-2654 | rwachtler@kimcorealty.com



Revision Date: 05/12/23  
Original Date:

COMPETITION MAP



by Block Group

## Demographics

| 2022 ESTIMATES    | 1-MILE    | 3-MILES   | 5-MILES   |
|-------------------|-----------|-----------|-----------|
| Population        | 15,291    | 155,144   | 390,613   |
| Daytime Pop       | 13,961    | 123,582   | 333,042   |
| Households        | 5,029     | 49,355    | 125,721   |
| Average HH Income | \$164,830 | \$152,298 | \$151,874 |
| Median HH Income  | \$145,015 | \$128,138 | \$124,152 |
| Per Capita Income | \$54,323  | \$48,670  | \$49,209  |

## Average Household Income

Popstats, 4Q 2022, Trade Area Systems

- \$150K and up
- \$100K - \$150K
- \$75K - \$100K
- \$50K - \$75K
- \$0K - \$50K



# Merrick Commons

Merrick Rd. & Chernucha Ave., Merrick, NY



**Robert Wachtler**

Leasing Representative

(516) 869-2654

[rwachtler@kimcorealty.com](mailto:rwachtler@kimcorealty.com)