



Springfield S.C.

Springfield, PA

Philadelphia-Camden-Wilmington (PA-NJ-DE-MD)



Mark Curcio

Leasing Representative

(484) 417-7017

mcurcio@kimcorealty.com





Google Earth

AERIAL



| | |
|---------------------------|-------------------|
| GROSS LEASABLE AREA (GLA) | 175,068 SF |
| PARKING SPACES | 1,400 |
| PARKING RATIO | 8.00 per 1,000 SF |

Mark Curcio

Leasing Representative | (484) 417-7017 | mcurcio@kimcorealty.com





DENSITY AERIAL

Mark Curcio

Leasing Representative | (484) 417-7017 | mcurcio@kimcorealty.com



■ Available ● Curbside Pick-up

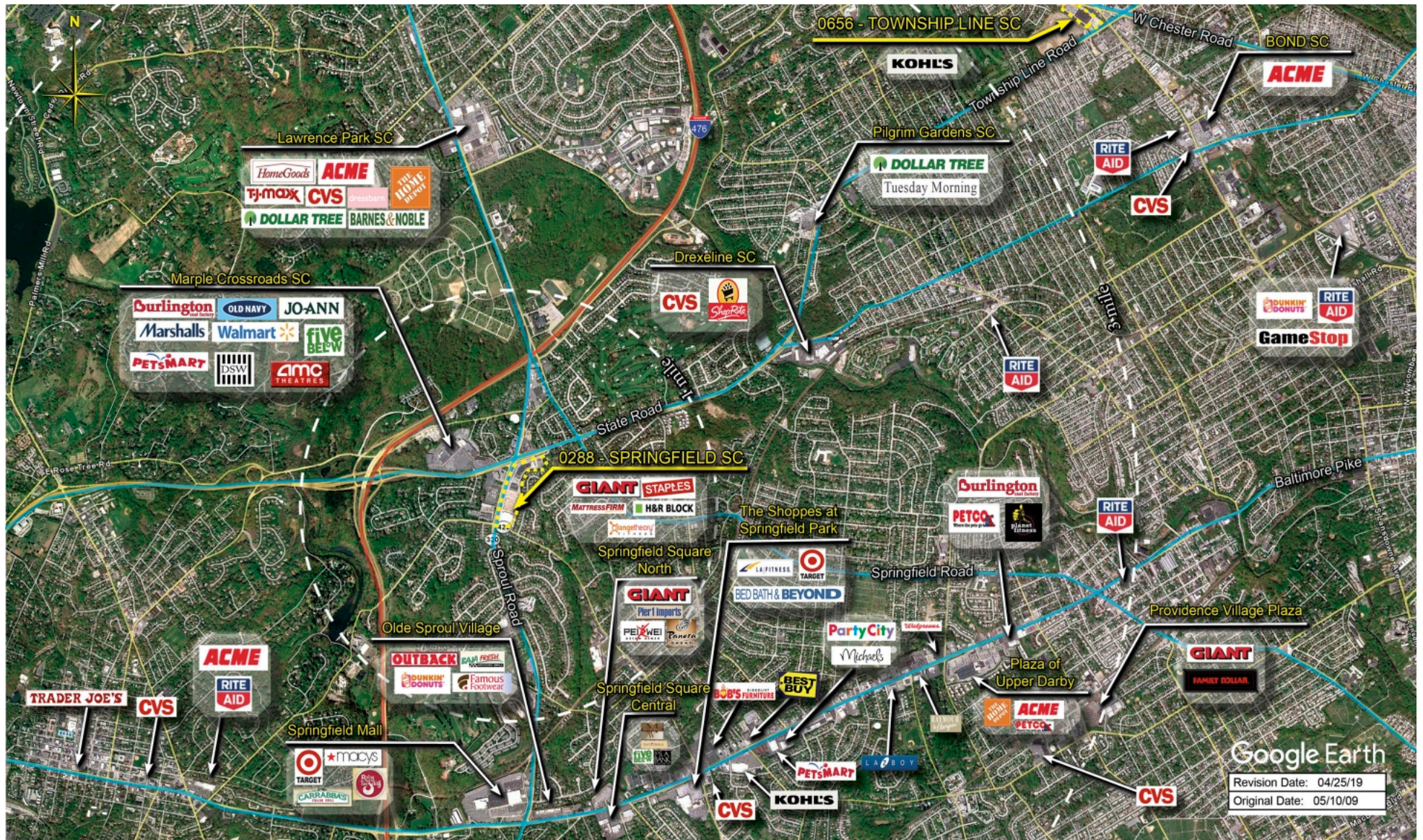


| TENANT | SQ FT |
|--------------------------------|--------|
| 1 Fleet Feet | 1,200 |
| 2 Anthony L. Cook, DMD, P.C. | 2,400 |
| 3 The Nail Box | 1,200 |
| 4 Capriotti's Sandwich Shop | 1,600 |
| 5 Johnny Paisanos | 2,000 |
| 6 Hibachi | 5,724 |
| 7 MKA Karate | 1,840 |
| 8 Empire Beauty School | 11,472 |
| 9 Leslie's Swimming Pool [...] | 3,041 |
| 10 GolfTec | 3,000 |
| 11 ATI Physical Therapy | 2,970 |
| 12 Long & Foster | 2,264 |
| 13 Chesterfield Cleaners | 600 |
| 14 Springfield Ale House | 3,044 |
| 15 Image Studios | 4,325 |
| 16 Any Lab Test Now | 1,200 |
| 17 Orangetheory Fitness | 3,964 |
| 18 Richard Douglas Hair Salon | 1,450 |
| 19 Fresenius Kidney Care [...] | 8,054 |
| 20 Staples | 35,087 |
| 21 Mattress Firm | 6,535 |
| 22 Verizon Wireless | 6,000 |
| 23 Giant Food Supermarket | 66,825 |
| 24 Crack Crab | 3,396 |
| 25 Clothes Mentor | 4,429 |
| K27 Available | 4,000 |

Disclaimer: This site plan shows the approximate location, square footage, and configuration of the shopping center and adjacent areas, and is only illustrative of the size and relationship of the stores and common areas generally, all of which are subject to change. The showing of any names of tenants, parking spaces, square footage, curb-cuts or traffic controls shall not be deemed to be a representation or warranty that any tenants will be at the shopping center, the square footage is accurate, or that any parking spaces, curb-cuts or traffic controls do or will continue to exist. Moreover, any demographics set forth in this flyer are for illustrative purposes only and shall not be deemed a representation by Landlord or their accuracy. Availability of this property for rent is subject to prior rental or withdrawal of the property from the market at any time without notice.

Mark Curcio

Leasing Representative | (484) 417-7017 | mcurcio@kimcorealty.com

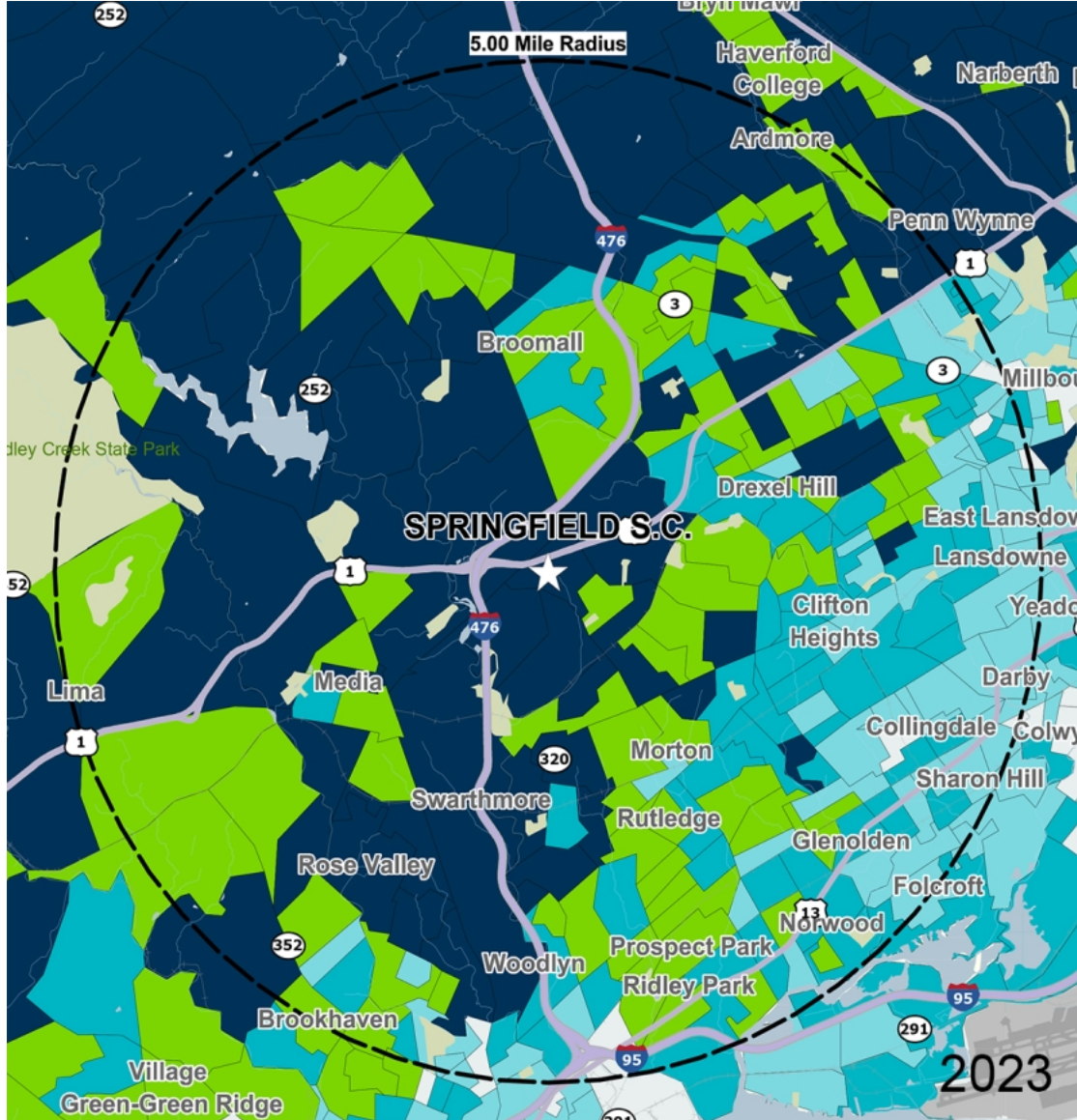


COMPETITION MAP

Mark Curcio

Leasing Representative | (484) 417-7017 | mcurcio@kimcorealty.com





by Block Group

Demographics

| 2022 ESTIMATES | 1-MILE | 3-MILES | 5-MILES |
|-------------------|-----------|-----------|-----------|
| Population | 7,961 | 113,514 | 357,211 |
| Daytime Pop | 9,128 | 106,026 | 327,177 |
| Households | 2,946 | 44,116 | 138,104 |
| Average HH Income | \$156,010 | \$125,702 | \$110,530 |
| Median HH Income | \$121,191 | \$97,109 | \$81,884 |
| Per Capita Income | \$58,925 | \$49,723 | \$43,368 |

Average Household Income

Popstats, 4Q 2022, Trade Area Systems



Springfield S.C.

US 1 & PA 420 & Sproul Rd., Springfield, PA



Mark Curcio

Leasing Representative

(484) 417-7017

mcurcio@kimcorealty.com