



Renaissance Centre

Altamonte Springs, FL

Orlando-Kissimmee-Sanford (FL)



Spencer Phelps
Leasing Representative
(407) 302-6518
sphelps@kimcorealty.com





AERIAL



GROSS LEASABLE AREA (GLA)	192,090 SF
PARKING SPACES	1,173
PARKING RATIO	6.11 per 1,000 SF

Spencer Phelps

Leasing Representative | (407) 302-6518 | sphelps@kimcorealty.com



Renaissance Centre

Altamonte Springs, FL

www.kimcorealty.com/105740



DENSITY AERIAL

Spencer Phelps

Leasing Representative | (407) 302-6518 | sphelps@kimcorealty.com

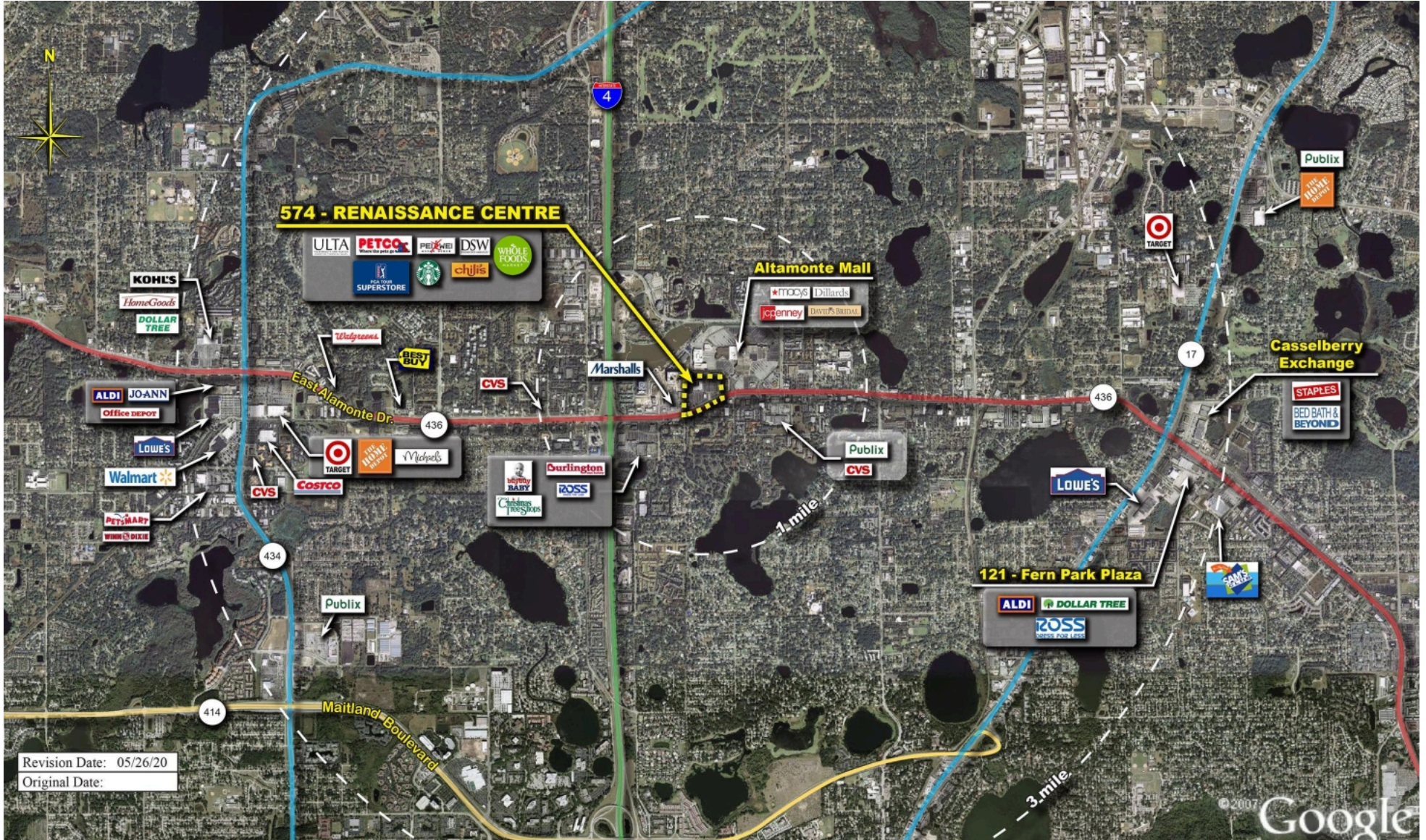


A Curbside Pick-up



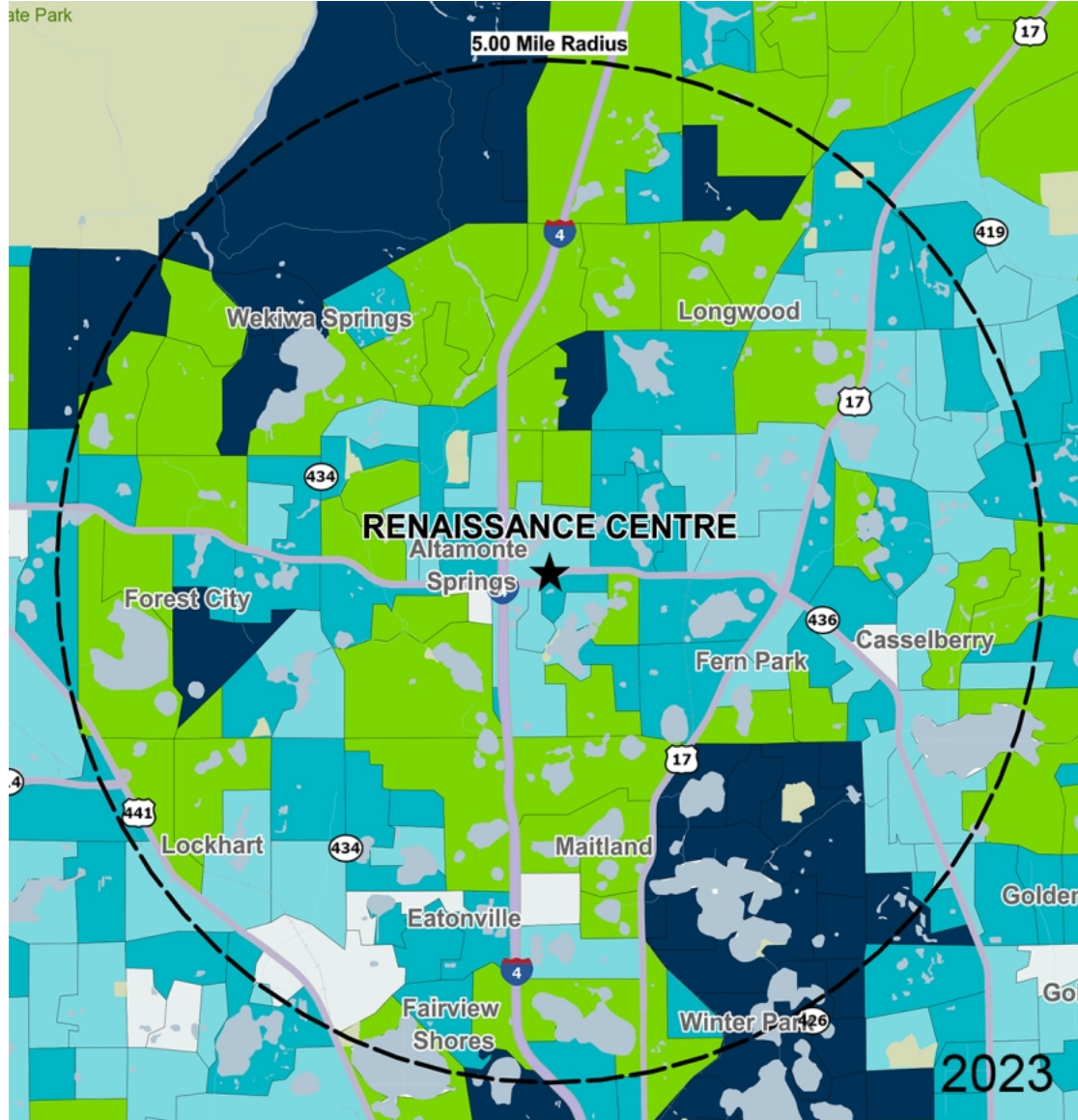
	TENANT	SQ FT
1	Jason's Deli	4,845
2	Anthony's Pizza	2,600
3	AdventHealth Well65+	10,458
4	America's Best Contacts & [...]	3,600
5	European Wax Center	1,200
6	Scrubs & Beyond	3,529
7	DSW Shoe Warehouse	23,990
8	PGA Tour Superstore	38,292
9	Massage Envy	3,532
10	Lane Bryant	5,100
11	Phenix Salon Suites	4,860
12	Jasmine Nails & Spa	1,965
13	Orangetheory Fitness	2,312
14	Hana Sushi	2,010
15	#1 Ann's Tailor	1,005
16	Chili's	6,004
17	Body Details	2,000
18	Starbucks Coffee	972
19	Pei Wei Asian Diner	3,000
20	Calico Corners	3,762
21	Sage Dental	2,600
22	Petco	15,400
23	Ulta	10,050
24	Whole Foods Market	40,000

Disclaimer: This site plan shows the approximate location, square footage, and configuration of the shopping center and adjacent areas, and is only illustrative of the size and relationship of the stores and common areas generally, all of which are subject to change. The showing of any names of tenants, parking spaces, square footage, curb-cuts or traffic controls shall not be deemed to be a representation or warranty that any tenants will be at the shopping center, the square footage is accurate, or that any parking spaces, curb-cuts or traffic controls do or will continue to exist. Moreover, any demographics set forth in this flyer are for illustrative purposes only and shall not be deemed a representation by Landlord or their accuracy. Availability of this property for rent is subject to prior rental or withdrawal of the property from the market at any time without notice.



Revision Date: 05/26/20
Original Date:

COMPETITION MAP



by Block Group

Demographics

2022 ESTIMATES	1-MILE	3-MILES	5-MILES
Population	15,727	94,087	238,289
Daytime Pop	25,296	130,725	269,487
Households	7,577	40,891	99,007
Average HH Income	\$71,120	\$83,722	\$92,273
Median HH Income	\$58,290	\$63,154	\$66,555
Per Capita Income	\$34,623	\$36,713	\$38,670

Average Household Income

Popstats, 4Q 2022, Trade Area Systems



Renaissance Centre

SR 436 & E. Altamonte Dr., Altamonte Springs, FL



Spencer Phelps

Leasing Representative

(407) 302-6518

sphelps@kimcorealty.com