



Veterans Memorial Plaza

Commack, NY

New York-Newark-Jersey City (NY-NJ-PA)



Tom Pira
Leasing Representative
(516) 869-2516
tpira@kimcorealty.com



Veterans Memorial Plaza

Commack, NY

www.kimcorealty.com/105750



AERIAL



| | |
|---------------------------|-------------------|
| GROSS LEASABLE AREA (GLA) | 251,254 SF |
| PARKING SPACES | 1,518 |
| PARKING RATIO | 6.04 per 1,000 SF |

Tom Pira

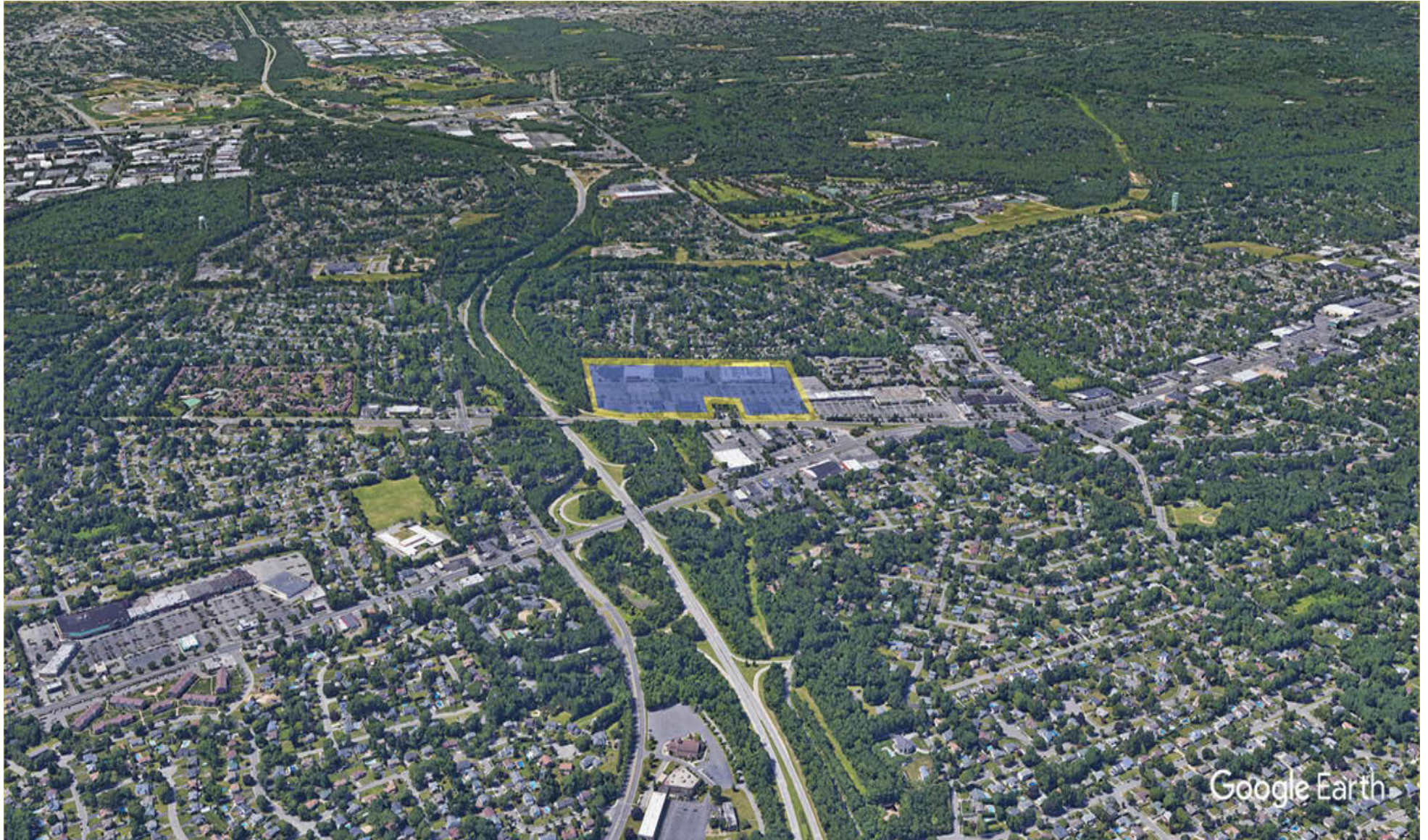
Leasing Representative | (516) 869-2516 | tpira@kimcorealty.com



Veterans Memorial Plaza

Commack, NY

www.kimcorealty.com/105750



DENSITY AERIAL

Tom Pira

Leasing Representative | (516) 869-2516 | tpira@kimcorealty.com



Veterans Memorial Plaza

Commack, NY

www.kimcorealty.com/105750

■ Non-Controlled ⓐ Curbside Pick-up



| | TENANT | SQ FT |
|----|------------------------------|--------|
| 1 | Party City | 9,885 |
| 2 | JPMorgan Chase Bank | 4,103 |
| 3 | Moe's Southwest Grill | 2,897 |
| 4 | Banfield Pet | 3,268 |
| 5 | LA Fitness | 25,022 |
| 6 | Ulta | 9,165 |
| 7 | Miller's Ale House | 9,611 |
| 9 | Leslie's Swimming Pool [...] | 3,800 |
| 10 | Burlington | 40,471 |
| 11 | Five Below | 11,090 |
| 12 | X Golf Commack | 11,300 |
| 13 | Harbor Freight Tools | 16,184 |
| 14 | Phenix Salon Suites | 11,253 |
| 15 | Whole Foods Market | 45,000 |
| 16 | Carters | 5,235 |
| 18 | Hobby Lobby | 42,970 |

Disclaimer: This site plan shows the approximate location, square footage, and configuration of the shopping center and adjacent areas, and is only illustrative of the size and relationship of the stores and common areas generally, all of which are subject to change. The showing of any names of tenants, parking spaces, square footage, curb-cuts or traffic controls shall not be deemed to be a representation or warranty that any tenants will be at the shopping center, the square footage is accurate, or that any parking spaces, curb-cuts or traffic controls do or will continue to exist. Moreover, any demographics set forth in this flyer are for illustrative purposes only and shall not be deemed a representation by Landlord or their accuracy. Availability of this property for rent is subject to prior rental or withdrawal of the property from the market at any time without notice.

Tom Pira

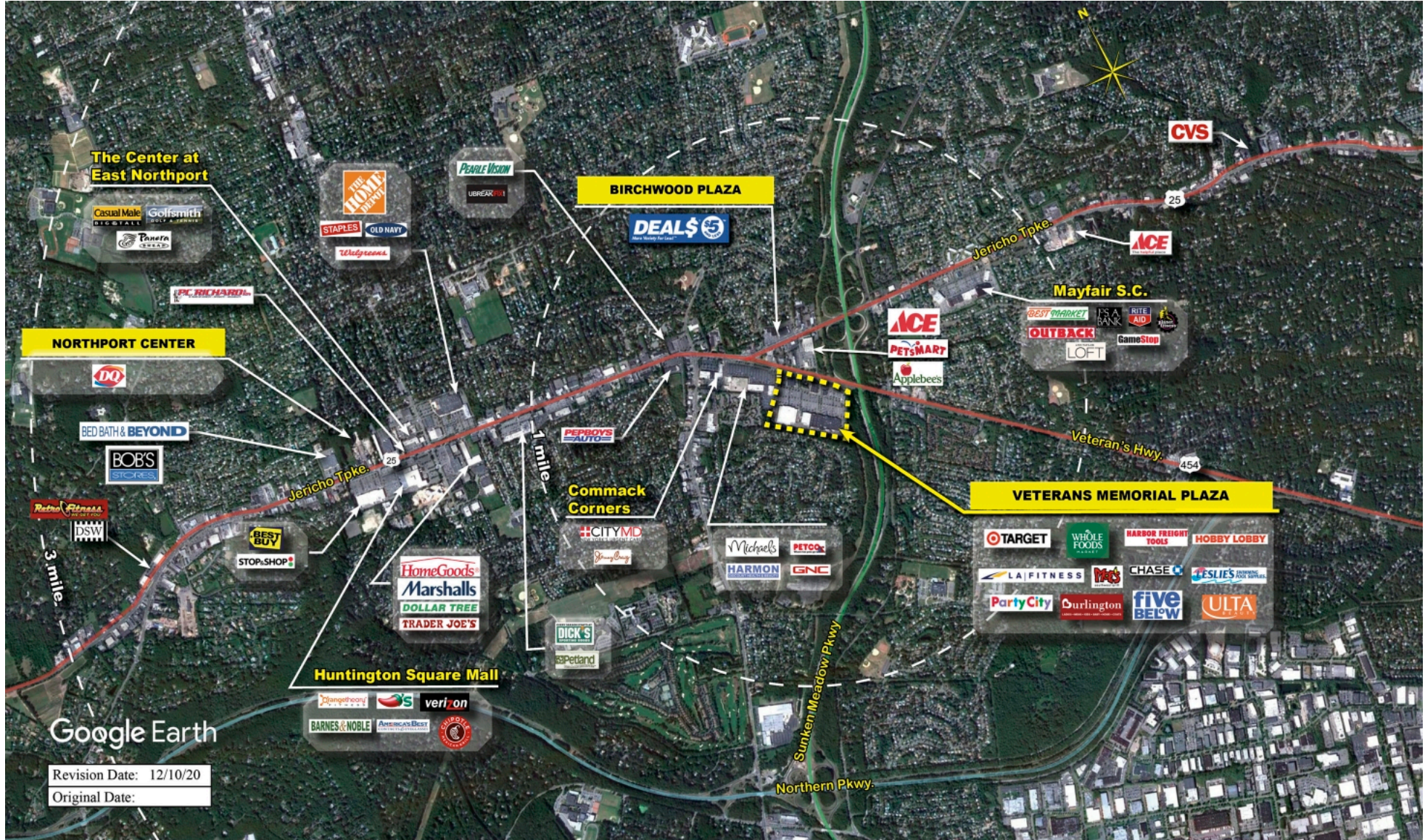
Leasing Representative | (516) 869-2516 | tpira@kimcorealty.com



Veterans Memorial Plaza

Commack, NY

www.kimcorealty.com/105750

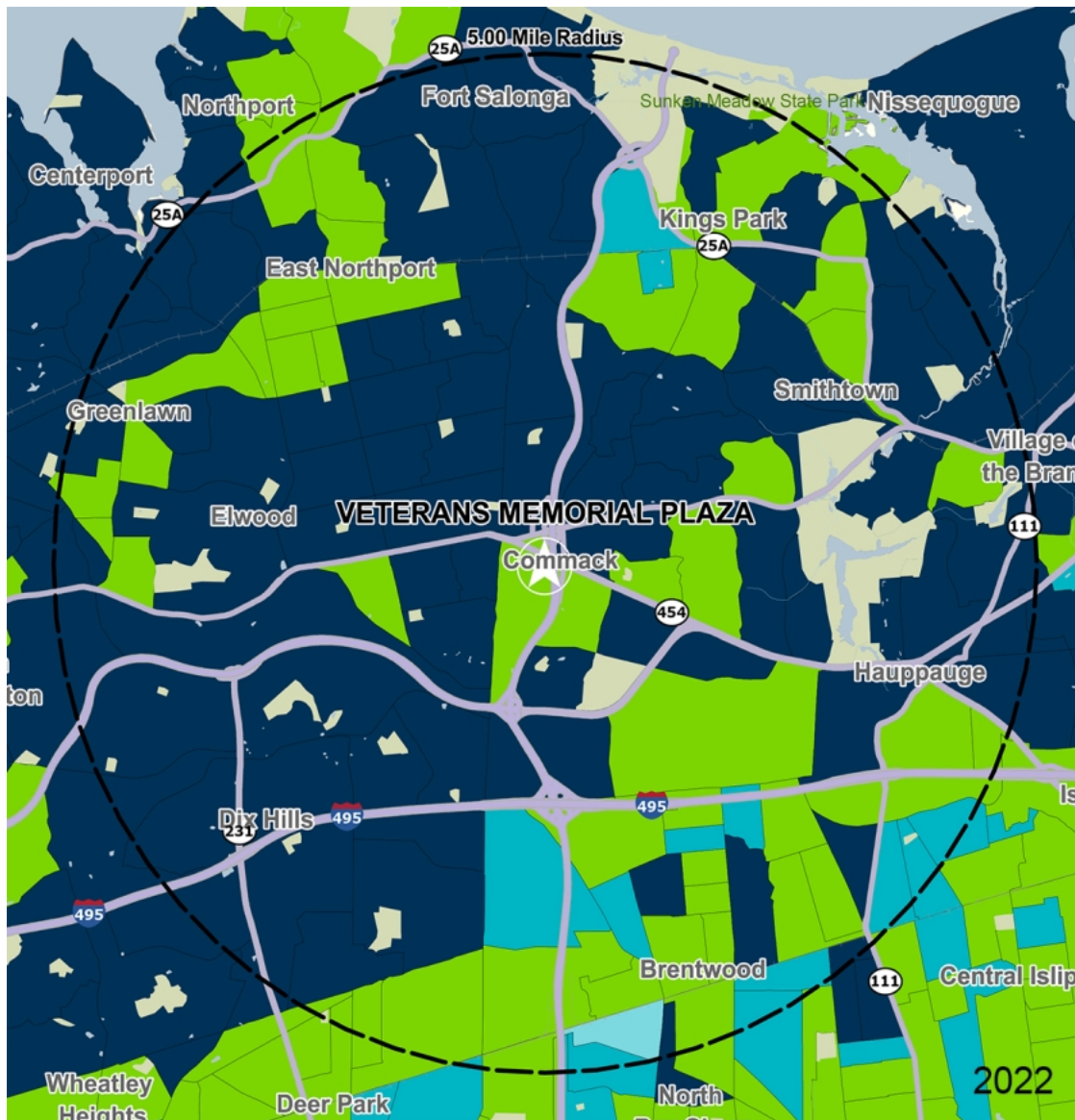


COMPETITION MAP

Tom Pira

Leasing Representative | (516) 869-2516 | tpira@kimcorealty.com





by Block Group

Demographics

| 2022 ESTIMATES | 1-MILE | 3-MILES | 5-MILES |
|-------------------|-----------|-----------|-----------|
| Population | 11,552 | 72,138 | 217,114 |
| Daytime Pop | 11,613 | 90,669 | 241,029 |
| Households | 3,976 | 23,300 | 67,300 |
| Average HH Income | \$171,137 | \$177,824 | \$164,305 |
| Median HH Income | \$140,638 | \$146,149 | \$133,359 |
| Per Capita Income | \$59,718 | \$57,946 | \$51,606 |

Average Household Income

Popstats, 4Q 2022, Trade Area Systems

- \$150K and up
- \$75K - \$100K
- \$100K - \$150K
- \$0K - \$50K



Veterans Memorial Plaza

Veterans Memorial Hwy. & Sunken Meadow State Pkwy., Commack, NY



Tom Pira
Leasing Representative
(516) 869-2516
tpira@kimcorealty.com