



# Novato Fair S.C.

Novato, CA

San Francisco-Oakland-Berkeley (CA)



**Brian Alt**  
Leasing Representative  
(916) 580-2533  
balt@kimcorealty.com

KRC Property Management I, Inc., a Subsidiary of Kimco Realty®  
CA License ID: 01504949 | CA KRC License ID: 01518685





As of 05/01/24

AERIAL



GROSS LEASABLE AREA (GLA)

133,485 SF

PARKING SPACES

523

Brian Alt

Leasing Representative | (916) 580-2533 | balt@kimcorealty.com



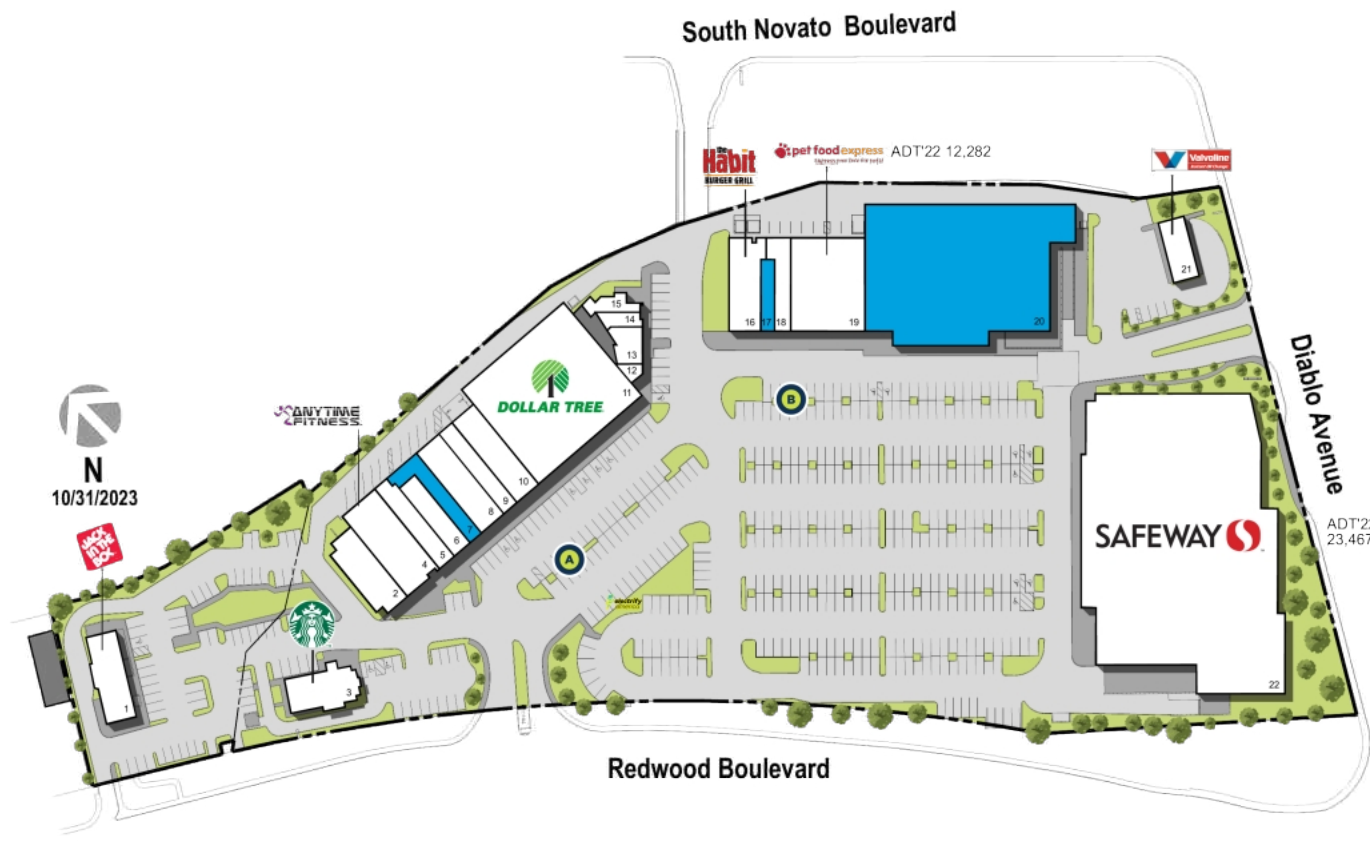
DENSITY AERIAL

Brian Alt

Leasing Representative | (916) 580-2533 | balt@kimcorealty.com



■ Available    ● Curbside Pick-up



	TENANT	SQ FT
1	JACK in the BOX	2,450
2	Pacific Dental	2,850
3	Starbucks Coffee	2,617
4	Anytime Fitness	4,200
5	Pearl	1,400
6	H&R Block	1,847
7	Available	2,113
8	T-Mobile	2,740
9	Yasumi Japanese Ramen	1,634
10	Discovery Stores	2,850
11	Dollar Tree	15,708
12	Gold Rush Jewelers	817
13	Postal Annex	1,210
14	Beauty Nails	774
15	Specialty Tobacco Outlet	770
16	The Habit Burger Grill	2,853
17	Available	1,080
18	Supercuts	1,340
19	Pet Food Express	6,678
20	Available	24,769
21	Valvoline Instant Oil Change	1,586
22	Safeway	51,199

Disclaimer: This site plan shows the approximate location, square footage, and configuration of the shopping center and adjacent areas, and is only illustrative of the size and relationship of the stores and common areas generally, all of which are subject to change. The showing of any names of tenants, parking spaces, square footage, curb-cuts or traffic controls shall not be deemed to be a representation or warranty that any tenants will be at the shopping center, the square footage is accurate, or that any parking spaces, curb-cuts or traffic controls do or will continue to exist. Moreover, any demographics set forth in this flyer are for illustrative purposes only and shall not be deemed a representation by Landlord or their accuracy. Availability of this property for rent is subject to prior rental or withdrawal of the property from the market at any time without notice.

**Brian Alt**

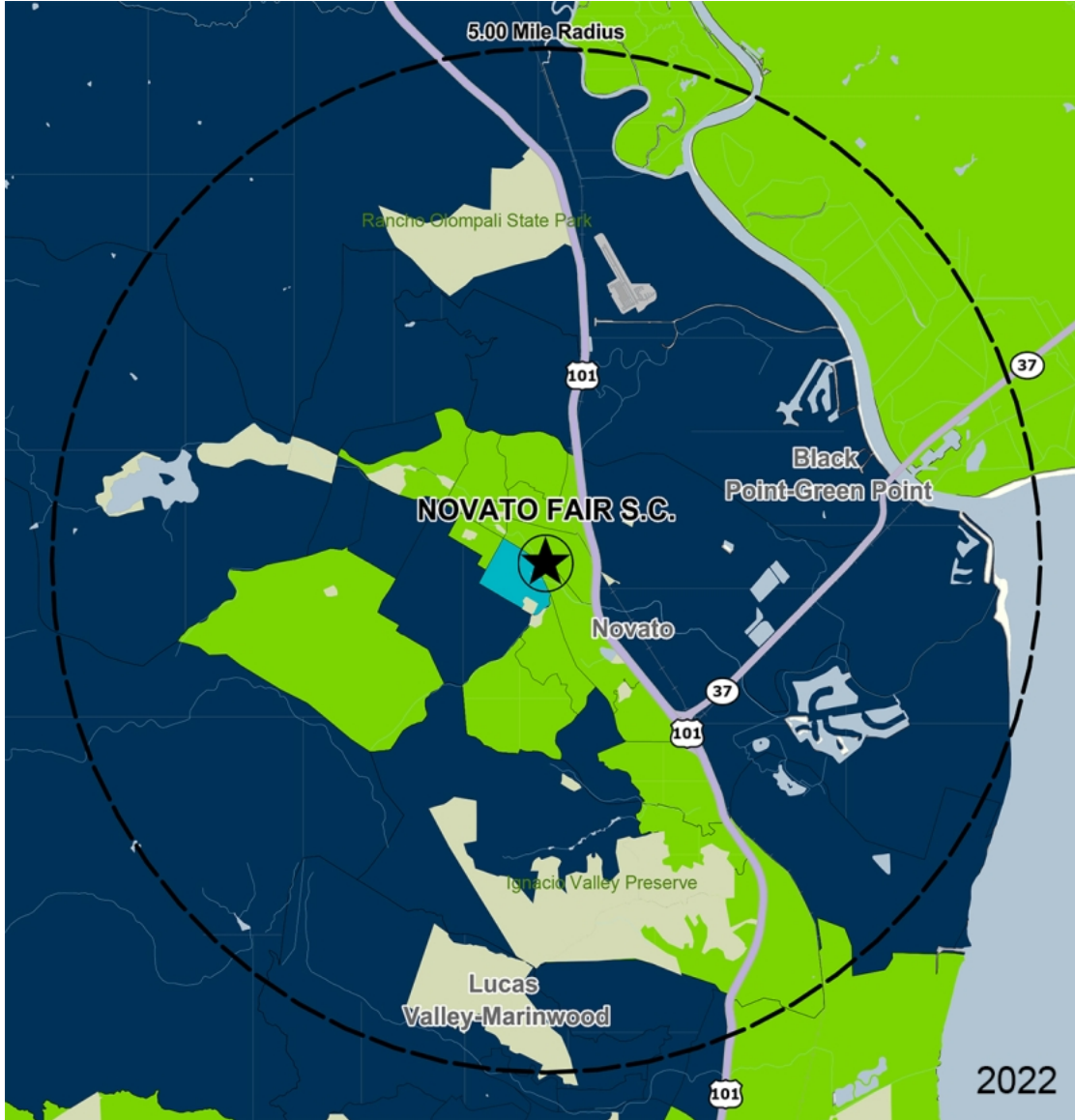
Leasing Representative | (916) 580-2533 | balt@kimcorealty.com



COMPETITION MAP

Brian Alt

Leasing Representative | (916) 580-2533 | balt@kimcorealty.com



by Block Group

## Demographics

2022 ESTIMATES	1-MILE	3-MILES	5-MILES
Population	14,806	46,171	61,967
Daytime Pop	19,529	45,762	59,466
Households	5,836	18,061	24,340
Average HH Income	\$131,212	\$155,093	\$157,795
Median HH Income	\$98,572	\$121,517	\$119,514
Per Capita Income	\$52,802	\$61,474	\$62,680

## Average Household Income

Popstats, 4Q 2022, Trade Area Systems

- \$150K and up
- \$100K - \$150K
- \$75K - \$100K
- \$50K - \$75K
- \$0K - \$50K



**Brian Alt**

Leasing Representative | (916) 580-2533 | balt@kimcorealty.com

# Novato Fair S.C.

Diablo Ave. & Redwood Blvd., Novato, CA



**Brian Alt**  
Leasing Representative  
(916) 580-2533  
balt@kimcorealty.com

KRC Property Management I, Inc., a Subsidiary of Kimco Realty®  
CA License ID: 01504949 | CA KRC License ID: 01518685