



# Redwood City Plaza

Redwood City, CA

San Francisco-Oakland-Berkeley (CA)



**Chrystelle Azcona**

Leasing Representative

(650) 746-7506

cazcona@kimcorealty.com

KRC Property Management I, Inc., a Subsidiary of Kimco Realty®  
CA Broker's ID: 01920629 | CA KRC License ID: 01518685





AERIAL



GROSS LEASABLE AREA (GLA) 45,870 SF

PARKING SPACES 366

PARKING RATIO 7.98 per 1,000 SF

Chrystelle Azcona

Leasing Representative | (650) 746-7506 | [cazcona@kimcorealty.com](mailto:cazcona@kimcorealty.com)



# Redwood City Plaza

Redwood City, CA

[www.kimcorealty.com/111460](http://www.kimcorealty.com/111460)



DENSITY AERIAL

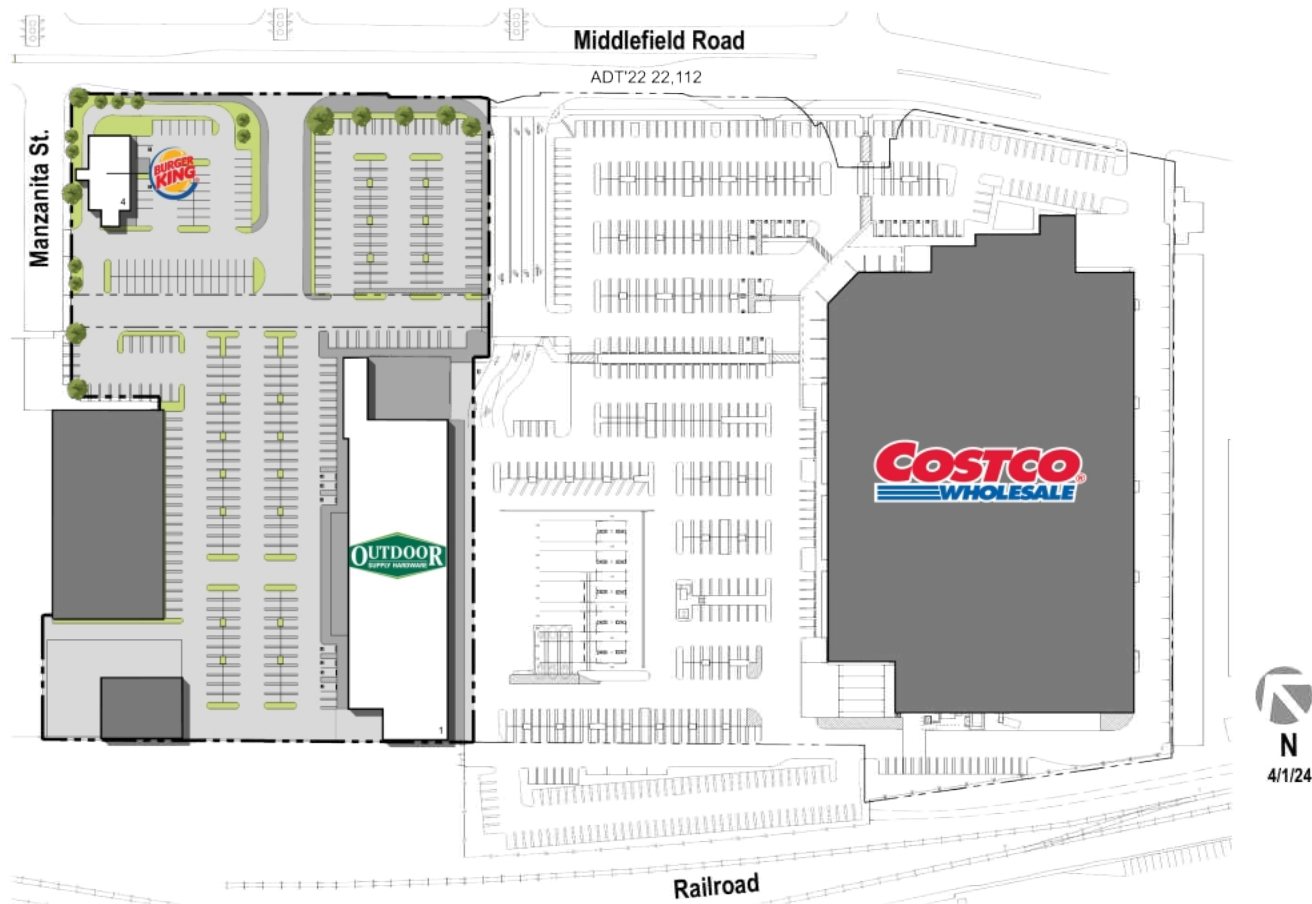
**Chrystelle Azcona**

Leasing Representative | (650) 746-7506 | [cazcona@kimcorealty.com](mailto:cazcona@kimcorealty.com)



■ Non-Controlled

	TENANT	SQ FT
1	Outdoor Supply Hardware	42,509
4	Burger King	3,361



Disclaimer: This site plan shows the approximate location, square footage, and configuration of the shopping center and adjacent areas, and is only illustrative of the size and relationship of the stores and common areas generally, all of which are subject to change. The showing of any names of tenants, parking spaces, square footage, curb-cuts or traffic controls shall not be deemed to be a representation or warranty that any tenants will be at the shopping center, the square footage is accurate, or that any parking spaces, curb-cuts or traffic controls do or will continue to exist. Moreover, any demographics set forth in this flyer are for illustrative purposes only and shall not be deemed a representation by Landlord or their accuracy. Availability of this property for rent is subject to prior rental or withdrawal of the property from the market at any time without notice.

**Chrystelle Azcona**

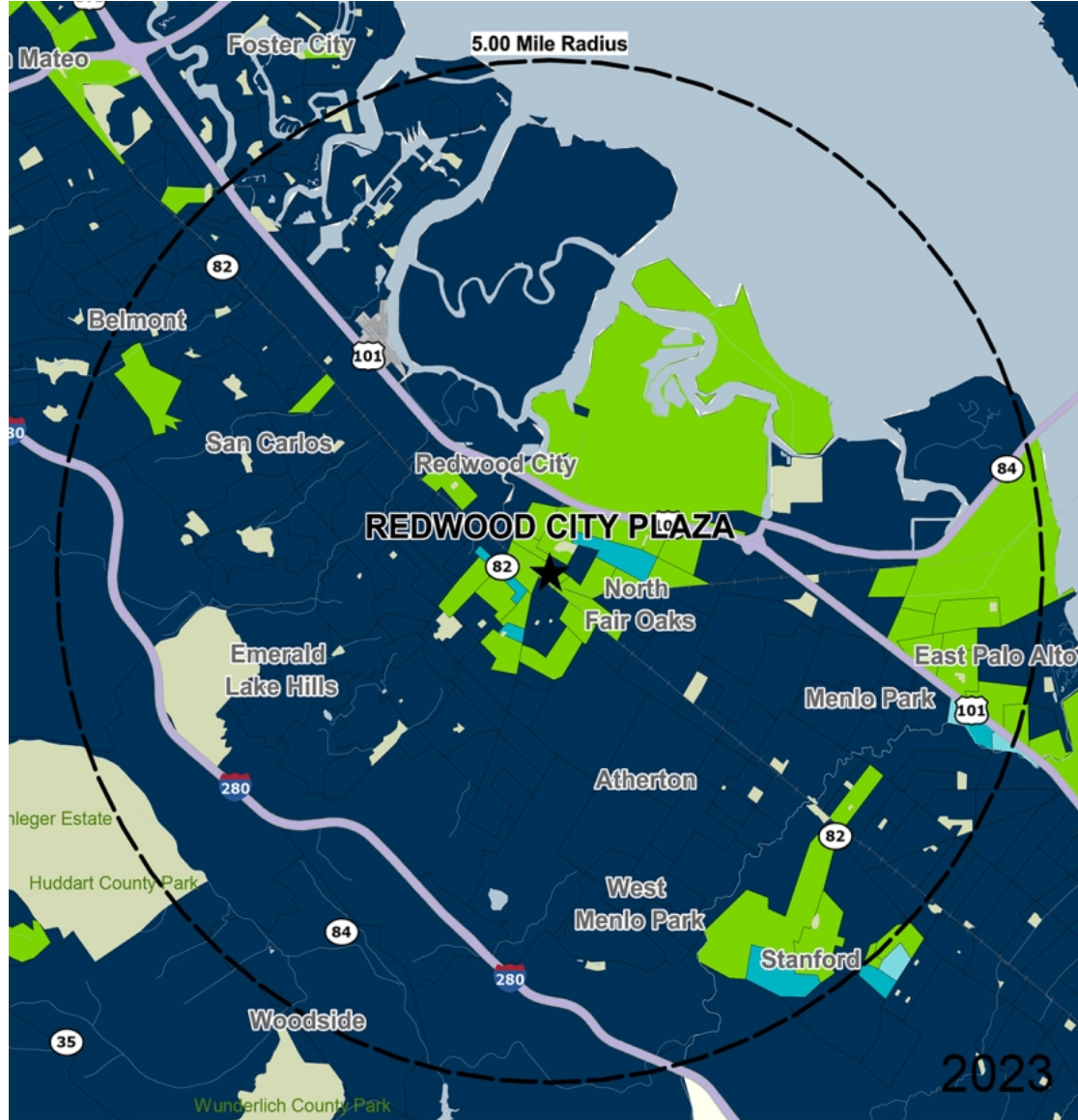
Leasing Representative | (650) 746-7506 | cazcona@kimcorealty.com



COMPETITION MAP

Chrystelle Azcona

Leasing Representative | (650) 746-7506 | cazcona@kimcorealty.com



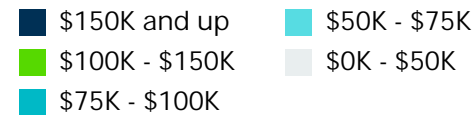
by Block Group

## Demographics

2022 ESTIMATES	1-MILE	3-MILES	5-MILES
Population	38,581	120,492	247,292
Daytime Pop	43,380	147,439	378,358
Households	11,877	42,884	89,170
Average HH Income	\$141,567	\$219,809	\$234,394
Median HH Income	\$93,841	\$144,644	\$153,730
Per Capita Income	\$45,568	\$79,973	\$86,179

## Average Household Income

Popstats, 4Q 2022, Trade Area Systems



Chrystelle Azcona

Leasing Representative | (650) 746-7506 | cazcona@kimcorealty.com

# Redwood City Plaza

Middlefield Rd. & Manzanita St., Redwood City, CA



**Chrystelle Azcona**

Leasing Representative

(650) 746-7506

cazcona@kimcorealty.com

KRC Property Management I, Inc., a Subsidiary of Kimco Realty®  
CA Broker's ID: 01920629 | CA KRC License ID: 01518685