



Curlew Crossing S.C.

Clearwater, FL

Tampa-St. Petersburg-Clearwater (FL)



Jordyn Mellow
Leasing Representative
(407) 501-8654
jmellow@kimcorealty.com





As of 03/05/25

AERIAL



GROSS LEASABLE AREA (GLA) 112,188 SF

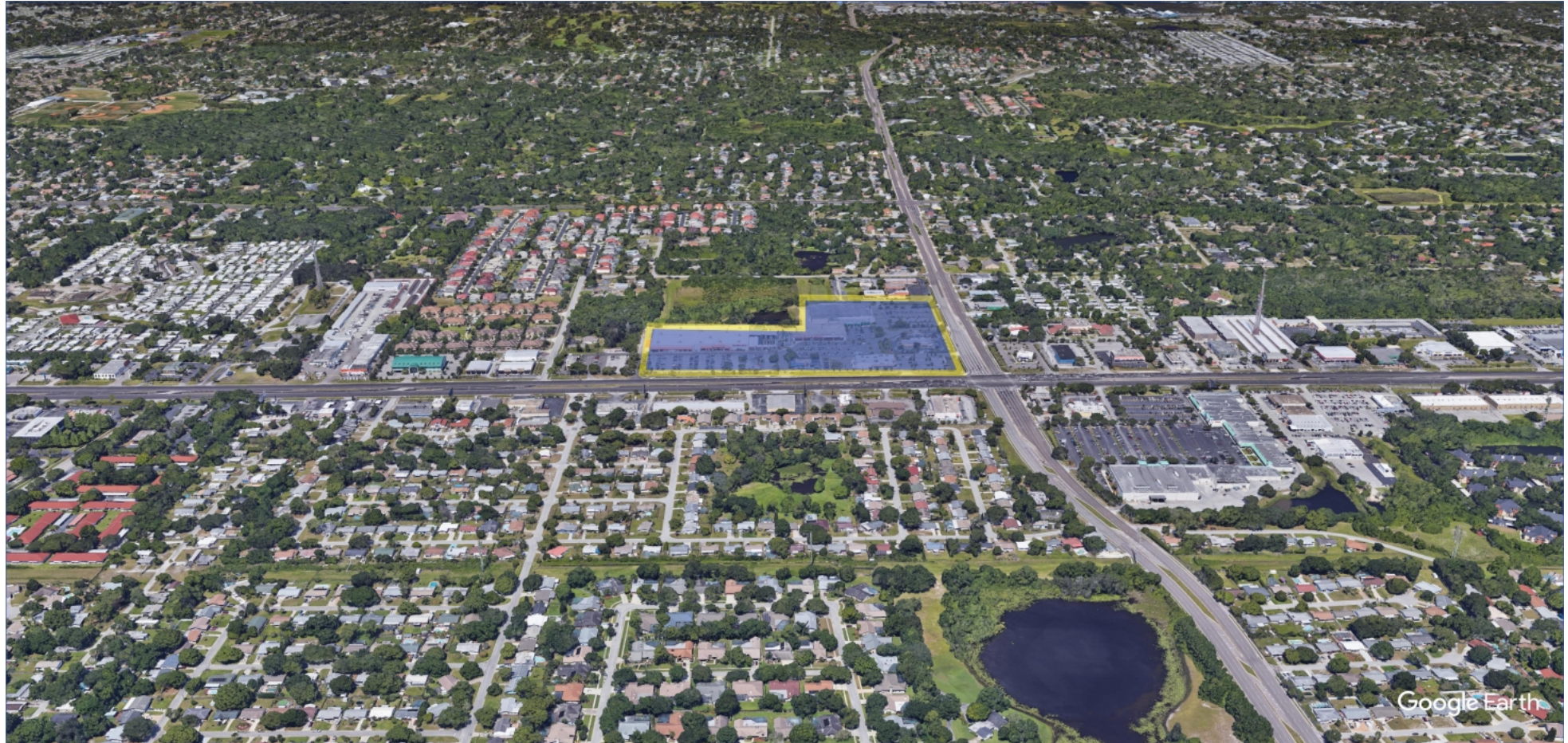
PARKING SPACES 931

PARKING RATIO 8.30 per 1,000 SF

Jordyn Mellow

Leasing Representative | (407) 501-8654 | jmellow@kimcorealty.com





DENSITY AERIAL



Property Overview

Curlew Crossing S.C. is a prime destination in the Clearwater market. The center fronts the busiest highway in Pinellas County and offers a dynamic tenant mix.

Jordyn Mellow

Leasing Representative | (407) 501-8654 | jmellow@kimcorealty.com

■ Available ■ Non-Controlled ● Curbside Pick-up

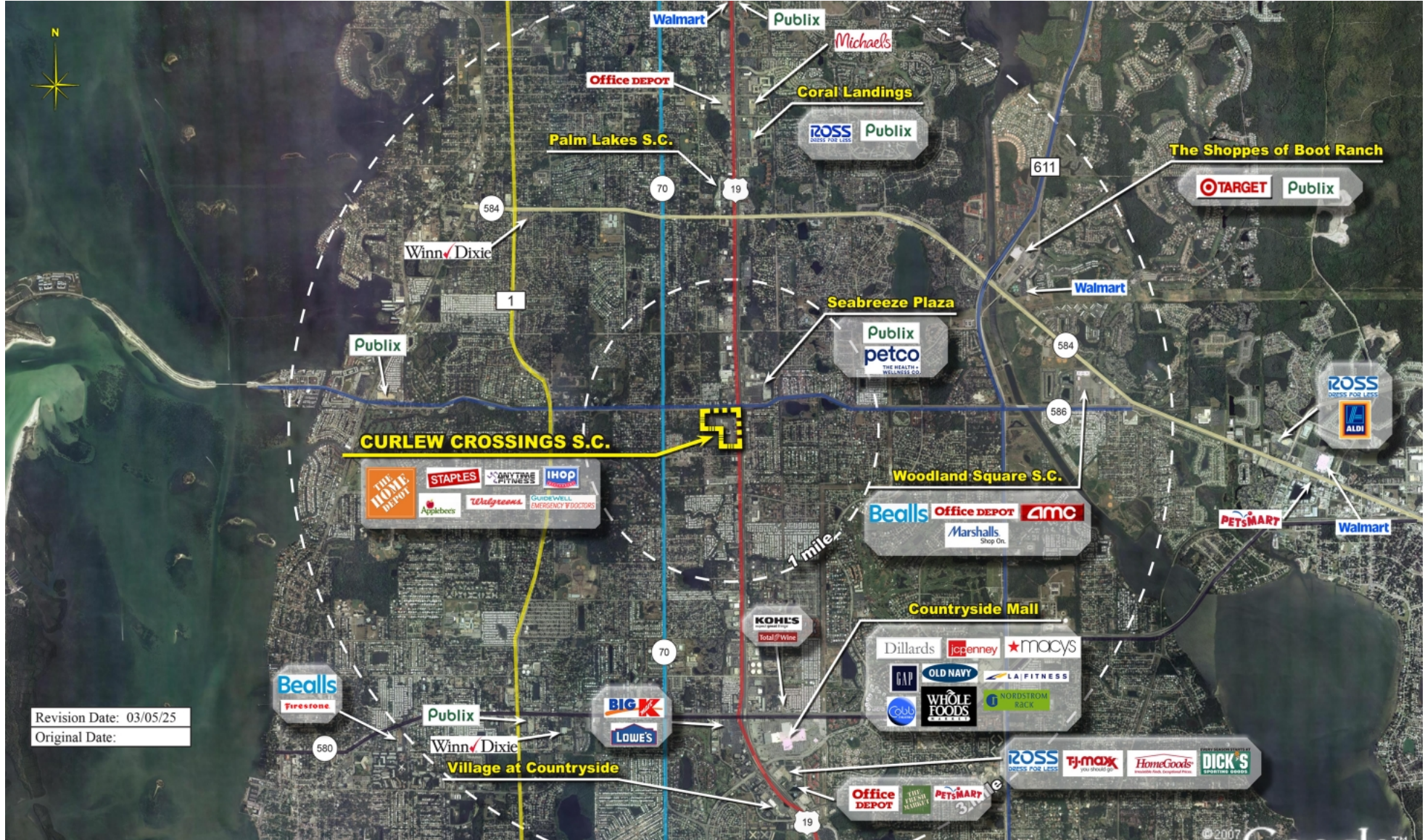


	TENANT	SQ FT
2	Staples	17,055
3	Anytime Fitness	5,233
4	Southern Steer Butcher	2,650
5	H&R Block	1,250
6	EOS Fitness	41,865
7	Available	2,104
8	Available	664
9	Available	1,251
10	Available	995
11	Rosies Alterations	602
12	Country Squire Barber Shop	527
13	Guidewell Emergency [...]	6,317
14	Walgreens	14,739
15	IHOP	4,336
16	Applebee's	4,600
K19	Management Office	814

Disclaimer: This site plan shows the approximate location, square footage, and configuration of the shopping center and adjacent areas, and is only illustrative of the size and relationship of the stores and common areas generally, all of which are subject to change. The showing of any names of tenants, parking spaces, square footage, curb-cuts or traffic controls shall not be deemed to be a representation or warranty that any tenants will be at the shopping center, the square footage is accurate, or that any parking spaces, curb-cuts or traffic controls do or will continue to exist. Moreover, any demographics set forth in this flyer are for illustrative purposes only and shall not be deemed a representation by Landlord or their accuracy. Availability of this property for rent is subject to prior rental or withdrawal of the property from the market at any time without notice.

Jordyn Mellow

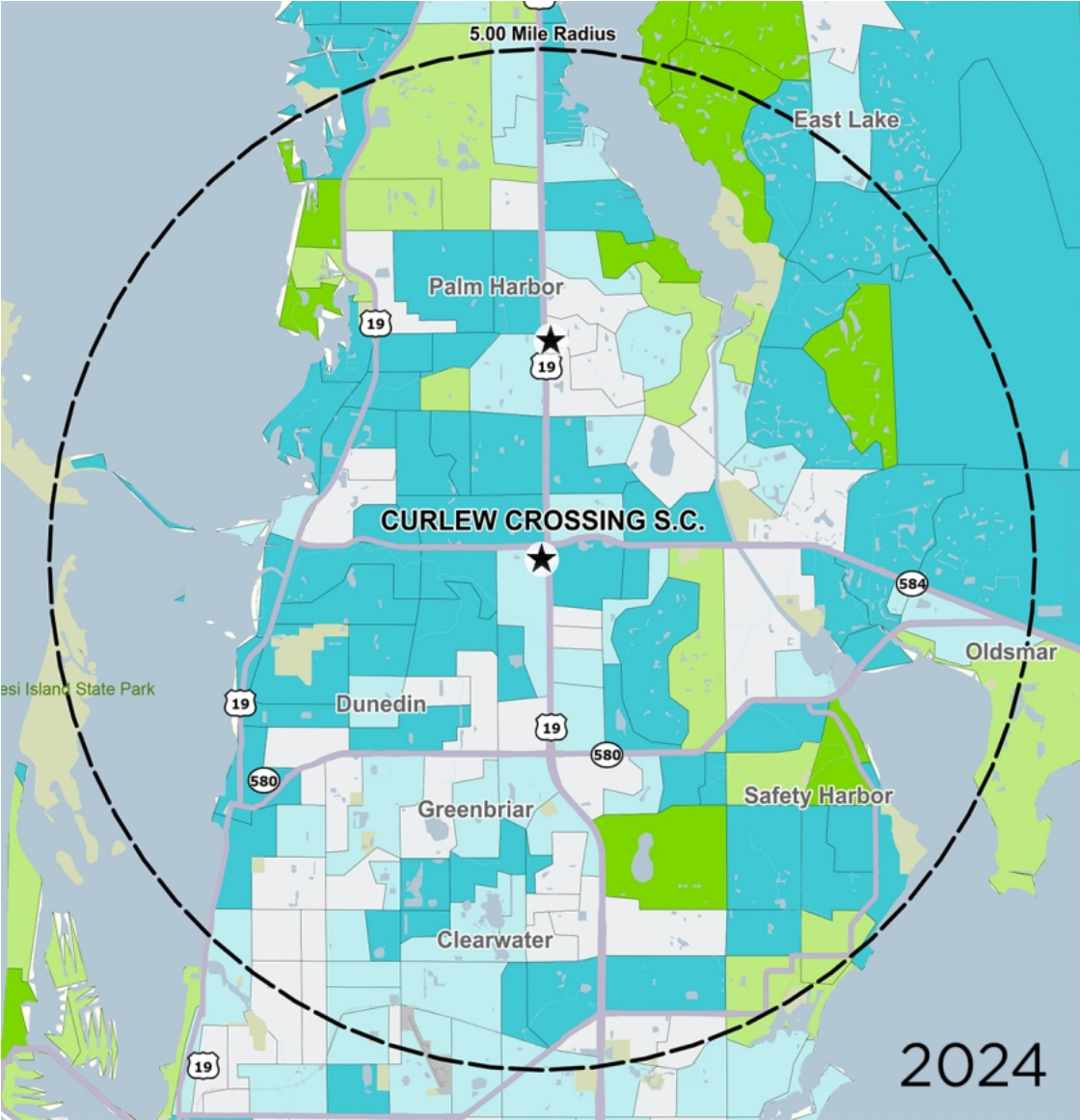
Leasing Representative | (407) 501-8654 | jmellow@kimcorealty.com



Revision Date: 03/05/25

Original Date:

COMPETITION MAP



by Block Group

Demographics

2024 ESTIMATES	1-MILE	3-MILES	5-MILES
Population	11,392	102,976	209,142
Daytime Pop	11,178	97,088	201,089
Households	5,036	48,701	96,319
Average HH Income	\$106,749	\$99,729	\$104,078
Median HH Income	\$83,444	\$74,049	\$75,334
Per Capita Income	\$47,517	\$47,610	\$48,422

Average Household Income

Popstats, 4Q 2024, Trade Area Systems



Jordyn Mellow

Leasing Representative | (407) 501-8654 | jmellow@kimcorealty.com

Curlew Crossing S.C.

US Hwy. 19 & Curlew Rd. (US Hwy. 19), Clearwater, FL



Jordyn Mellow

Leasing Representative

(407) 501-8654

jmellow@kimcorealty.com