



Fulton Market Place

Santa Rosa, CA

Santa Rosa-Petaluma (CA)



Brian Alt
Leasing Representative
(916) 580-2533
balt@kimcorealty.com

KRC Property Management I, Inc., a Subsidiary of Kimco Realty®
CA License ID: 01504949 | CA KRC License ID: 01518685





AERIAL



GROSS LEASABLE AREA (GLA)	102,478 SF
PARKING SPACES	119



DENSITY AERIAL

Brian Alt

Leasing Representative | (916) 580-2533 | balt@kimcorealty.com



Fulton Market Place

Santa Rosa, CA

www.kimcorealty.com/113240

■ Available ■ Non-Controlled ● Curbside Pick-up



	TENANT	SQ FT
2	Village Pets	1,600
3	May Garden Chinese Restaurant	1,448
4	Available	1,467
5	Great Clips	1,287
6	La Mexicana Ice Cream Shop	1,186
7	Available (Former Restaurant)	2,500
8	Hotworx	2,309
9	Jewelry Sales & Repair	900
10	Available	1,200
11	The UPS Store	1,200
12	Park Place Cleaners	1,600
13	Raley's	60,913
14	Available (Former Restaurant)	1,000
15	Available	984
16	Wingstop	1,560
17	Emma's Barber Shop	624
18	Red Nail Spa	1,259
19	ACE Hardware	12,100
20	Village Cafe	1,500
21	Launderland	1,621
25	Community First Credit Union	2,300
26	Available	1,920

Disclaimer: This site plan shows the approximate location, square footage, and configuration of the shopping center and adjacent areas, and is only illustrative of the size and relationship of the stores and common areas generally, all of which are subject to change. The showing of any names of tenants, parking spaces, square footage, curb-cuts or traffic controls shall not be deemed to be a representation or warranty that any tenants will be at the shopping center, the square footage is accurate, or that any parking spaces, curb-cuts or traffic controls do or will continue to exist. Moreover, any demographics set forth in this flyer are for illustrative purposes only and shall not be deemed a representation by Landlord or their accuracy. Availability of this property for rent is subject to prior rental or withdrawal of the property from the market at any time without notice.

Brian Alt

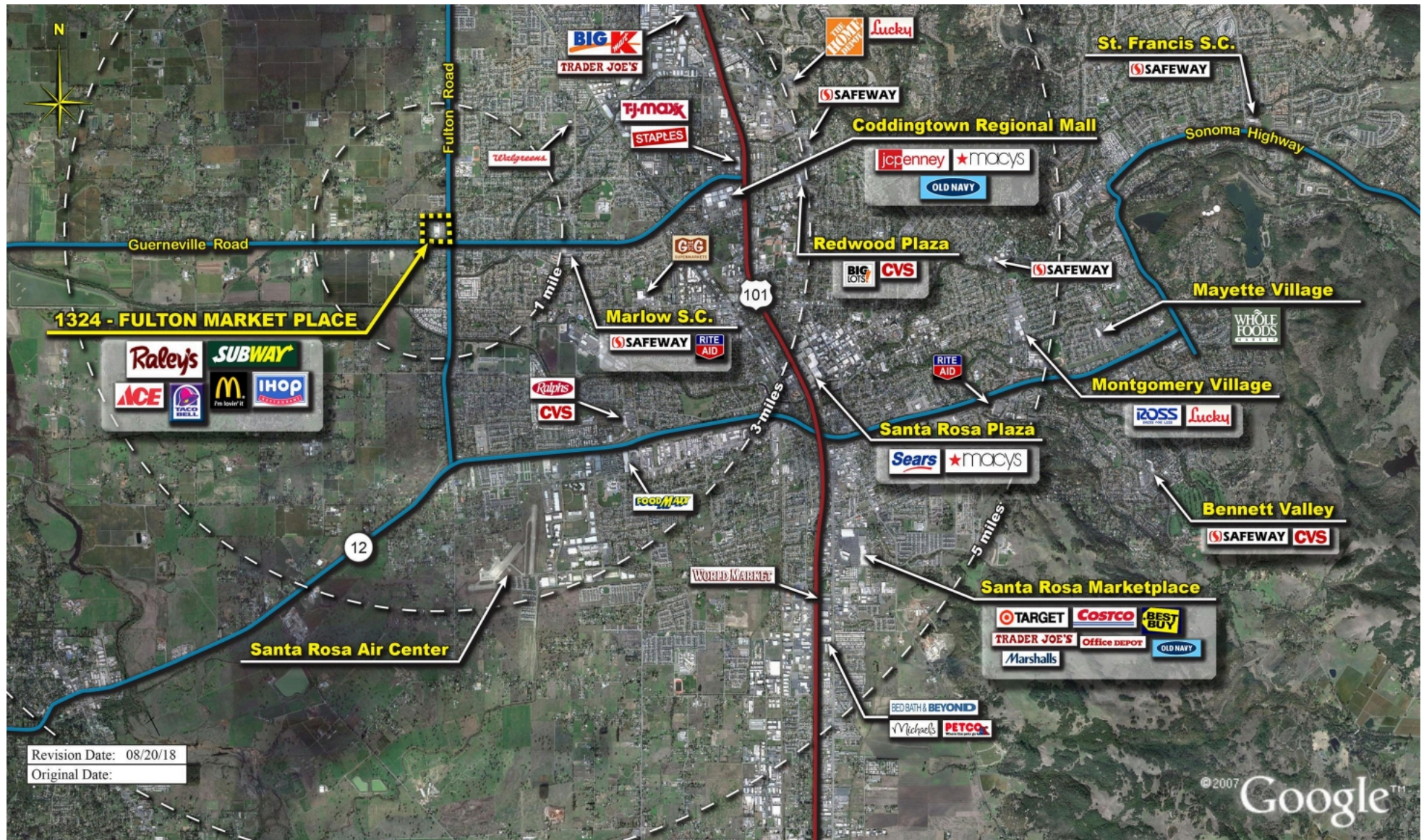
Leasing Representative | (916) 580-2533 | balt@kimcorealty.com



Fulton Market Place

Santa Rosa, CA

www.kimcorealty.com/113240



COMPETITION MAP

Brian Alt

Leasing Representative | (916) 580-2533 | balt@kimcorealty.com





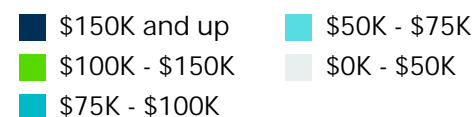
by Block Group

Demographics

2022 ESTIMATES	1-MILE	3-MILES	5-MILES
Population	9,421	79,423	161,342
Daytime Pop	6,561	124,122	209,210
Households	3,569	28,236	58,504
Average HH Income	\$121,914	\$104,181	\$107,314
Median HH Income	\$101,812	\$84,916	\$84,918
Per Capita Income	\$46,322	\$37,593	\$39,582

Average Household Income

Popstats, 4Q 2022, Trade Area Systems



Brian Alt

Leasing Representative | (916) 580-2533 | balt@kimcorealty.com

Fulton Market Place

Guerneville Hwy. & Fulton Rd., Santa Rosa, CA



Brian Alt

Leasing Representative

(916) 580-2533

balt@kimcorealty.com

KRC Property Management I, Inc., a Subsidiary of Kimco Realty®
CA License ID: 01504949 | CA KRC License ID: 01518685