



# Laband Village S.C.

Chino Hills, CA

Riverside-San Bernardino-Ontario (CA)



**Matt Magnaghi**

Leasing Representative

(949) 252-3874

[mmagnaghi@kimcorealty.com](mailto:mmagnaghi@kimcorealty.com)

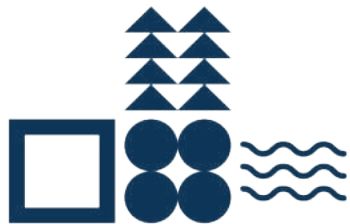
KRC Property Management I, Inc., a Subsidiary of Kimco Realty®  
CA Salesperson License ID: 02019850 | CA KRC License ID: 01518685





As of 03/18/24

AERIAL



GROSS LEASABLE AREA (GLA)

73,352 SF

PARKING SPACES

356

**Matt Magnaghi**

Leasing Representative | (949) 252-3874 | [mmagnaghi@kimcorealty.com](mailto:mmagnaghi@kimcorealty.com)



# Laband Village S.C.

Chino Hills, CA

[www.kimcorealty.com/113350](http://www.kimcorealty.com/113350)



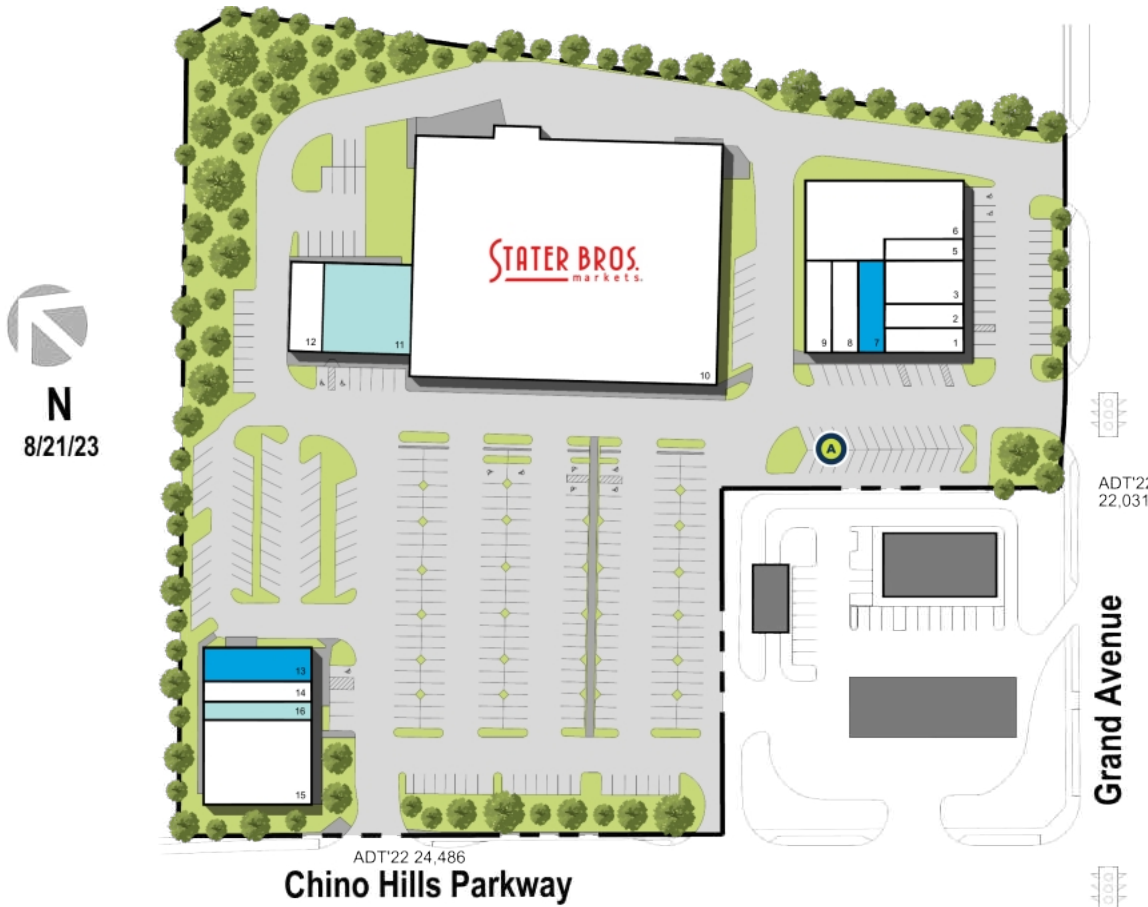
DENSITY AERIAL

**Matt Magnaghi**

Leasing Representative | (949) 252-3874 | [mmagnaghi@kimcorealty.com](mailto:mmagnaghi@kimcorealty.com)



■ Available 
 ■ Potentially Available 
 ⓐ Curbside Pick-up



	TENANT	SQ FT
1	Sport Clips	1,092
2	Nami Lash Art	1,092
3	Herbal Nail & Spa	1,943
5	Thai Corner	971
6	Punch It Up Fitness	6,213
7	Available	1,094
8	Soon Hee Ne Two Zone	1,215
9	300g Noodles	1,215
10	Stater Brothers	43,235
11	Whiz Kids Montessori School	4,240
12	The Pilates Crew	1,667
13	Available	1,764
14	Wow Dental	1,250
15	Top Scholar College Prep	5,128
16	Hair Story	1,233

Disclaimer: This site plan shows the approximate location, square footage, and configuration of the shopping center and adjacent areas, and is only illustrative of the size and relationship of the stores and common areas generally, all of which are subject to change. The showing of any names of tenants, parking spaces, square footage, curb-cuts or traffic controls shall not be deemed to be a representation or warranty that any tenants will be at the shopping center, the square footage is accurate, or that any parking spaces, curb-cuts or traffic controls do or will continue to exist. Moreover, any demographics set forth in this flyer are for illustrative purposes only and shall not be deemed a representation by Landlord or their accuracy. Availability of this property for rent is subject to prior rental or withdrawal of the property from the market at any time without notice.

**Matt Magnaghi**

Leasing Representative | (949) 252-3874 | mmagnaghi@kimcorealty.com



COMPETITION MAP

Matt Magnaghi

Leasing Representative | (949) 252-3874 | mmagnaghi@kimcorealty.com



by Block Group

## Demographics

2022 ESTIMATES	1-MILE	3-MILES	5-MILES
Population	11,484	82,850	261,592
Daytime Pop	7,889	72,018	257,302
Households	3,426	24,850	73,711
Average HH Income	\$154,666	\$127,058	\$108,769
Median HH Income	\$129,074	\$105,450	\$85,116
Per Capita Income	\$46,247	\$38,274	\$30,944

## Average Household Income

Popstats, 4Q 2022, Trade Area Systems

- \$150K and up
- \$100K - \$150K
- \$75K - \$100K
- \$50K - \$75K
- \$0K - \$50K



**Matt Magnaghi**

Leasing Representative | (949) 252-3874 | mmagnaghi@kimcorealty.com

# Laband Village S.C.

Chino Hills Pkwy. & Grand Ave., Chino Hills, CA



**Matt Magnaghi**

Leasing Representative

(949) 252-3874

[mmagnaghi@kimcorealty.com](mailto:mmagnaghi@kimcorealty.com)

KRC Property Management I, Inc., a Subsidiary of Kimco Realty®  
CA Salesperson License ID: 02019850 | CA KRC License ID: 01518685