



Sunset Valley Marketfair

Austin, TX

Austin-Round Rock-Georgetown (TX)



Douglas Schooley
Leasing Representative
(972) 638-5242
dschooley@kimcorealty.com





AERIAL



GROSS LEASABLE AREA (GLA)

213,352 SF

PARKING SPACES

373

Douglas Schooley

Leasing Representative | (972) 638-5242 | dschooley@kimcorealty.com





DENSITY AERIAL

Douglas Schooley

Leasing Representative | (972) 638-5242 | dschooley@kimcorealty.com

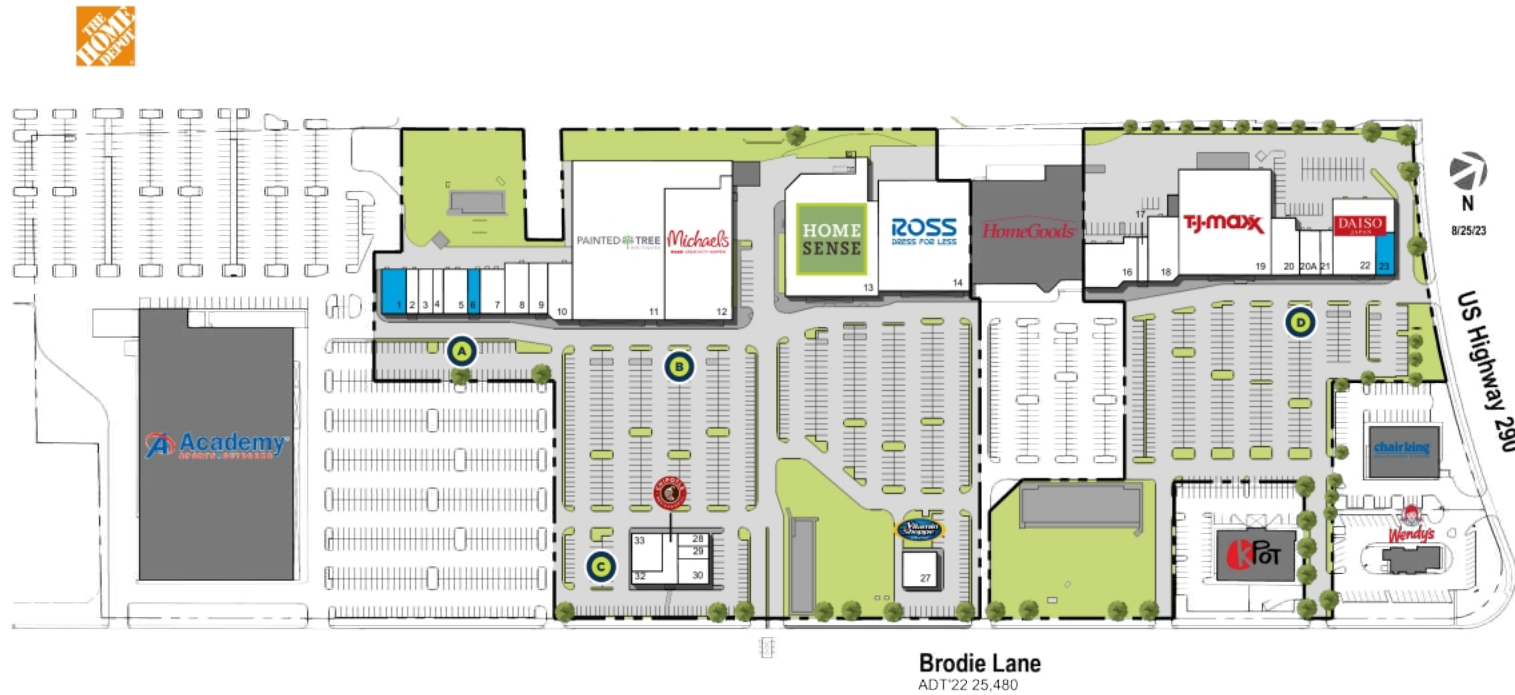


Sunset Valley Marketfair

Austin, TX

www.kimcorealty.com/113780

■ Available ■ Non-Controlled ● Curbside Pick-up



	TENANT	SQ FT
1	Available	2,764
2	Nothing Bundt Cakes	1,400
3	Texadelphia	1,610
4	Andino Artisan Gelato	1,190
5	Plato's Closet	2,800
6	Available	1,400
7	Sally Beauty Supply	2,800
8	Leslie's	4,500
9	Ideal Image	2,497
10	ATI Physical Therapy	2,142
11	Painted Tree Boutiques	42,098
12	Michaels	23,025
13	HomeSense	28,730
14	Ross Dress for Less	26,250
16	Visionworks	6,123
17	Austin Haircut Co.	1,200
18	5.11 Tactical	5,000
19	TJ Maxx	25,050
20	Spectrum	4,000
20A	Le Posh Nails & Spa	2,400
21	Bogie's Donuts	1,400
22	Daiso	10,000
23	Available	2,000
27	Vitamin Shoppe	2,998
28	Edward Jones	1,000
29	Cookie Cutters Hair Cuts for K	1,000
30	Red Wing Shoes	1,975
32	Chipotle Mexican Grill	3,000
33	Bluefin Sushi & Ramen	3,000

Disclaimer: This site plan shows the approximate location, square footage, and configuration of the shopping center and adjacent areas, and is only illustrative of the size and relationship of the stores and common areas generally, all of which are subject to change. The showing of any names of tenants, parking spaces, square footage, curbside or traffic controls shall not be deemed to be a representation or warranty that any tenants will be at the shopping center, the square footage is accurate, or that any parking spaces, curbside or traffic controls do or will continue to exist. Moreover, any demographics set forth in this flyer are for illustrative purposes only and shall not be deemed a representation by Landlord or their accuracy. Availability of this property for rent is subject to prior rental or withdrawal of the property from the market at any time without notice.

Douglas Schooley

Leasing Representative | (972) 638-5242 | dschooley@kimcorealty.com



Sunset Valley Marketfair

Austin, TX

www.kimcorealty.com/113780

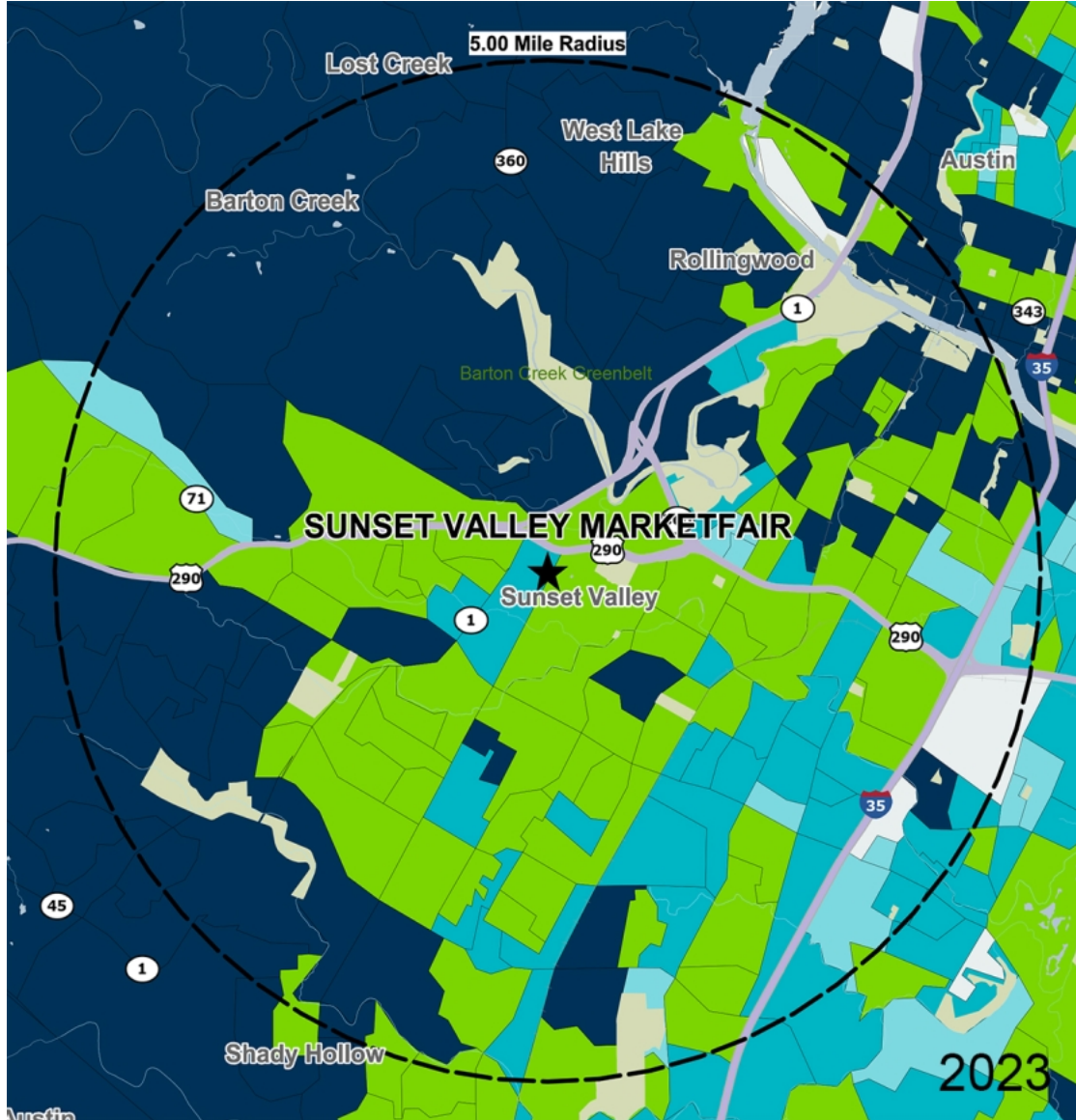


COMPETITION MAP

Douglas Schooley

Leasing Representative | (972) 638-5242 | dschooley@kimcorealty.com





by Block Group

Demographics

2022 ESTIMATES	1-MILE	3-MILES	5-MILES
Population	5,152	94,481	266,768
Daytime Pop	10,855	92,854	307,683
Households	2,752	43,328	116,218
Average HH Income	\$116,606	\$115,680	\$125,385
Median HH Income	\$87,477	\$88,996	\$89,038
Per Capita Income	\$62,618	\$53,338	\$54,960

Average Household Income

Popstats, 4Q 2022, Trade Area Systems

- \$150K and up
- \$100K - \$150K
- \$75K - \$100K
- \$50K - \$75K
- \$0K - \$50K



Sunset Valley Marketfair

Rte. 1 & Rte. 290, Austin, TX



Douglas Schooley
Leasing Representative
(972) 638-5242
dschooley@kimcorealty.com