



Shops at Santa Barbara

Cape Coral, FL

Cape Coral-Fort Myers (FL)



Susana Hernandez-Hazzi
Leasing Representative
(954) 956-2116
shazzi@kimcorealty.com





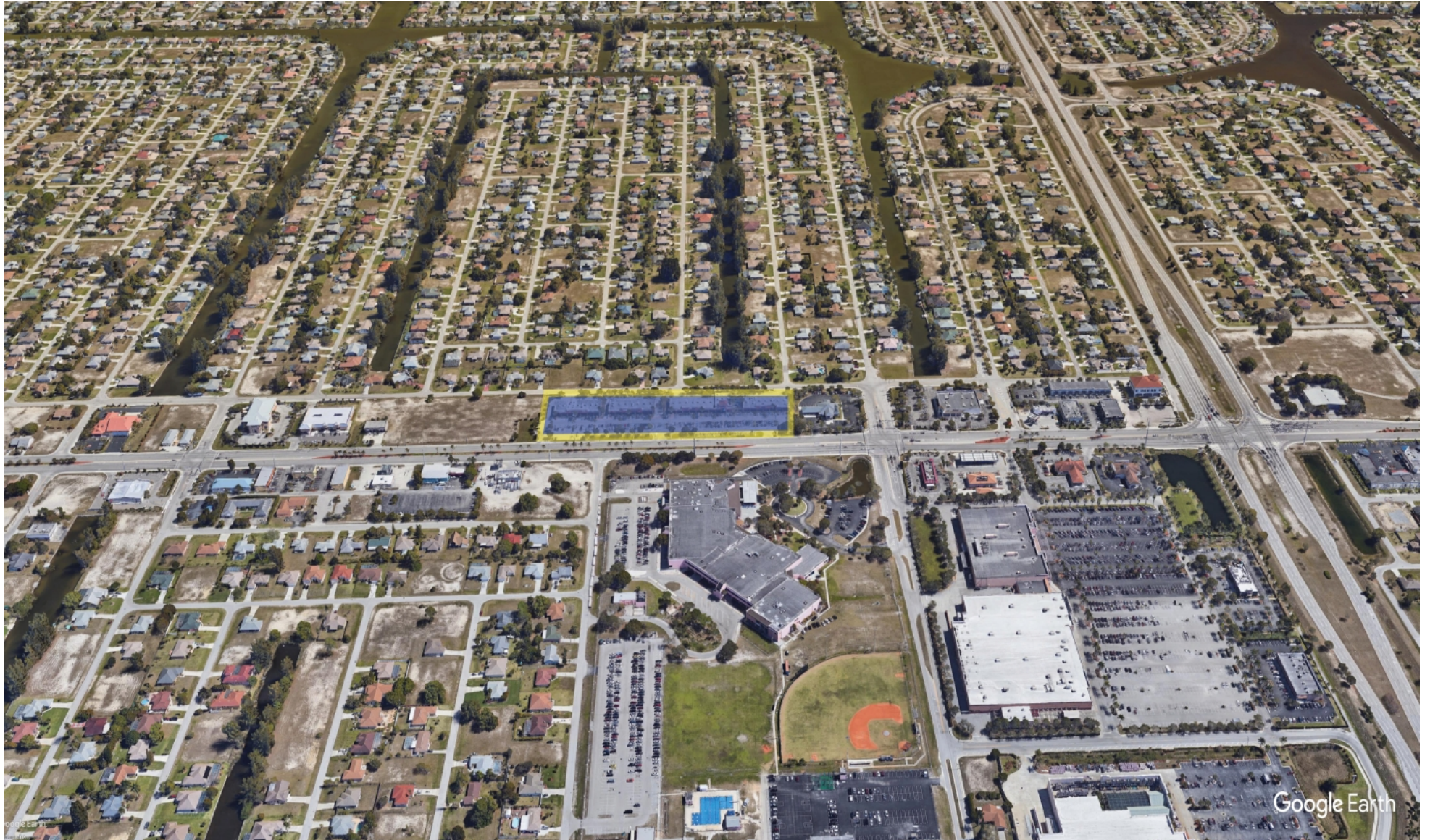
AERIAL



| | |
|---------------------------|-------------------|
| GROSS LEASABLE AREA (GLA) | 42,030 SF |
| PARKING SPACES | 281 |
| PARKING RATIO | 6.69 per 1,000 SF |

Susana Hernandez-Hazzi

Leasing Representative | (954) 956-2116 | shazzi@kimcorealty.com



Google Earth

DENSITY AERIAL

Susana Hernandez-Hazzi

Leasing Representative | (954) 956-2116 | shazzi@kimcorealty.com

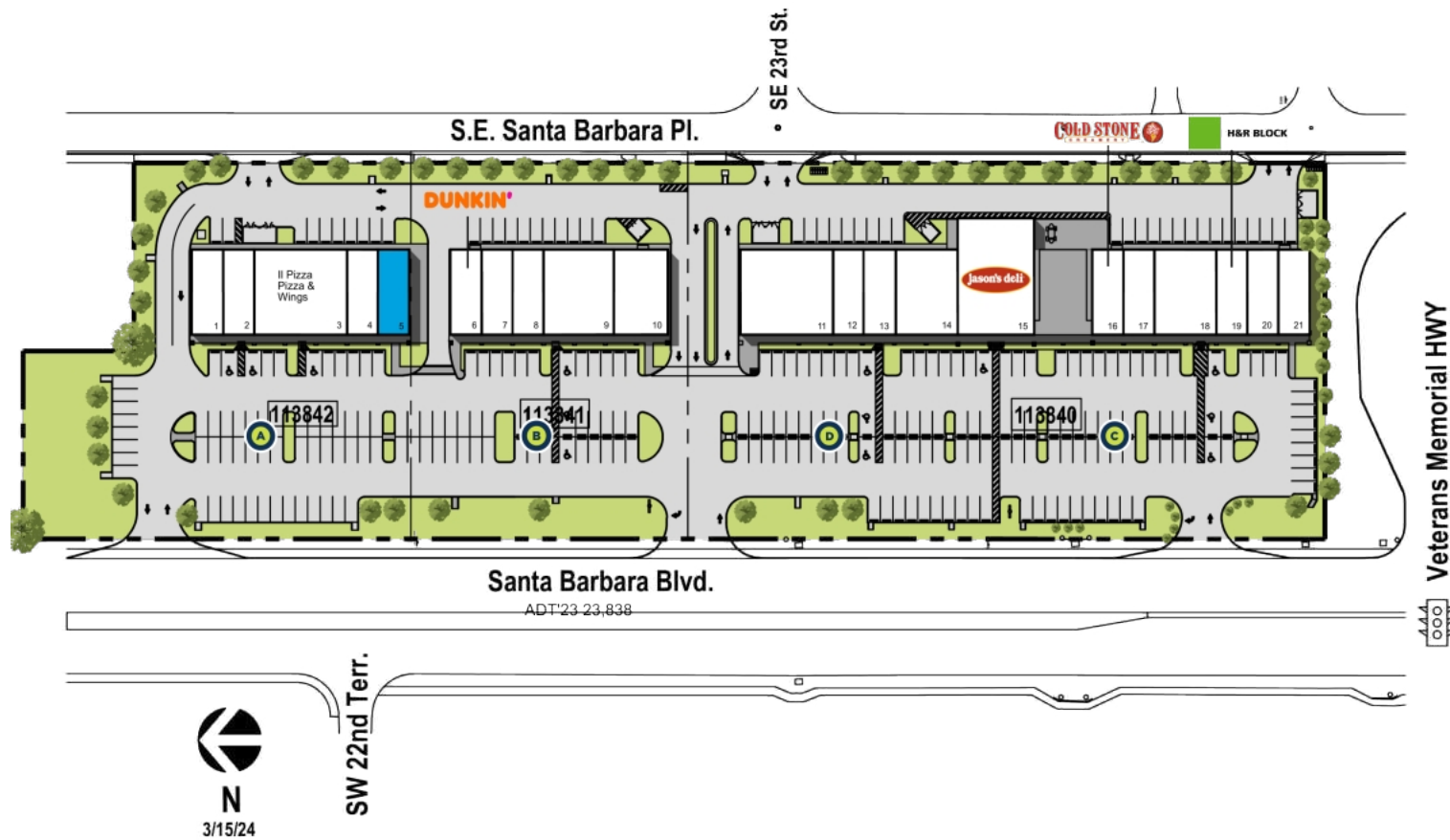


Shops at Santa Barbara

Cape Coral, FL

www.kimcorealty.com/113840

■ Available ● Curbside Pick-up



| | TENANT | SQ FT |
|----|-------------------------------|-------|
| 1 | Jeremiahs Italian Ice | 1,340 |
| 2 | US Hearing Solutions | 1,340 |
| 3 | Il Primo Pizza & Wings | 4,020 |
| 4 | Mathnasium of Cape Coral | 1,340 |
| 5 | Available (Former Restaurant) | 1,340 |
| 6 | Dunkin' Donuts | 1,340 |
| 7 | Luminous Studio | 1,340 |
| 8 | Asurion Tech Repair & [...] | 1,340 |
| 9 | Massage Envy | 2,980 |
| 10 | Southwest Florida Eye Care | 2,380 |
| 11 | Pet People | 4,020 |
| 12 | Total Nutrition | 1,340 |
| 13 | Fantastic Sams | 1,340 |
| 14 | Orangetheory Fitness | 2,680 |
| 15 | Jason's Deli | 4,510 |
| 16 | Cold Stone Creamery | 1,340 |
| 17 | Pizza Hut | 1,340 |
| 18 | My Home Kinect Leasing | 2,680 |
| 19 | H&R Block | 1,340 |
| 20 | The Joint Chiropractic | 1,340 |
| 21 | Taco Pancho | 1,340 |

Disclaimer: This site plan shows the approximate location, square footage, and configuration of the shopping center and adjacent areas, and is only illustrative of the size and relationship of the stores and common areas generally, all of which are subject to change. The showing of any names of tenants, parking spaces, square footage, curb-cuts or traffic controls shall not be deemed to be a representation or warranty that any tenants will be at the shopping center, the square footage is accurate, or that any parking spaces, curb-cuts or traffic controls do or will continue to exist. Moreover, any demographics set forth in this flyer are for illustrative purposes only and shall not be deemed a representation by Landlord or their accuracy. Availability of this property for rent is subject to prior rental or withdrawal of the property from the market at any time without notice.

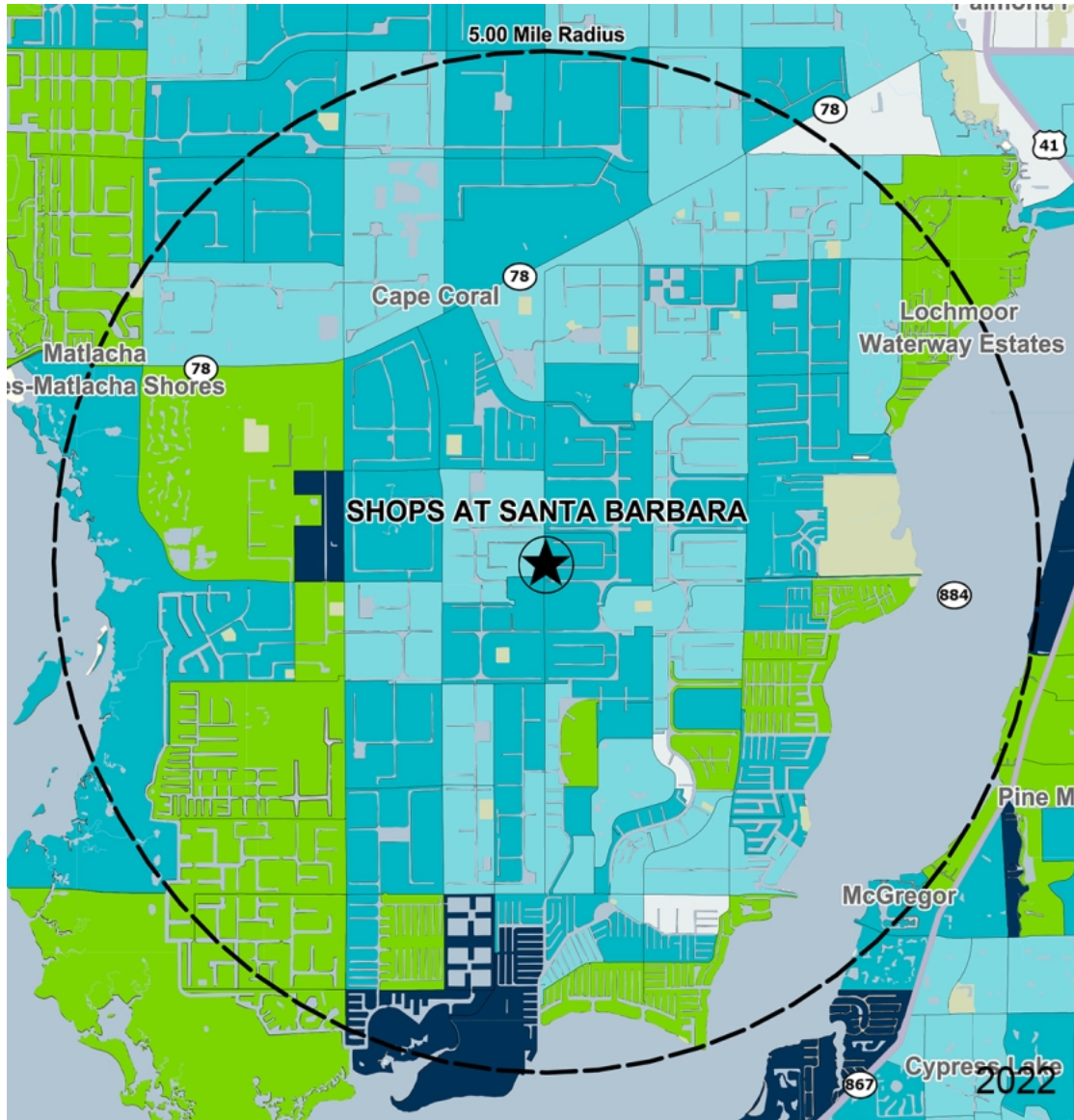
Susana Hernandez-Hazzi

Leasing Representative | (954) 956-2116 | shazzi@kimcorealty.com





COMPETITION MAP



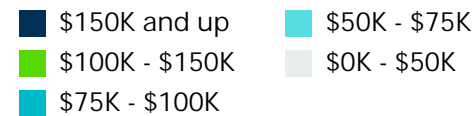
by Block Group

Demographics

| 2022 ESTIMATES | 1-MILE | 3-MILES | 5-MILES |
|-------------------|----------|----------|----------|
| Population | 9,886 | 85,915 | 173,050 |
| Daytime Pop | 8,738 | 64,441 | 138,113 |
| Households | 3,711 | 33,945 | 69,178 |
| Average HH Income | \$77,201 | \$81,233 | \$85,423 |
| Median HH Income | \$65,960 | \$64,095 | \$65,834 |
| Per Capita Income | \$29,097 | \$32,205 | \$34,227 |

Average Household Income

Popstats, 4Q 2022, Trade Area Systems



Shops at Santa Barbara

Santa Barbara Blvd. & Veterans Memorial Pkwy., Cape Coral, FL



Susana Hernandez-Hazzi
Leasing Representative
(954) 956-2116
shazzi@kimcorealty.com