



Marina Village

Huntington Beach, CA

Los Angeles-Long Beach-Anaheim (CA)



Todd Buckstein

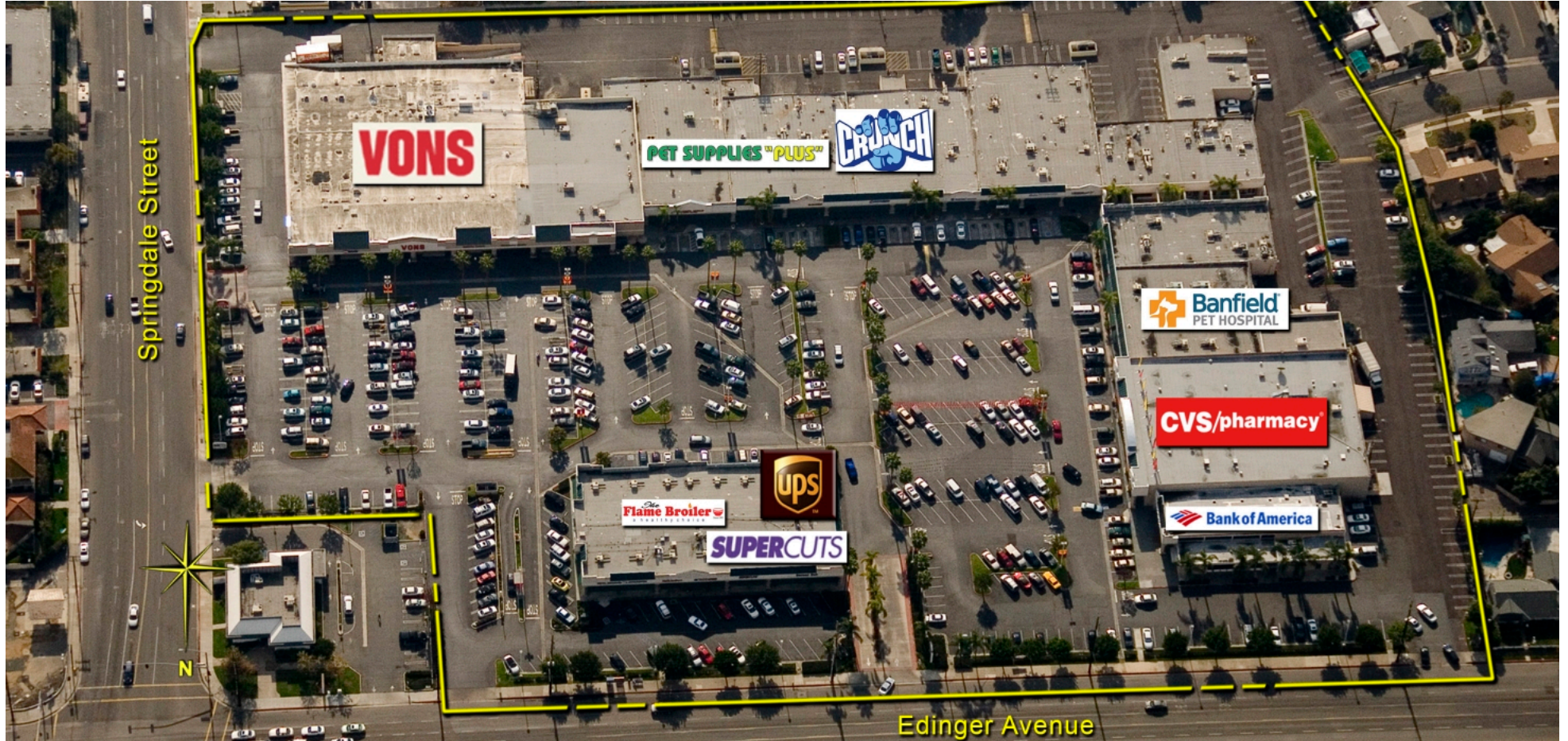
Leasing Representative

(949) 252-3852

tbuckstein@kimcorealty.com

KRC Property Management I, Inc., a Subsidiary of Kimco Realty®
CA License ID: 01880837 | CA KRC License ID: 01518685





AERIAL



GROSS LEASABLE AREA (GLA)

148,805 SF

PARKING SPACES

700

Todd Buckstein

Leasing Representative | (949) 252-3852 | tbuckstein@kimcorealty.com



DENSITY AERIAL

Todd Buckstein

Leasing Representative | (949) 252-3852 | tbuckstein@kimcorealty.com



■ Available ■ Potentially Available ● Curbside Pick-up



ADT'22
14,266

ADT'22 18,102
Edinger Avenue

	TENANT	SQ FT
1	Flame Broiler	900
2	Jimmy Johns Gourmet Sandwiches	1,350
3	Supercuts	1,350
4	Available (Former Restaurant)	2,250
5	Edindale Cleaners	877
6	Surf City Nails	1,350
7	Edward's Hair Salon	900
8	Marina Smoke Shop	900
9	CaliTea	900
10	The UPS Store	1,225
11	Bank of America	7,200
12	CVS	20,120
13	Pro Beauty Center	4,265
14	JT's Bagels	1,985
15	Banfield Pet Hospital	2,500
16	Alki Pi Water	1,000
17	Berkshire Hathaway HomeServices	3,300
18	Green Day Spa	629
19	Brows & Lashes by Angel	1,014
20	AYCE Sushi	2,640
21	Premier Youth Sports	5,131
22	Marlin Bar & Grill	3,300
23	Goodwill Industries	7,283
24	Xpress Urgent Care	3,826
25	Huntington Beach Optometry	3,120
26	Crunch Huntington Beach	16,609
27	Pet Supplies Plus	7,870
28	Vons	40,800
29	Bank of America	36
30	Shalini Shah DDS & Associates	4,175

Disclaimer: This site plan shows the approximate location, square footage, and configuration of the shopping center and adjacent areas, and is only illustrative of the size and relationship of the stores and common areas generally, all of which are subject to change. The showing of any names of tenants, parking spaces, square footage, curb-cuts or traffic controls shall not be deemed to be a representation or warranty that any tenants will be at the shopping center, the square footage is accurate, or that any parking spaces, curb-cuts or traffic controls do or will continue to exist. Moreover, any demographics set forth in this flyer are for illustrative purposes only and shall not be deemed a representation by Landlord or their accuracy. Availability of this property for rent is subject to prior rental or withdrawal of the property from the market at any time without notice.

Todd Buckstein

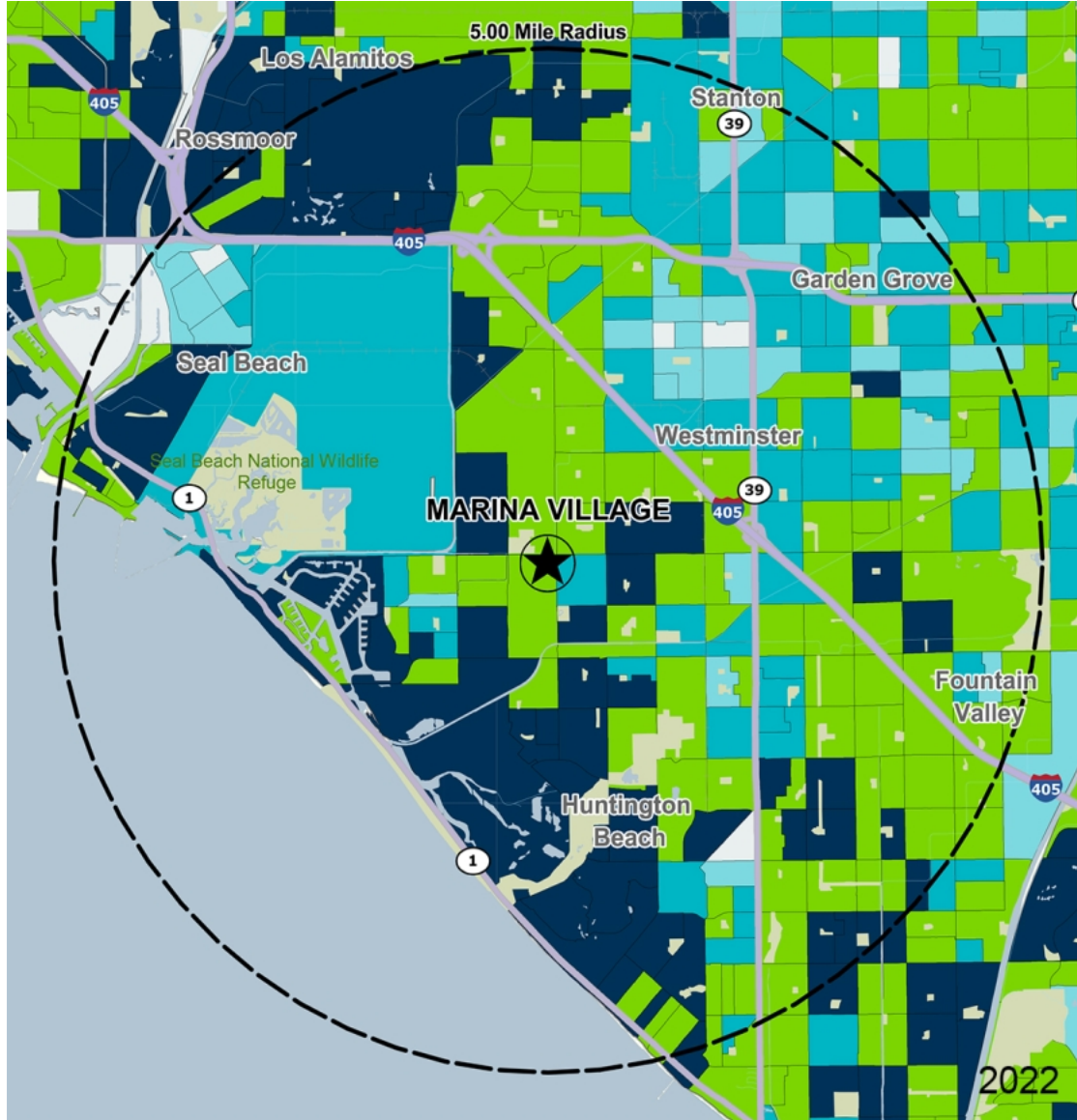
Leasing Representative | (949) 252-3852 | tbuckstein@kimcorealty.com





Revision Date: 09/26/23
Original Date:

COMPETITION MAP



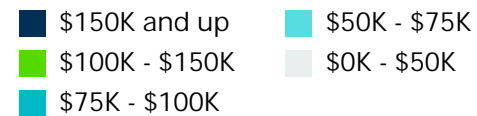
by Block Group

Demographics

2022 ESTIMATES	1-MILE	3-MILES	5-MILES
Population	18,996	157,453	408,945
Daytime Pop	23,741	166,057	390,566
Households	6,870	54,933	141,531
Average HH Income	\$135,659	\$126,266	\$122,545
Median HH Income	\$111,852	\$95,243	\$91,650
Per Capita Income	\$49,174	\$44,177	\$42,636

Average Household Income

Popstats, 4Q 2022, Trade Area Systems



Todd Buckstein

Leasing Representative | (949) 252-3852 | tbuckstein@kimcorealty.com

Marina Village

Edinger Ave. & Springdale St., Huntington Beach, CA



Todd Buckstein

Leasing Representative

(949) 252-3852

tbuckstein@kimcorealty.com

KRC Property Management I, Inc., a Subsidiary of Kimco Realty®
CA License ID: 01880837 | CA KRC License ID: 01518685