



Riverplace S.C.

Jacksonville, FL
Jacksonville (FL)



Edmee Morin
Leasing Representative
(248) 592-6308
emorin@kimcorealty.com





As of 02/07/24

AERIAL



GROSS LEASABLE AREA (GLA)	257,566 SF
PARKING SPACES	1,399
PARKING RATIO	5.43 per 1,000 SF

Edmee Morin

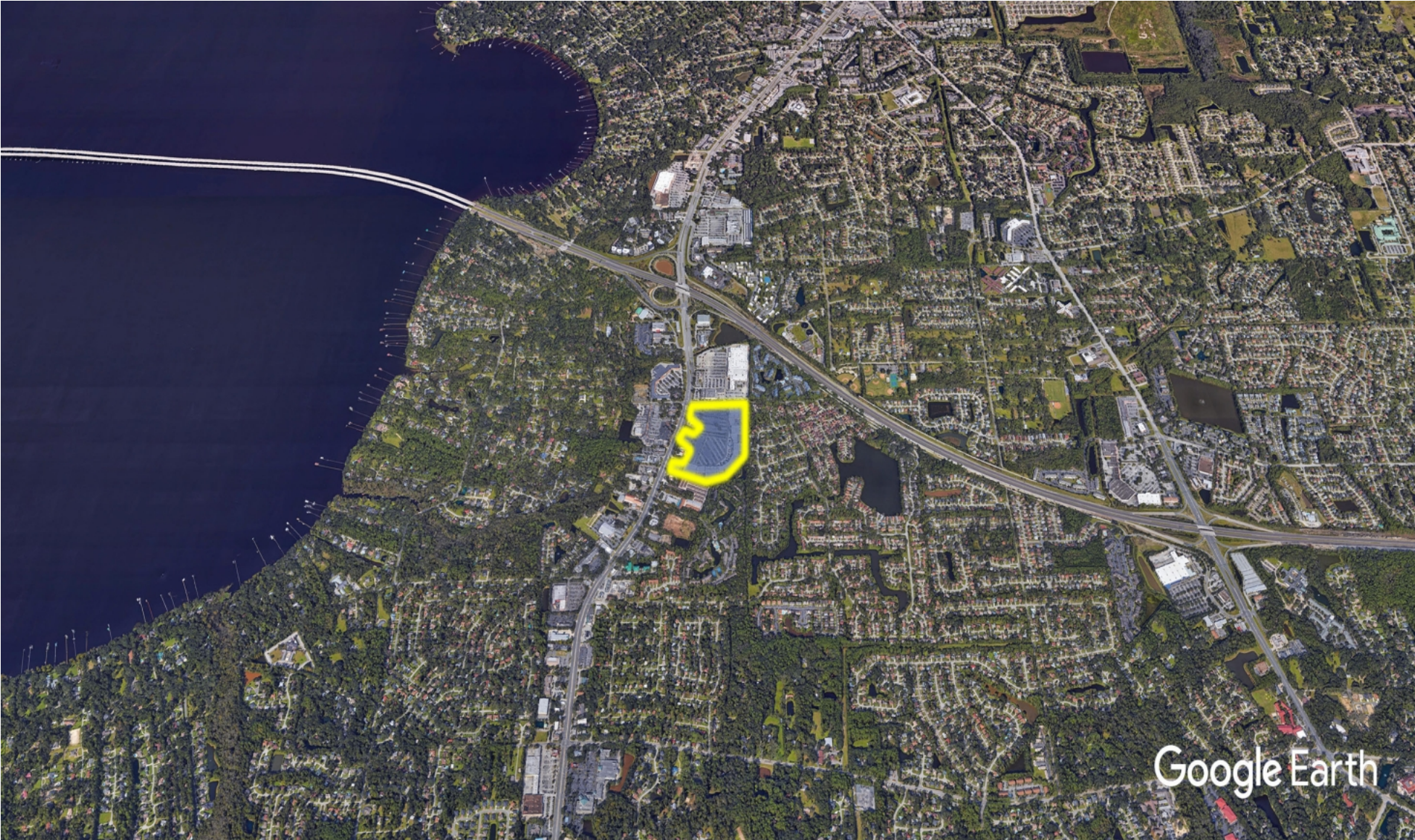
Leasing Representative | (248) 592-6308 | emorin@kimcorealty.com



Riverplace S.C.

Jacksonville, FL

www.kimcorealty.com/116500



DENSITY AERIAL

Edmee Morin

Leasing Representative | (248) 592-6308 | emorin@kimcorealty.com



■ Available ■ Non-Controlled ● Curbside Pick-up



	TENANT	SQ FT
1	American Freight [...]	28,020
2	World Market	21,750
3	Bath & Body Works	3,076
4	Renna's Pizza	1,540
5	First Watch The Daytime Cafe	3,500
6	Orangetheory Fitness	3,250
7	TJ Maxx	25,200
8	Famous Footwear	4,880
9	Available	2,960
10	Rack Room Shoes	6,120
11	Michaels	17,397
12	Mythical Mountain	6,158
13	Panera Bread	4,706
14	Available	2,490
15	Carter's	4,706
16	Hand & Stone Massage and [...]	2,838
17	Dollar Tree	9,816
18	Stewart Lighting	4,500
19	PS Nails	2,490
20	Sally Beauty Supply	2,075
21	Staples	22,125
22	Petco	16,722
23	H&R Block	1,955
24	Available	1,995
25	Sola Salon Studios	5,700
26	StretchLab	1,700
27	HomeSense	36,000
28	ISO ISO Ramen	2,903
29	Mambos Cuban Cafe	2,504
30	Mattress Firm	5,554
31	Supercuts	1,468
32	Oreck Floor Care Center	1,468

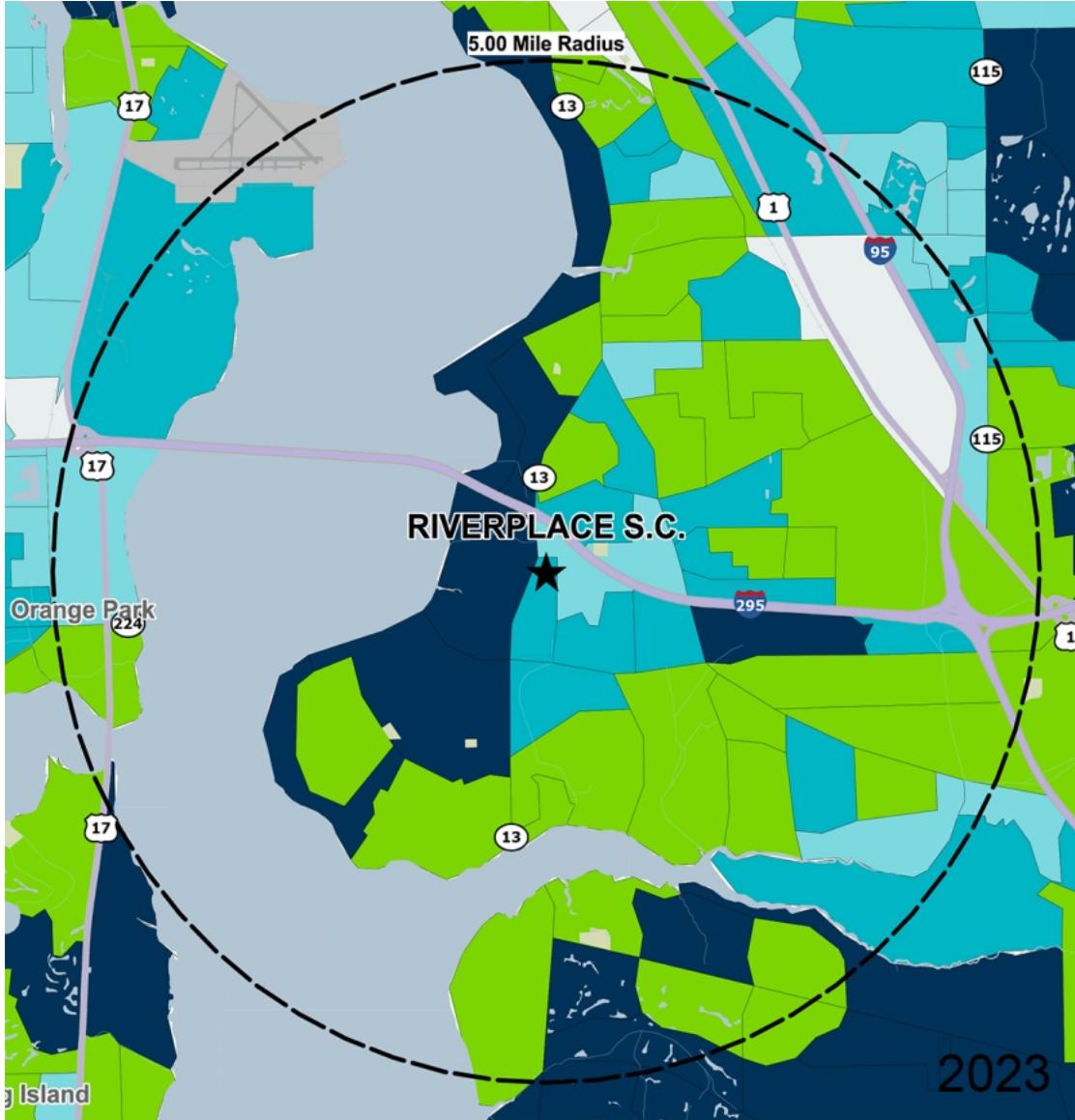
Disclaimer: This site plan shows the approximate location, square footage, and configuration of the shopping center and adjacent areas, and is only illustrative of the size and relationship of the stores and common areas generally, all of which are subject to change. The showing of any names of tenants, parking spaces, square footage, curb-cuts or traffic controls shall not be deemed to be a representation or warranty that any tenants will be at the shopping center, the square footage is accurate, or that any parking spaces, curb-cuts or traffic controls do or will continue to exist. Moreover, any demographics set forth in this flyer are for illustrative purposes only and shall not be deemed a representation by Landlord or their accuracy. Availability of this property for rent is subject to prior rental or withdrawal of the property from the market at any time without notice.

Edmee Morin

Leasing Representative | (248) 592-6308 | emorin@kimcorealty.com



COMPETITION MAP



by Block Group

Demographics

2023 ESTIMATES	1-MILE	3-MILES	5-MILES
Population	11,209	65,139	125,934
Daytime Pop	8,823	52,487	133,309
Households	4,810	26,689	50,274
Average HH Income	\$95,226	\$112,989	\$113,052
Median HH Income	\$69,338	\$82,312	\$82,598
Per Capita Income	\$41,052	\$46,775	\$45,848

Average Household Income

Popstats, 4Q 2023, Trade Area Systems



Riverplace S.C.

Claire Lane & State Road 13, Jacksonville, FL



Edmee Morin

Leasing Representative

(248) 592-6308

emorin@kimcorealty.com