



Wilton River Park S.C.

Wilton, CT

Bridgeport-Stamford-Norwalk (CT)



Ian Zimmerman

Leasing Representative

(516) 869-2639

izimmerman@kimcorealty.com





AERIAL

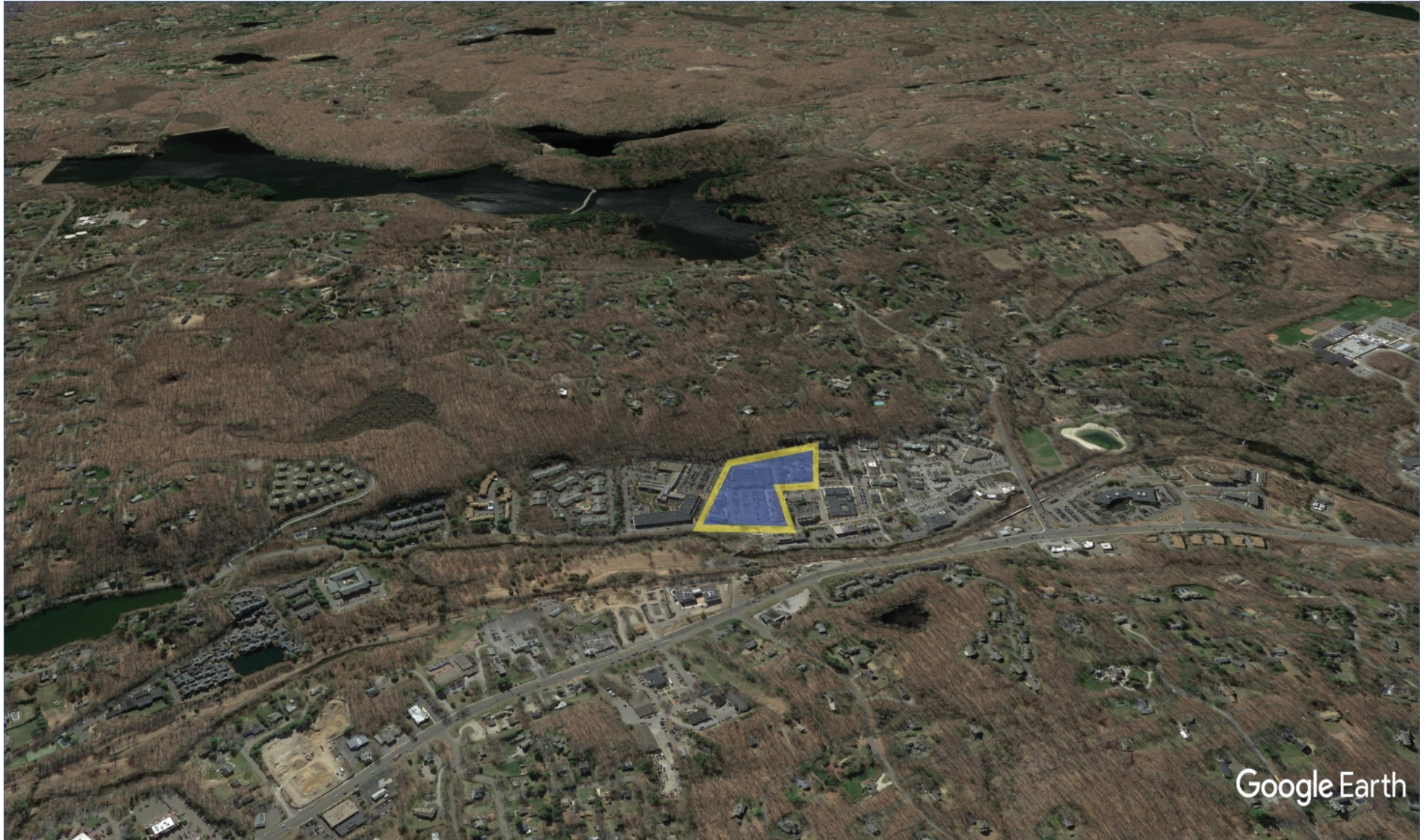


| | |
|---------------------------|-------------------|
| GROSS LEASABLE AREA (GLA) | 96,071 SF |
| PARKING SPACES | 894 |
| PARKING RATIO | 9.31 per 1,000 SF |

Ian Zimmerman

Leasing Representative | (516) 869-2639 | izimmerman@kimcorealty.com





DENSITY AERIAL

Ian Zimmerman

Leasing Representative | (516) 869-2639 | izimmerman@kimcorealty.com



■ Available ■ Potentially Available



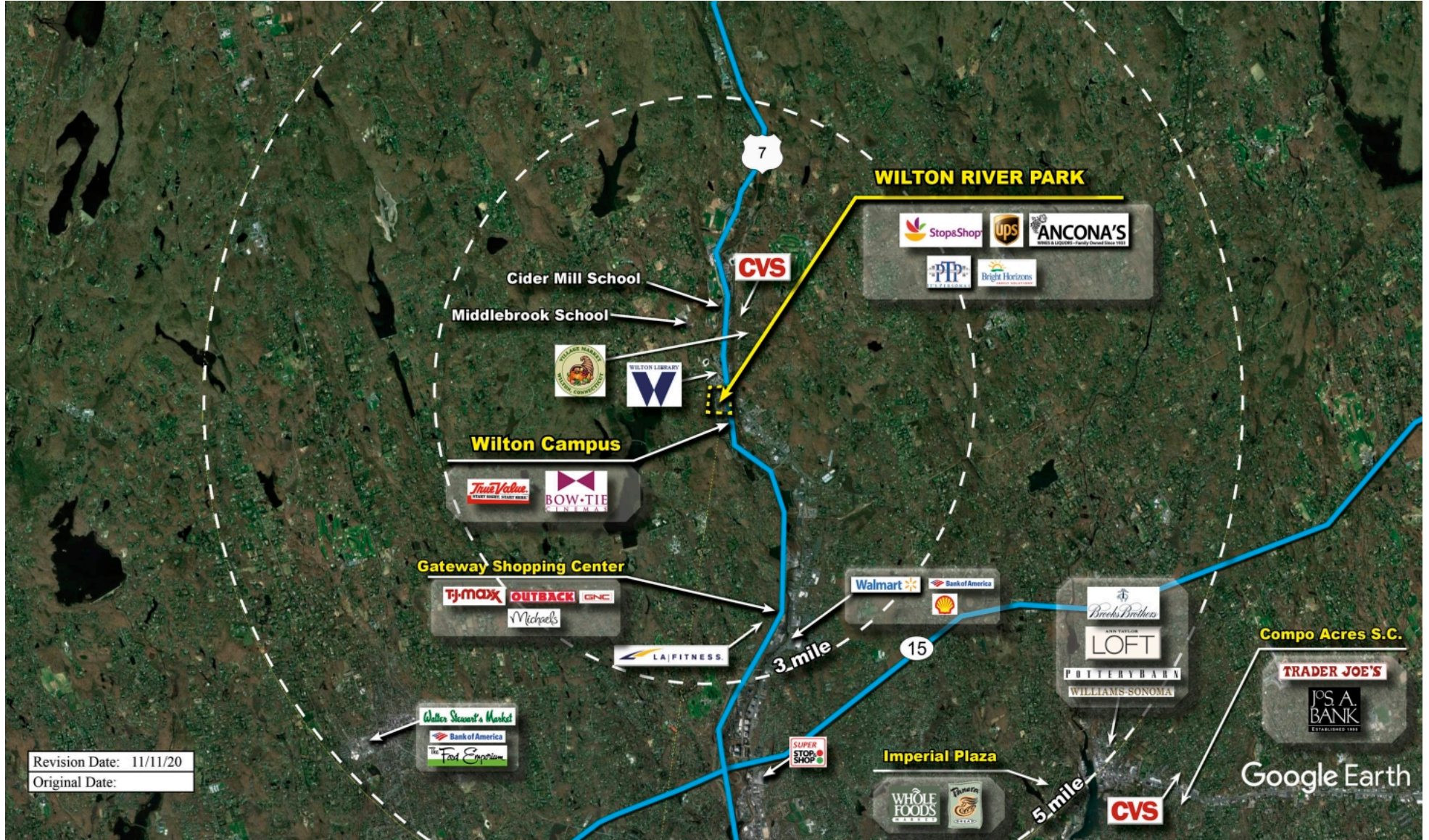
| | TENANT | SQ FT |
|----|-------------------------------|--------|
| 1 | Stop & Shop | 46,764 |
| 2 | Bright Horizons | 8,831 |
| 3 | The Vital Stretch | 1,383 |
| 4 | Craft 14 Kitchen + Bar | 2,232 |
| 5 | Ancona's Wines & Liquors | 2,153 |
| 6 | CT Fitness Lab | 3,201 |
| 8 | Tim La Bant Restaurant | 1,219 |
| 9 | Happy Wok | 1,174 |
| 10 | Great Clips | 921 |
| 11 | Cactus Rose Cantina | 2,584 |
| 12 | Shaolin Studios | 1,322 |
| 13 | Campus Jewelers | 955 |
| 14 | Available | 1,384 |
| 15 | Available | 794 |
| 16 | Sola Salon Studios | 4,100 |
| 17 | Fit Body Boot Camp | 2,112 |
| 18 | Wilton Reflexology | 916 |
| 19 | Kumon Math & Reading Center | 1,101 |
| 20 | Happy Hands Art & Pottery | 1,115 |
| 21 | Town Green Cleaners | 931 |
| 22 | The UPS Store | 1,308 |
| 23 | Sweet Pierre's | 449 |
| 24 | Press Burger | 1,670 |
| 25 | Sobol | 903 |
| 26 | Your CBD Store | 990 |
| 27 | Available | 1,505 |
| 28 | Available | 376 |
| 29 | Vision Search Partners | 1,237 |
| 30 | Baywater Associates | 226 |
| 31 | Available | 1,771 |
| 32 | Available (Former Restaurant) | 444 |

Disclaimer: This site plan shows the approximate location, square footage, and configuration of the shopping center and adjacent areas, and is only illustrative of the size and relationship of the stores and common areas generally, all of which are subject to change. The showing of any names of tenants, parking spaces, square footage, curb-cuts or traffic controls shall not be deemed to be a representation or warranty that any tenants will be at the shopping center, the square footage is accurate, or that any parking spaces, curb-cuts or traffic controls do or will continue to exist. Moreover, any demographics set forth in this flyer are for illustrative purposes only and shall not be deemed a representation by Landlord or their accuracy. Availability of this property for rent is subject to prior rental or withdrawal of the property from the market at any time without notice.

Ian Zimmerman

Leasing Representative | (516) 869-2639 | izimmerman@kimcorealty.com





Revision Date: 11/11/20
Original Date:

COMPETITION MAP

Ian Zimmerman

Leasing Representative | (516) 869-2639 | izimmerman@kimcorealty.com



by Block Group

Demographics

| 2022 ESTIMATES | 1-MILE | 3-MILES | 5-MILES |
|-------------------|-----------|-----------|-----------|
| Population | 2,825 | 22,784 | 84,731 |
| Daytime Pop | 6,175 | 31,124 | 82,839 |
| Households | 1,144 | 8,198 | 31,281 |
| Average HH Income | \$234,697 | \$276,485 | \$241,231 |
| Median HH Income | \$164,981 | \$177,846 | \$155,632 |
| Per Capita Income | \$97,370 | \$100,264 | \$89,521 |

Average Household Income

Popstats, 4Q 2022, Trade Area Systems

- \$150K and up
- \$100K - \$150K
- \$75K - \$100K
- \$50K - \$75K
- \$0K - \$50K



Wilton River Park S.C.

Old Ridgefield Rd. & Godfrey Pl., Wilton, CT



Ian Zimmerman

Leasing Representative

(516) 869-2639

izimmerman@kimcorealty.com