



# Tomball Crossing

Houston, TX

Houston-The Woodlands-Sugar Land (TX)



**Douglas Schooley**

Leasing Representative

(972) 638-5242

[dschooley@kimcorealty.com](mailto:dschooley@kimcorealty.com)







As of 03/14/24

AERIAL



GROSS LEASABLE AREA (GLA)	149,065 SF
PARKING SPACES	1,011
PARKING RATIO	6.78 per 1,000 SF

Douglas Schooley

Leasing Representative | (972) 638-5242 | dschooley@kimcorealty.com







DENSITY AERIAL

Douglas Schooley

Leasing Representative | (972) 638-5242 | [dschooley@kimcorealty.com](mailto:dschooley@kimcorealty.com)



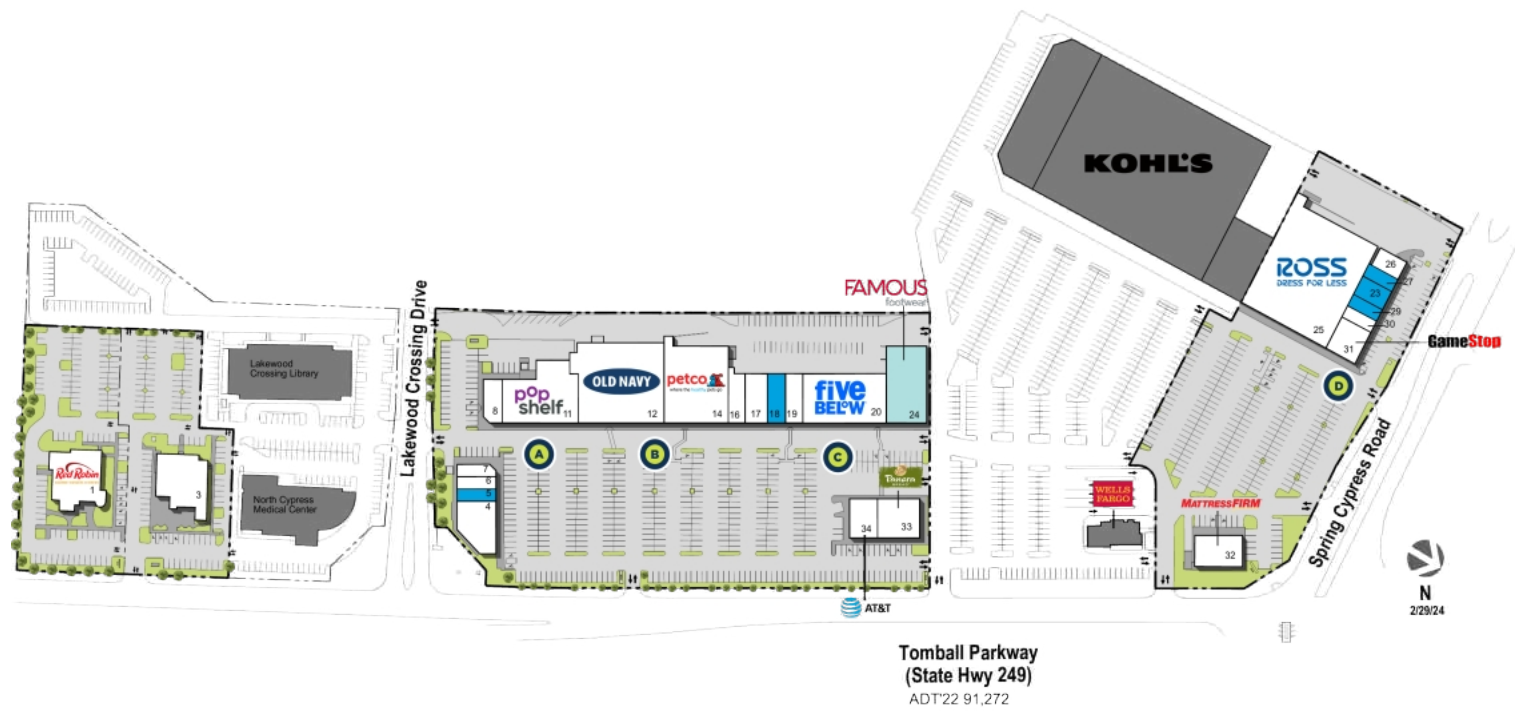


# Tomball Crossing

Houston, TX

www.kimcorealty.com/116930

■ Available 
 ■ Potentially Available 
 ■ Non-Controlled 
 A Curbside Pick-up



	TENANT	SQ FT
1	Red Robin	6,493
3	Lupe Tortilla	7,151
4	BreWingZ Sports Bar & Grill	4,900
5	Available	1,300
6	CGS Hair Studio	1,300
7	Sharkey's Cuts for Kids	1,200
8	Mariner Finance	2,193
11	pOpshelf	10,729
12	Old Navy	19,222
14	Petco	13,500
16	Music & Arts Center	3,000
17	Zales Jewelers	3,000
18	Available	2,400
19	M & J Nails Bar	2,320
20	Five Below	10,480
23	Available	1,800
24	Famous Footwear	8,125
25	Ross Dress for Less	30,176
26	Top Donuts	1,200
27	Available (Former Dental)	1,650
29	Available (Former Nail Salon)	1,150
30	Sport Clips	1,123
31	GameStop	3,153
32	Mattress Firm	4,000
33	Panera Bread	4,500
34	AT&T Wireless	3,000

Disclaimer: This site plan shows the approximate location, square footage, and configuration of the shopping center and adjacent areas, and is only illustrative of the size and relationship of the stores and common areas generally, all of which are subject to change. The showing of any names of tenants, parking spaces, square footage, curb-cuts or traffic controls shall not be deemed to be a representation or warranty that any tenants will be at the shopping center, the square footage is accurate, or that any parking spaces, curb-cuts or traffic controls do or will continue to exist. Moreover, any demographics set forth in this flyer are for illustrative purposes only and shall not be deemed a representation by Landlord or their accuracy. Availability of this property for rent is subject to prior rental or withdrawal of the property from the market at any time without notice.

**Douglas Schooley**

Leasing Representative | (972) 638-5242 | dschooley@kimcorealty.com





# Tomball Crossing

Houston, TX

www.kimcorealty.com/116930



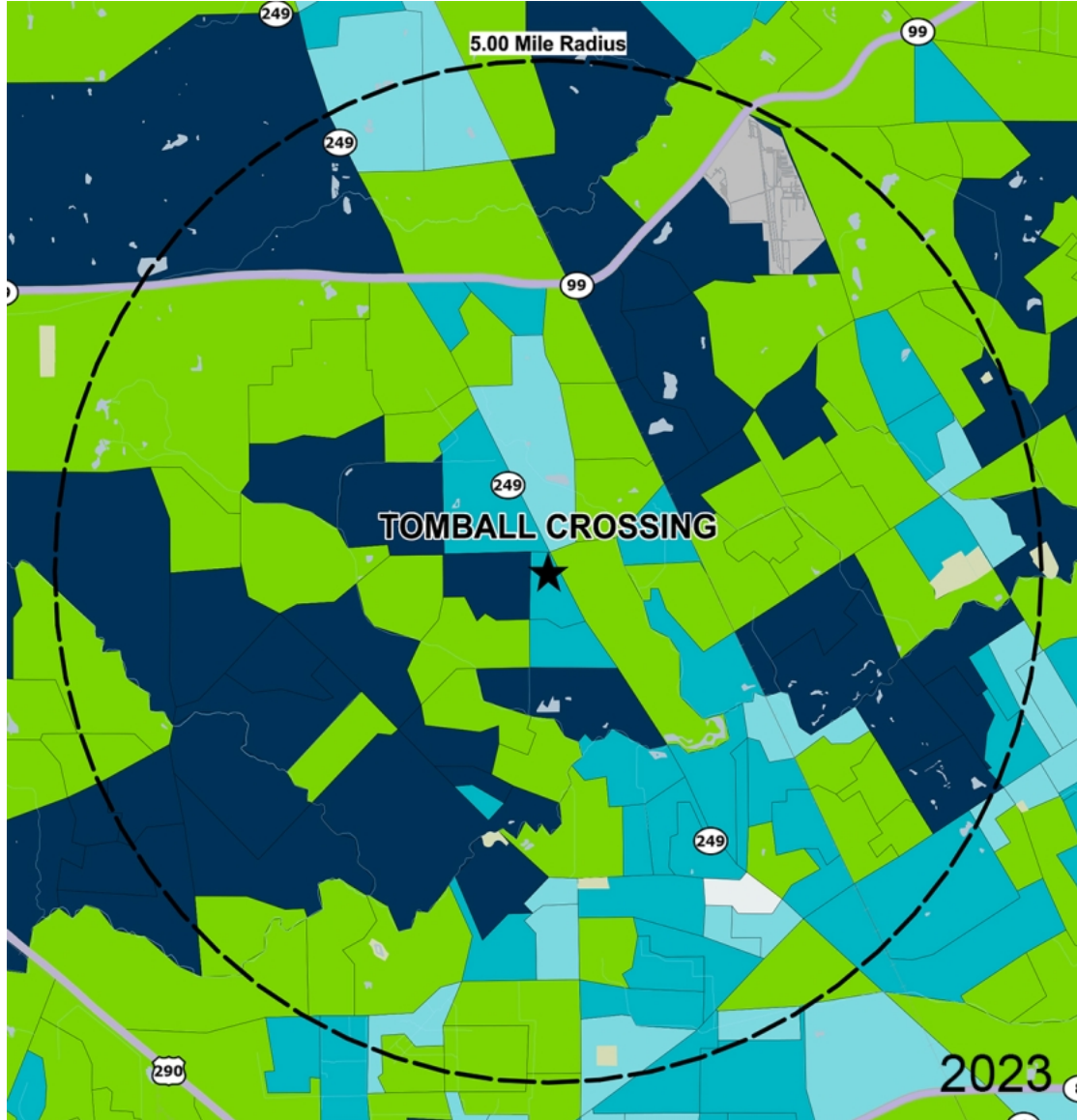
COMPETITION MAP

Douglas Schooley

Leasing Representative | (972) 638-5242 | dschooley@kimcorealty.com







by Block Group

## Demographics

2023 ESTIMATES	1-MILE	3-MILES	5-MILES
Population	10,758	113,828	250,201
Daytime Pop	6,950	84,340	196,451
Households	4,062	40,053	88,888
Average HH Income	\$117,017	\$131,501	\$127,065
Median HH Income	\$88,925	\$107,292	\$97,585
Per Capita Income	\$44,326	\$46,394	\$45,292

## Average Household Income

Popstats, 4Q 2023, Trade Area Systems

- \$150K and up
- \$100K - \$150K
- \$75K - \$100K
- \$50K - \$75K
- \$0K - \$50K



# Tomball Crossing

State Hwy. 249 & Lakewood Crossing Dr., Houston, TX



**Douglas Schooley**

Leasing Representative

(972) 638-5242

[dschooley@kimcorealty.com](mailto:dschooley@kimcorealty.com)