



Tomball Crossing

Houston, TX

Houston-The Woodlands-Sugar Land (TX)



Lauren Heimann

Leasing Representative

(346) 340-6412

lheimann@kimcorealty.com





As of 03/14/24

Google Earth

AERIAL



GROSS LEASABLE AREA (GLA)	149,065 SF
PARKING SPACES	1,011
PARKING RATIO	6.78 per 1,000 SF

Lauren Heimann

Leasing Representative | (346) 340-6412 | lheimann@kimcorealty.com





DENSITY AERIAL

Lauren Heimann

Leasing Representative | (346) 340-6412 | lheimann@kimcorealty.com

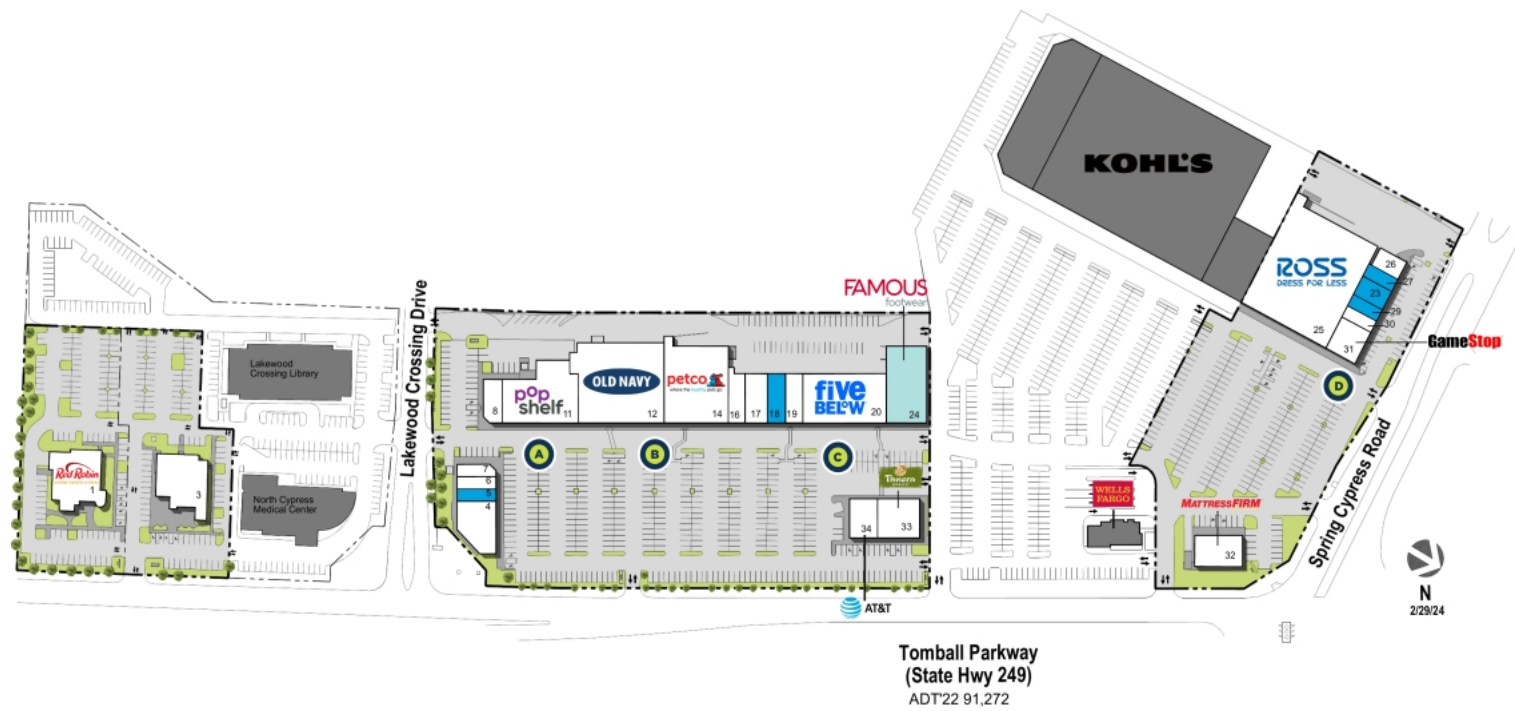


Tomball Crossing

Houston, TX

www.kimcorealty.com/116930

■ Available
 ■ Potentially Available
 ■ Non-Controlled
 A Curbside Pick-up



	TENANT	SQ FT
1	Red Robin	6,493
3	Lupe Tortilla	7,151
4	BreWingZ Sports Bar & Grill	4,900
5	Available	1,300
6	CGS Hair Studio	1,300
7	Sharkey's Cuts for Kids	1,200
8	Mariner Finance	2,193
11	pOpshelf	10,729
12	Old Navy	19,222
14	Petco	13,500
16	Music & Arts Center	3,000
17	Zales Jewelers	3,000
18	Available	2,400
19	M & J Nails Bar	2,320
20	Five Below	10,480
23	Available	1,800
24	Famous Footwear	8,125
25	Ross Dress for Less	30,176
26	Top Donuts	1,200
27	Available (Former Dental)	1,650
29	Available (Former Nail Salon)	1,150
30	Sport Clips	1,123
31	GameStop	3,153
32	Mattress Firm	4,000
33	Panera Bread	4,500
34	AT&T Wireless	3,000

Disclaimer: This site plan shows the approximate location, square footage, and configuration of the shopping center and adjacent areas, and is only illustrative of the size and relationship of the stores and common areas generally, all of which are subject to change. The showing of any names of tenants, parking spaces, square footage, curb-cuts or traffic controls shall not be deemed to be a representation or warranty that any tenants will be at the shopping center, the square footage is accurate, or that any parking spaces, curb-cuts or traffic controls do or will continue to exist. Moreover, any demographics set forth in this flyer are for illustrative purposes only and shall not be deemed a representation by Landlord or their accuracy. Availability of this property for rent is subject to prior rental or withdrawal of the property from the market at any time without notice.

Lauren Heimann

Leasing Representative | (346) 340-6412 | lheimann@kimcorealty.com



Tomball Crossing

Houston, TX

www.kimcorealty.com/116930

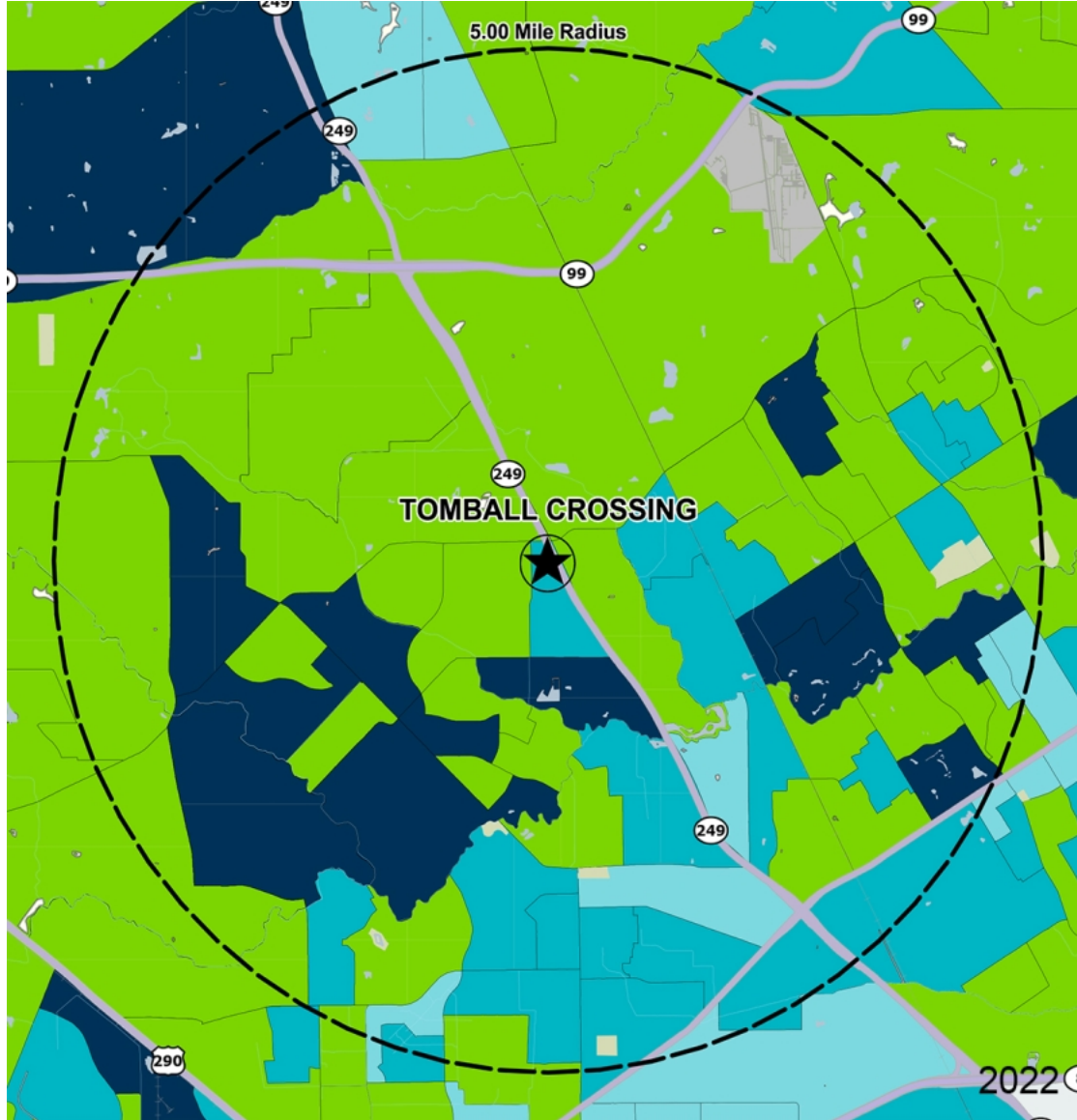


COMPETITION MAP

Lauren Heimann

Leasing Representative | (346) 340-6412 | lheimann@kimcorealty.com





by Block Group

Demographics

2022 ESTIMATES	1-MILE	3-MILES	5-MILES
Population	10,856	109,827	240,592
Daytime Pop	6,915	81,986	211,274
Households	3,857	38,457	87,225
Average HH Income	\$113,369	\$123,893	\$120,191
Median HH Income	\$94,226	\$101,586	\$92,442
Per Capita Income	\$40,284	\$43,422	\$43,615

Average Household Income

Popstats, 4Q 2022, Trade Area Systems

- \$150K and up
- \$100K - \$150K
- \$75K - \$100K
- \$50K - \$75K
- \$0K - \$50K



Tomball Crossing

State Hwy. 249 & Lakewood Crossing Dr., Houston, TX



Lauren Heimann

Leasing Representative

(346) 340-6412

lheimann@kimcorealty.com