



Union Turnpike S.C.

Kew Gardens Hills, NY

New York-Newark-Jersey City (NY-NJ-PA)



Ian Zimmerman

Leasing Representative

(516) 869-2639

izimmerman@kimcorealty.com





AERIAL



GROSS LEASABLE AREA (GLA)	10,790 SF
PARKING SPACES	5



DENSITY AERIAL



Property Overview

This center is located in the heart of Kew Gardens, New York, with excellent visibility to Union Turnpike.

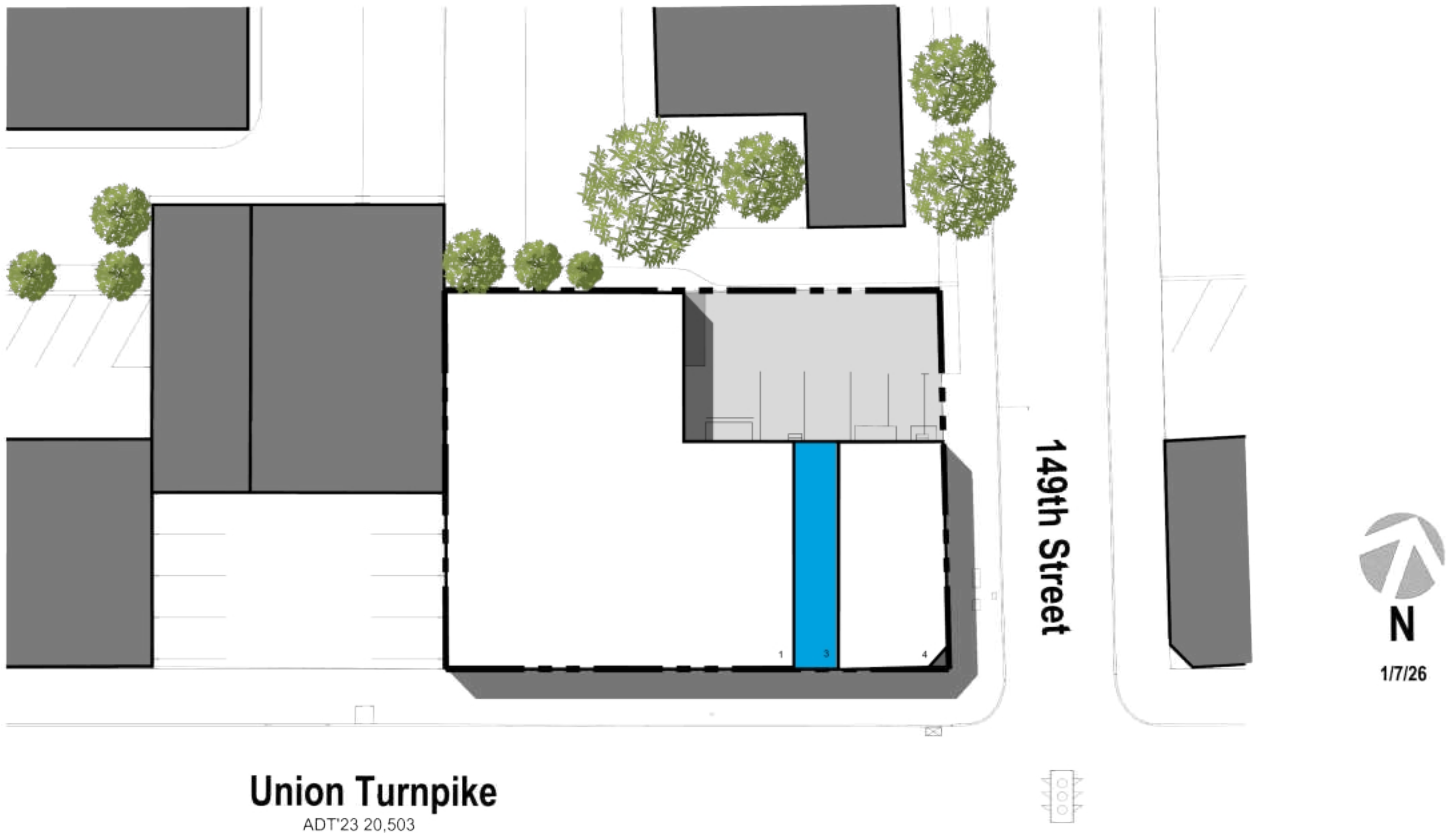
Ian Zimmerman

Leasing Representative | (516) 869-2639 | izimmerman@kimcorealty.com



Available

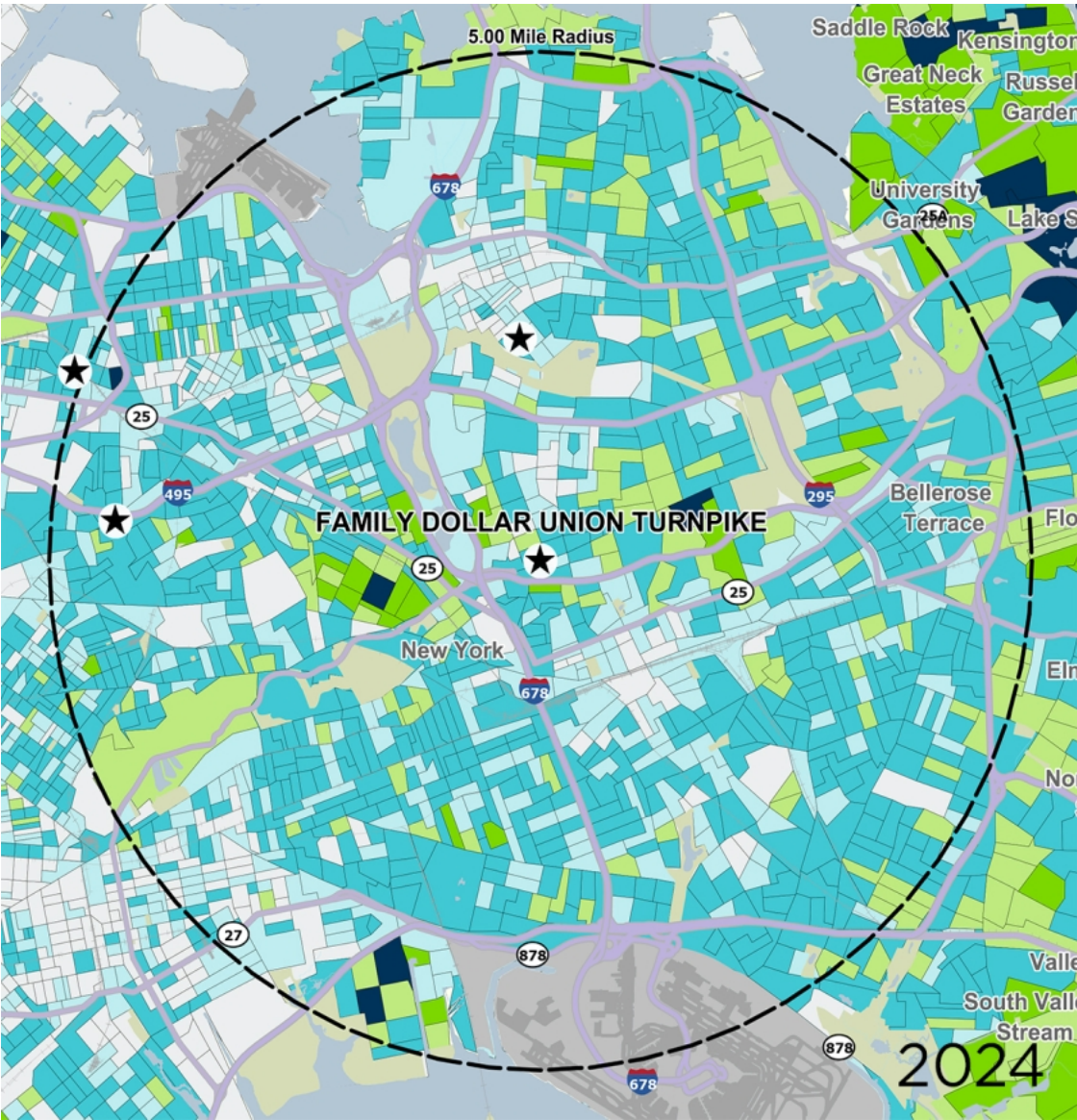
	TENANT	SQ FT
1	TENANT	8,060
3	Available	810
4	Turnpike Burgers	2,730



Disclaimer: This site plan shows the approximate location, square footage, and configuration of the shopping center and adjacent areas, and is only illustrative of the size and relationship of the stores and common areas generally, all of which are subject to change. The showing of any names of tenants, parking spaces, square footage, curb-cuts or traffic controls shall not be deemed to be a representation or warranty that any tenants will be at the shopping center, the square footage is accurate, or that any parking spaces, curb-cuts or traffic controls do or will continue to exist. Moreover, any demographics set forth in this flyer are for illustrative purposes only and shall not be deemed a representation by Landlord or their accuracy. Availability of this property for rent is subject to prior rental or withdrawal of the property from the market at any time without notice.



COMPETITION MAP



by Block Group

Demographics

2024 ESTIMATES	1-MILE	3-MILES	5-MILES
Population	92,949	804,416	1,949,413
Daytime Pop	99,132	729,844	1,632,765
Households	33,406	275,979	654,798
Average HH Income	\$111,073	\$110,877	\$110,866
Median HH Income	\$88,299	\$83,160	\$84,322
Per Capita Income	\$40,496	\$38,386	\$37,544

Average Household Income

Popstats, 4Q 2024, Trade Area Systems



Ian Zimmerman

Leasing Representative | (516) 869-2639 | izimmerman@kimcorealty.com

Union Turnpike S.C.

147-29 Union tpke, Kew Gardens Hills, NY



Ian Zimmerman

Leasing Representative

(516) 869-2639

izimmerman@kimcorealty.com