



# Westhill Village

Houston, TX

Houston-The Woodlands-Sugar Land (TX)



**Christi Vinzant**

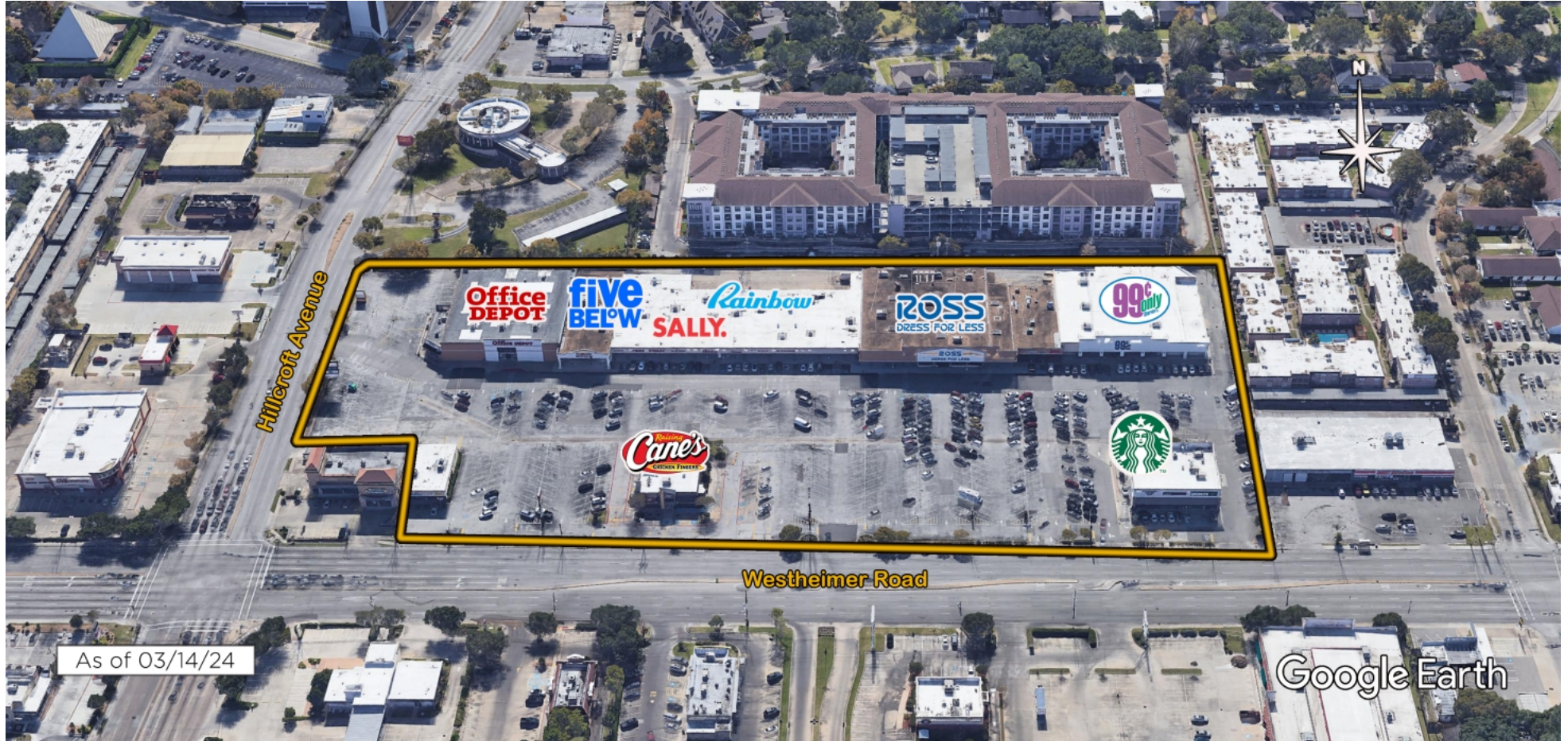
Leasing Representative

(713) 866-6914

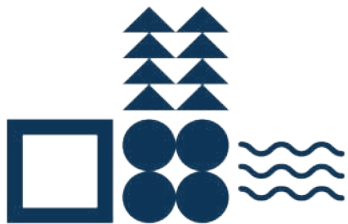
[cvinzant@kimcorealty.com](mailto:cvinzant@kimcorealty.com)







AERIAL



GROSS LEASABLE AREA (GLA)

130,851 SF

PARKING SPACES

605

Christi Vinzant

Leasing Representative | (713) 866-6914 | cvinzant@kimcorealty.com





DENSITY AERIAL

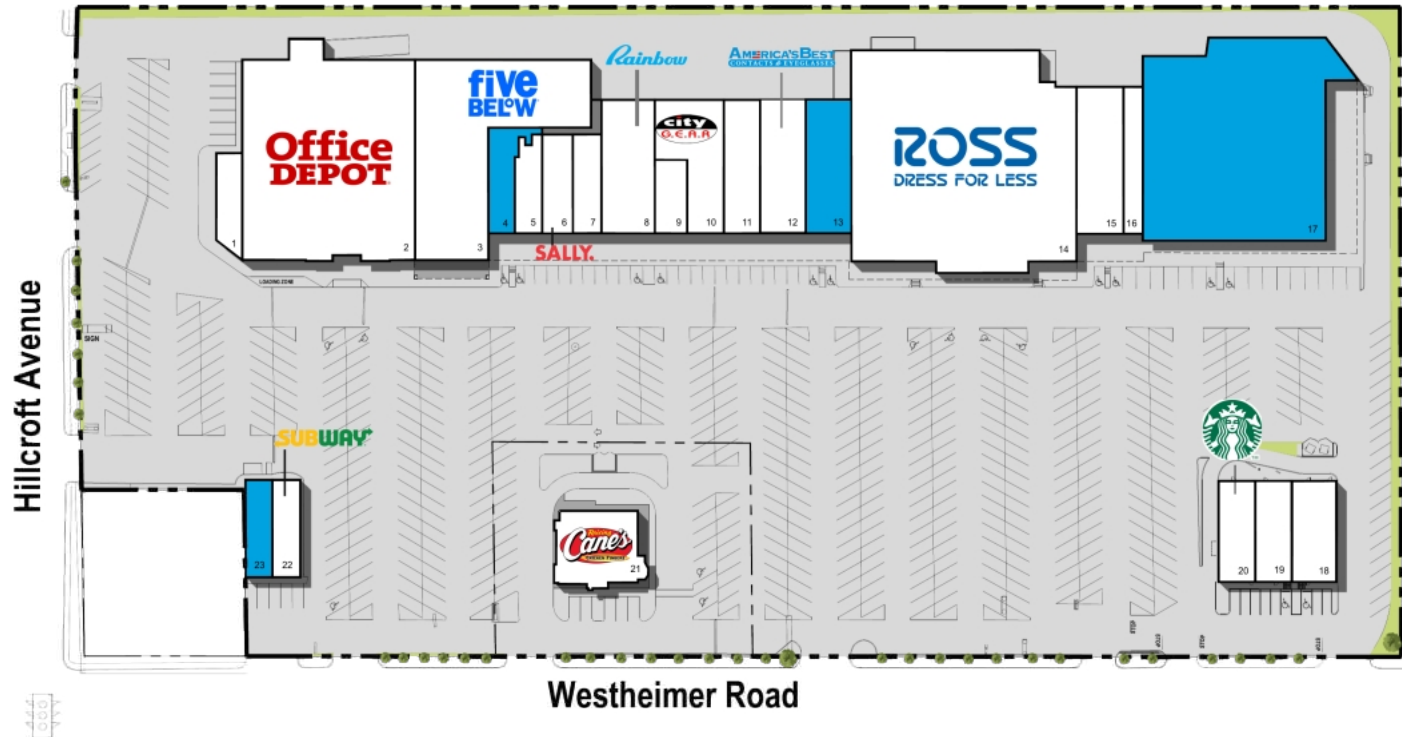
Christi Vinzant

Leasing Representative | (713) 866-6914 | [cvinzant@kimcorealty.com](mailto:cvinzant@kimcorealty.com)





Available



|    | TENANT                          | SQ FT  |
|----|---------------------------------|--------|
| 1  | Tacos De Julio                  | 1,450  |
| 2  | Office Depot                    | 20,340 |
| 3  | Five Below                      | 12,310 |
| 4  | Available                       | 1,911  |
| 5  | Voss Nails                      | 1,452  |
| 6  | Sally Beauty Supply             | 1,755  |
| 7  | Q Salon                         | 1,650  |
| 8  | Rainbow                         | 4,100  |
| 9  | Phone Repair Ambulance          | 1,375  |
| 10 | City Gear                       | 3,975  |
| 11 | Seville Cleaners                | 2,800  |
| 12 | America's Best Contacts & [...] | 3,500  |
| 13 | Available                       | 3,665  |
| 14 | Ross Dress for Less             | 27,685 |
| 15 | Café Mawal Express              | 3,850  |
| 16 | Professional Hair Salon         | 1,650  |
| 17 | Available                       | 24,061 |
| 18 | Moussa Butcher Shop & Grill     | 2,500  |
| 19 | Luna Pizzeria                   | 2,150  |
| 20 | Starbucks                       | 2,100  |
| 21 | Raising Cane's Chicken Fingers  | 3,545  |
| 22 | Subway                          | 1,515  |
| 23 | Available                       | 1,512  |



Disclaimer: This site plan shows the approximate location, square footage, and configuration of the shopping center and adjacent areas, and is only illustrative of the size and relationship of the stores and common areas generally, all of which are subject to change. The showing of any names of tenants, parking spaces, square footage, curb-cuts or traffic controls shall not be deemed to be a representation or warranty that any tenants will be at the shopping center, the square footage is accurate, or that any parking spaces, curb-cuts or traffic controls do or will continue to exist. Moreover, any demographics set forth in this flyer are for illustrative purposes only and shall not be deemed a representation by Landlord or their accuracy. Availability of this property for rent is subject to prior rental or withdrawal of the property from the market at any time without notice.

Christi Vinzant

Leasing Representative | (713) 866-6914 | cvinzant@kimcorealty.com





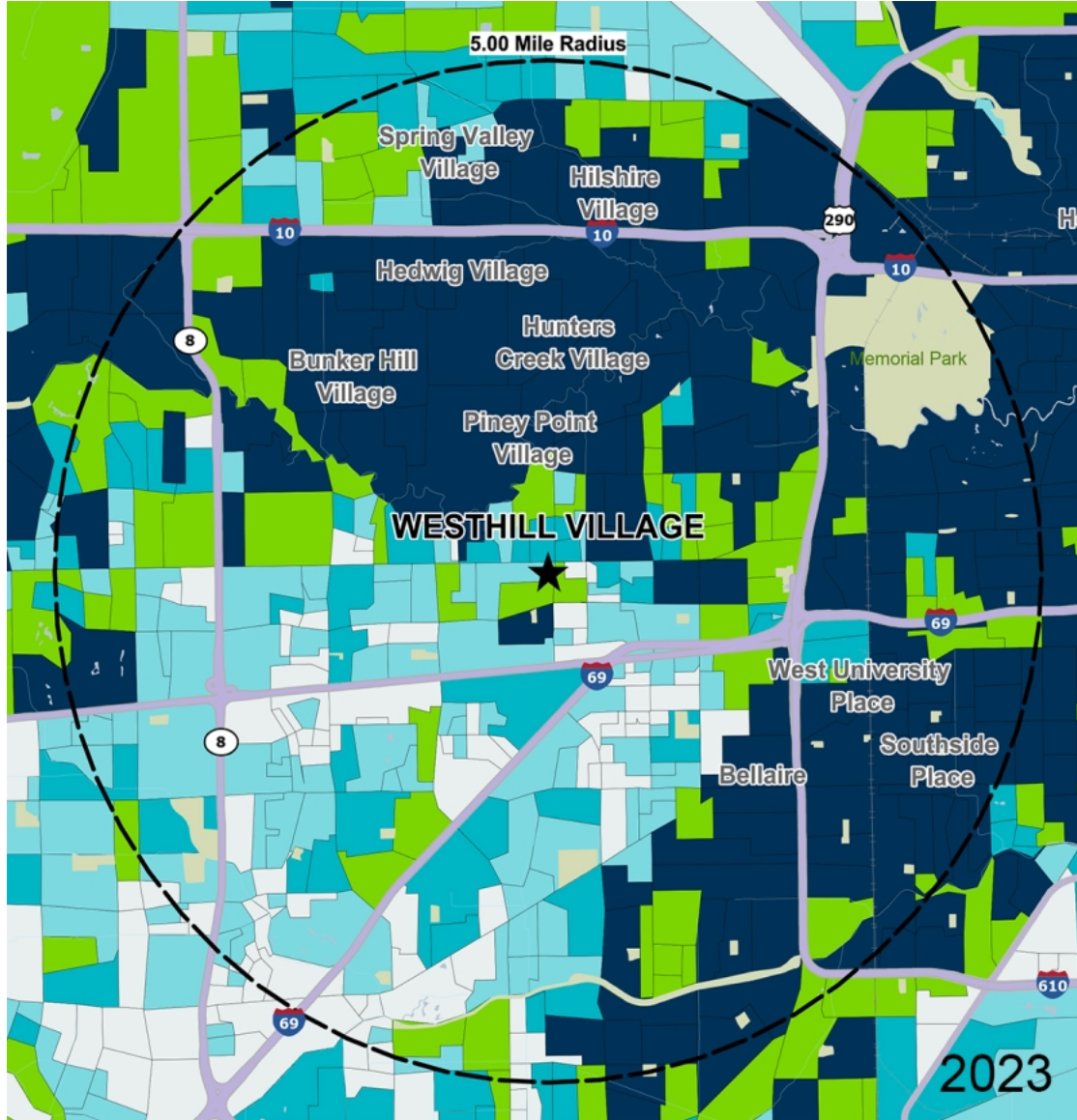


COMPETITION MAP

Christi Vinzant

Leasing Representative | (713) 866-6914 | cvinzant@kimcorealty.com





by Block Group

## Demographics

| 2023 ESTIMATES    | 1-MILE   | 3-MILES   | 5-MILES   |
|-------------------|----------|-----------|-----------|
| Population        | 34,140   | 221,596   | 529,067   |
| Daytime Pop       | 30,084   | 272,175   | 624,948   |
| Households        | 15,965   | 98,440    | 223,353   |
| Average HH Income | \$90,250 | \$112,440 | \$133,337 |
| Median HH Income  | \$56,236 | \$61,383  | \$70,695  |
| Per Capita Income | \$42,867 | \$50,249  | \$56,576  |

## Average Household Income

Popstats, 4Q 2023, Trade Area Systems

- \$150K and up
- \$100K - \$150K
- \$75K - \$100K
- \$50K - \$75K
- \$0K - \$50K



# Westhill Village

Westheimer Rd. & Hillcroft Ave, Houston, TX



**Christi Vinzant**

Leasing Representative

(713) 866-6914

[cvinzant@kimcorealty.com](mailto:cvinzant@kimcorealty.com)