



Festival on Jefferson Court

Louisville, KY

Louisville/Jefferson County (KY-IN)



Katie Littlejohn

Leasing Representative

(404) 260-7144

klittlejohn@kimcorealty.com



Festival on Jefferson Court

Louisville, KY

www.kimcorealty.com/117960



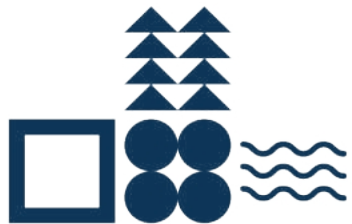
AERIAL

GROSS LEASABLE AREA (GLA)

169,783 SF

PARKING SPACES

774



Katie Littlejohn

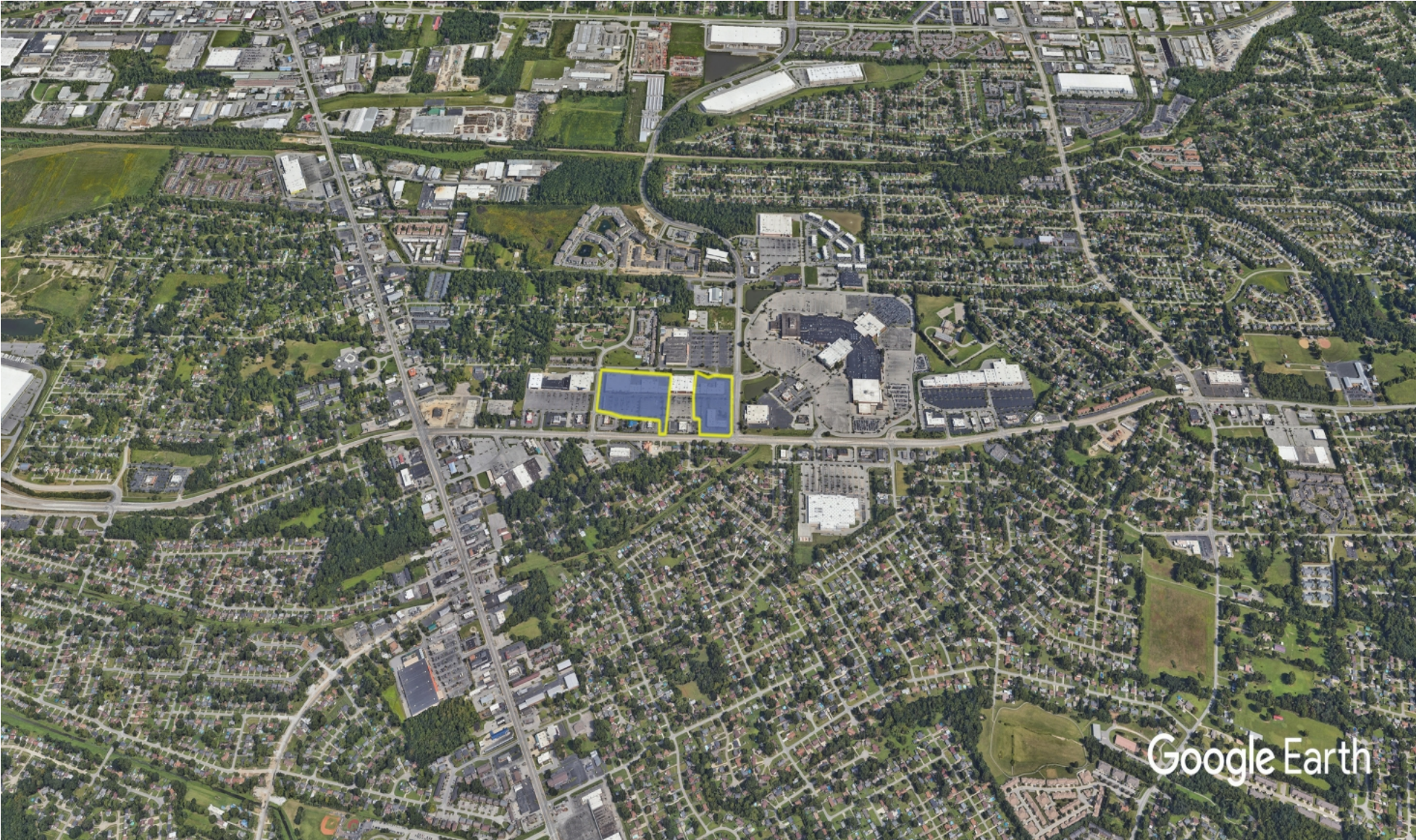
Leasing Representative | (404) 260-7144 | klittlejohn@kimcorealty.com



Festival on Jefferson Court

Louisville, KY

www.kimcorealty.com/117960



DENSITY AERIAL

Katie Littlejohn

Leasing Representative | (404) 260-7144 | klittlejohn@kimcorealty.com

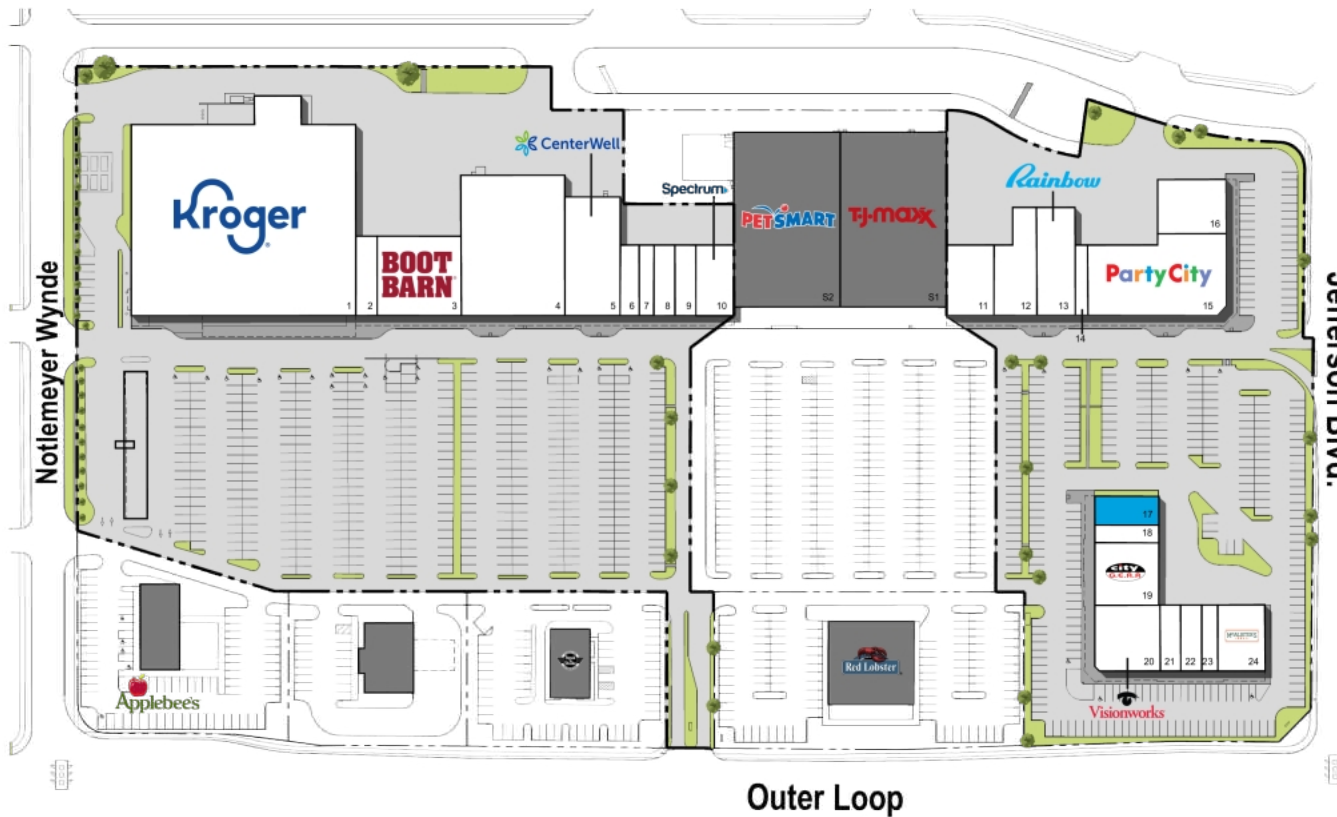


Festival on Jefferson Court

Louisville, KY

www.kimcorealty.com/117960

■ Available ■ Non-Controlled



TENANT	SQ FT
1 Kroger	59,976
2 H&R Block	2,305
3 Boot Barn Western and Work Wea	9,100
4 Nadia Beauty Supply	19,200
5 Centerwell	8,775
6 Nail Salon	1,800
7 Miracle-Ear	1,400
8 Game XChange	2,000
9 Sally Beauty Supply	2,000
10 Spectrum	3,520
11 Lane Bryant	4,480
12 Results Physiotherapy	4,636
13 Rainbow	5,625
14 The UPS Store	1,200
15 Party City, The Discount Party	14,420
16 Sleep Outfitters	5,000
17 Available (Former Dental)	2,494
18 The Joint Chiropractic	1,520
19 City Gear	5,397
20 Visionworks	5,613
21 Wingstop	1,829
22 Papa Johns	1,868
23 Cricket Wireless	1,425
24 McAlister's Deli	4,200

Disclaimer: This site plan shows the approximate location, square footage, and configuration of the shopping center and adjacent areas, and is only illustrative of the size and relationship of the stores and common areas generally, all of which are subject to change. The showing of any names of tenants, parking spaces, square footage, curb-cuts or traffic controls shall not be deemed to be a representation or warranty that any tenants will be at the shopping center, the square footage is accurate, or that any parking spaces, curb-cuts or traffic controls do or will continue to exist. Moreover, any demographics set forth in this flyer are for illustrative purposes only and shall not be deemed a representation by Landlord or their accuracy. Availability of this property for rent is subject to prior rental or withdrawal of the property from the market at any time without notice.

Katie Littlejohn

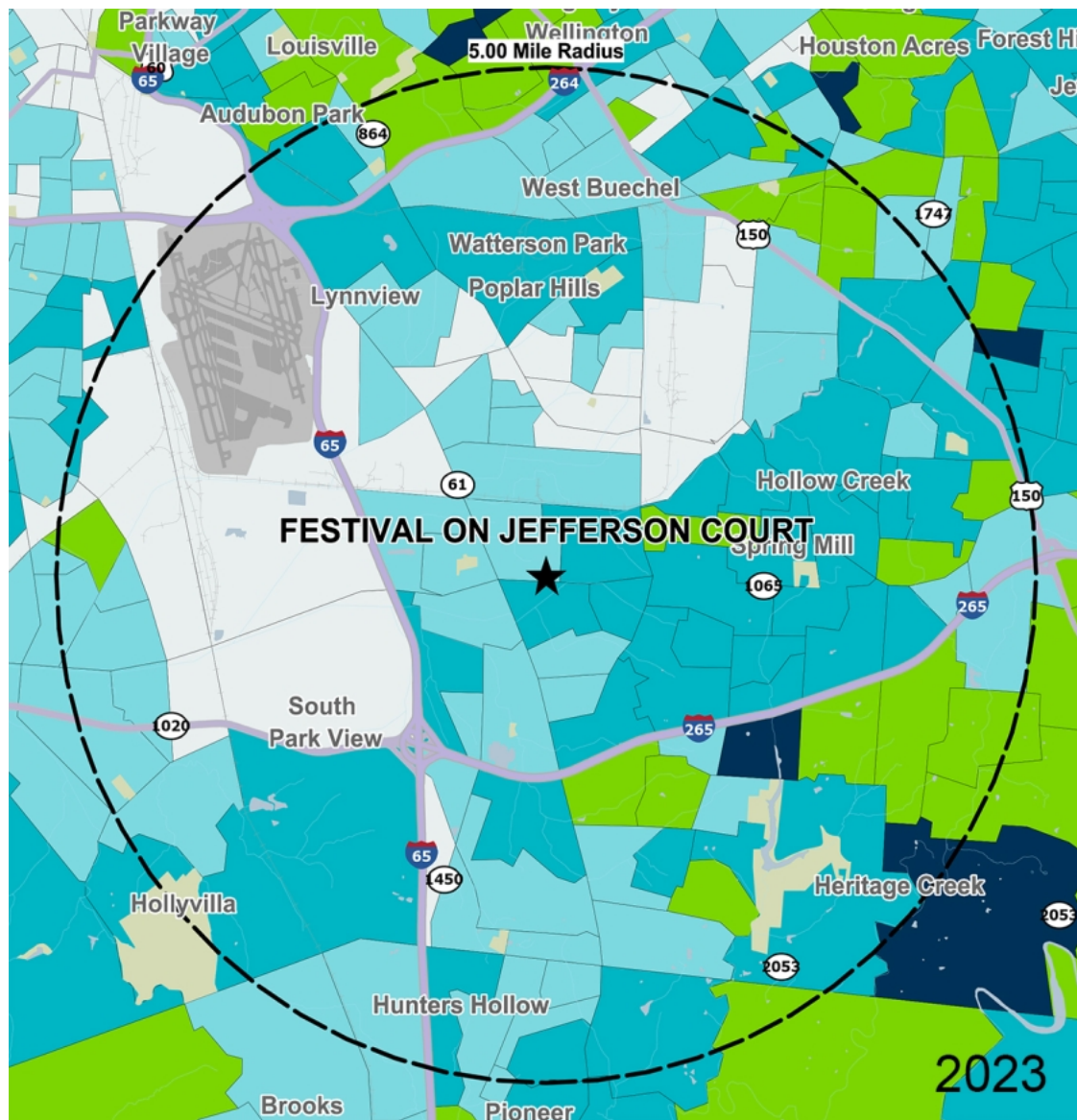
Leasing Representative | (404) 260-7144 | klittlejohn@kimcorealty.com



Festival on Jefferson Court

Louisville, KY

www.kimcorealty.com/117960



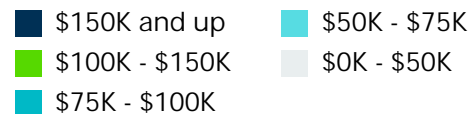
by Block Group

Demographics

2022 ESTIMATES	1-MILE	3-MILES	5-MILES
Population	10,800	76,057	177,947
Daytime Pop	13,069	71,076	182,279
Households	4,482	30,040	71,712
Average HH Income	\$61,160	\$66,900	\$71,499
Median HH Income	\$53,437	\$55,273	\$57,360
Per Capita Income	\$25,696	\$26,578	\$28,958

Average Household Income

Popstats, 4Q 2022, Trade Area Systems



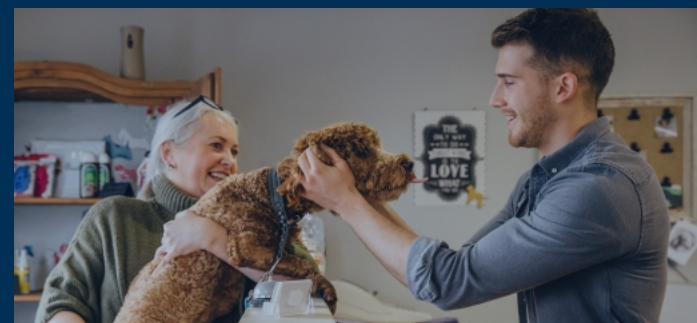
Katie Littlejohn

Leasing Representative | (404) 260-7144 | klittlejohn@kimcorealty.com



Festival on Jefferson Court

Outer Loop & Jefferson Blvd., Louisville, KY



Katie Littlejohn

Leasing Representative

(404) 260-7144

klittlejohn@kimcorealty.com