



Countryside Centre

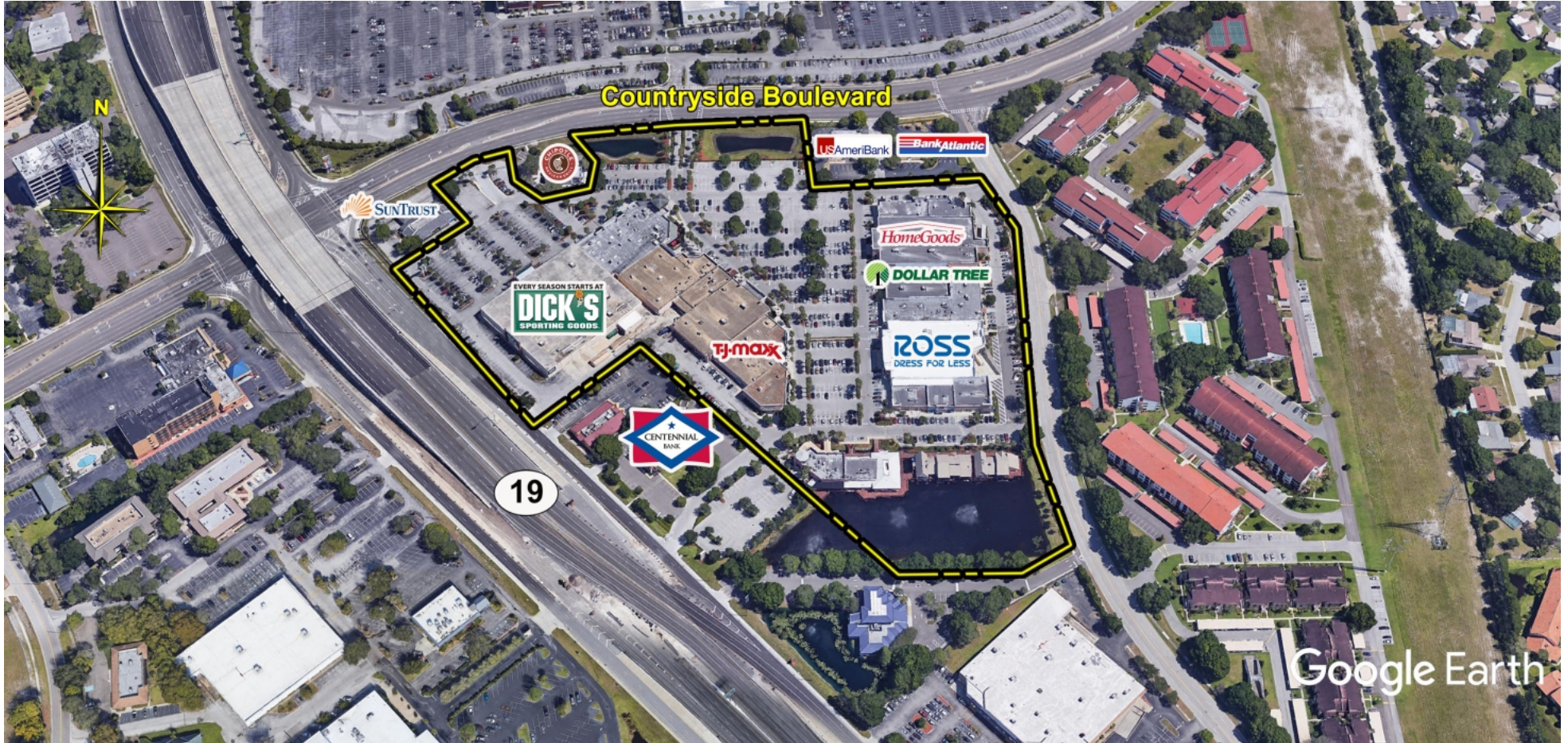
Clearwater, FL

Tampa-St. Petersburg-Clearwater (FL)

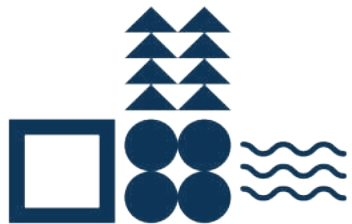


Spencer Phelps
Leasing Representative
(407) 302-6518
sphelps@kimcorealty.com





AERIAL



GROSS LEASABLE AREA (GLA)

248,348 SF

PARKING SPACES

844

Spencer Phelps

Leasing Representative | (407) 302-6518 | sphelps@kimcorealty.com



DENSITY AERIAL

Spencer Phelps

Leasing Representative | (407) 302-6518 | sphelps@kimcorealty.com

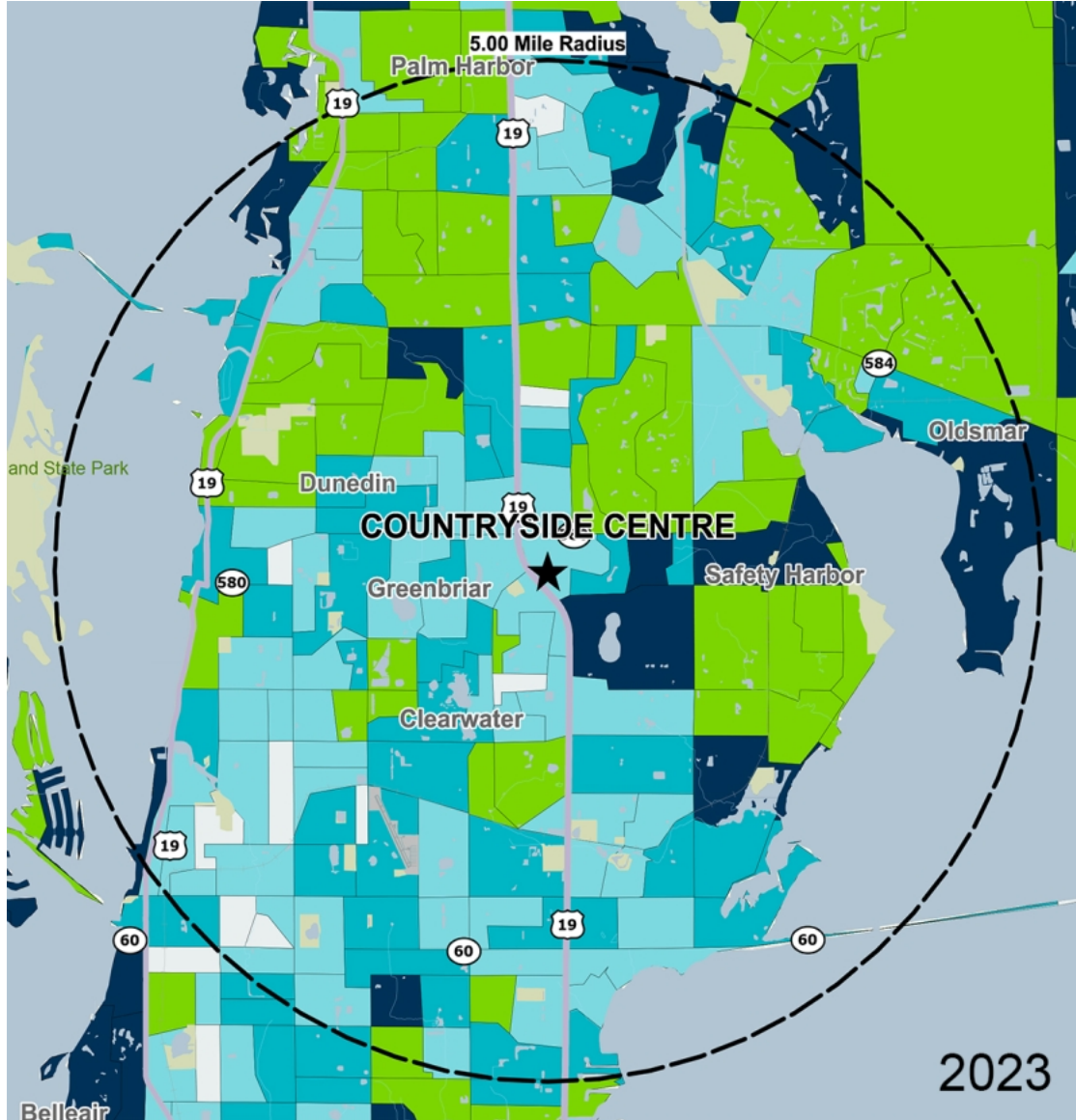


■ Available ■ Non-Controlled



	TENANT	SQ FT
1	Dick's	54,563
2	DXL Mens Apparel, Destination	5,264
3	Berkshire Hathaway Home Servic	6,794
4	Kaia Bowls	1,575
5	GrillSmith	7,282
6	Party City	12,000
7	D'Lites Ice Cream	1,340
8	First Watch The Daytime Café	3,950
9	Clarkson Eyecare	1,848
10	TJ Maxx	30,107
11	Emerson and Friends	945
12	Milan Laser Hair Removal	1,950
13	E Nails	1,525
14	Yamaha Pianos	6,328
15	Florida Blue	5,604
16	BankUnited	4,264
17	HomeGoods	25,000
18	Dollar Tree	12,001
19	Hobby Town	5,413
20	Phenix Salon Suites	6,322
21	Ross Dress for Less	25,166
22	Sally Beauty Supply	1,623
23	Available (Former Restaurant)	1,500
24	Available	8,117
25	Available	3,000
26	Available	841
27	Design One Jewelers	600
28	Beautiful Skin	866
29	My Broken Phone	600
30	Boardwalk Pizza	868
31	Nothing Bundt Cakes	1,862
32	VenusMedSpa	1,370
33	Nine Spice Hot Pot Korean BBQ	7,860

Disclaimer: This site plan shows the approximate location, square footage, and configuration of the shopping center and adjacent areas, and is only illustrative of the size and relationship of the stores and common areas generally, all of which are subject to change. The showing of any names of tenants, parking spaces, square footage, curb-cuts or traffic controls shall not be deemed to be a representation or warranty that any tenants will be at the shopping center, the square footage is accurate, or that any parking spaces, curb-cuts or traffic controls do or will continue to exist. Moreover, any demographics set forth in this flyer are for illustrative purposes only and shall not be deemed a representation by Landlord or their accuracy. Availability of this property for rent is subject to prior rental or withdrawal of the property from the market at any time without notice.



by Block Group

Demographics

2023 ESTIMATES	1-MILE	3-MILES	5-MILES
Population	14,058	106,523	232,266
Daytime Pop	15,526	104,655	227,334
Households	7,371	50,028	106,011
Average HH Income	\$85,428	\$93,132	\$90,825
Median HH Income	\$57,893	\$65,558	\$65,152
Per Capita Income	\$44,804	\$44,332	\$42,096

Average Household Income

Popstats, 4Q 2023, Trade Area Systems

- \$150K and up
- \$100K - \$150K
- \$75K - \$100K
- \$50K - \$75K
- \$0K - \$50K



Countryside Centre

Countryside Blvd. & US Hwy 19, Clearwater, FL



Spencer Phelps

Leasing Representative

(407) 302-6518

sphelps@kimcorealty.com