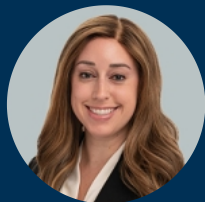




Stevens Creek Central

San Jose, CA

San Jose-Sunnyvale-Santa Clara (CA)



Chrystelle Azcona
Leasing Representative
(650) 746-7506
cazcona@kimcorealty.com

KRC Property Management I, Inc., a Subsidiary of Kimco Realty®
CA Broker's ID: 01920629 | CA KRC License ID: 01518685





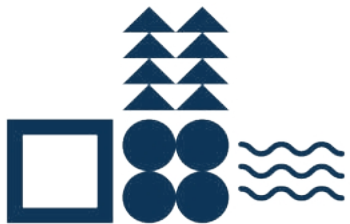
AERIAL

GROSS LEASABLE AREA (GLA)

210,666 SF

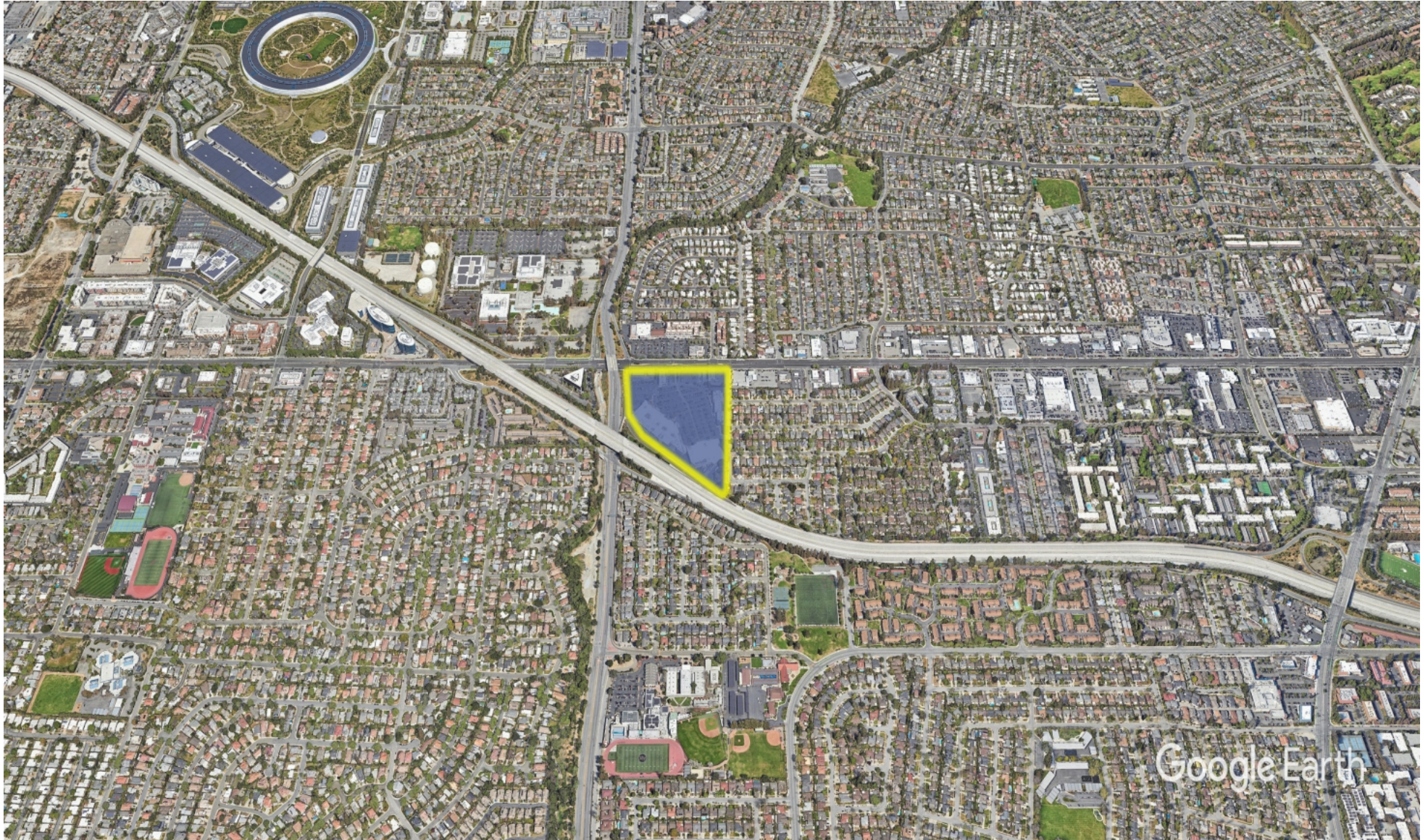
PARKING SPACES

982



Chrystelle Azcona

Leasing Representative | (650) 746-7506 | cazcona@kimcorealty.com



DENSITY AERIAL

Chrystelle Azcona

Leasing Representative | (650) 746-7506 | cazcona@kimcorealty.com



■ Available ■ Potentially Available

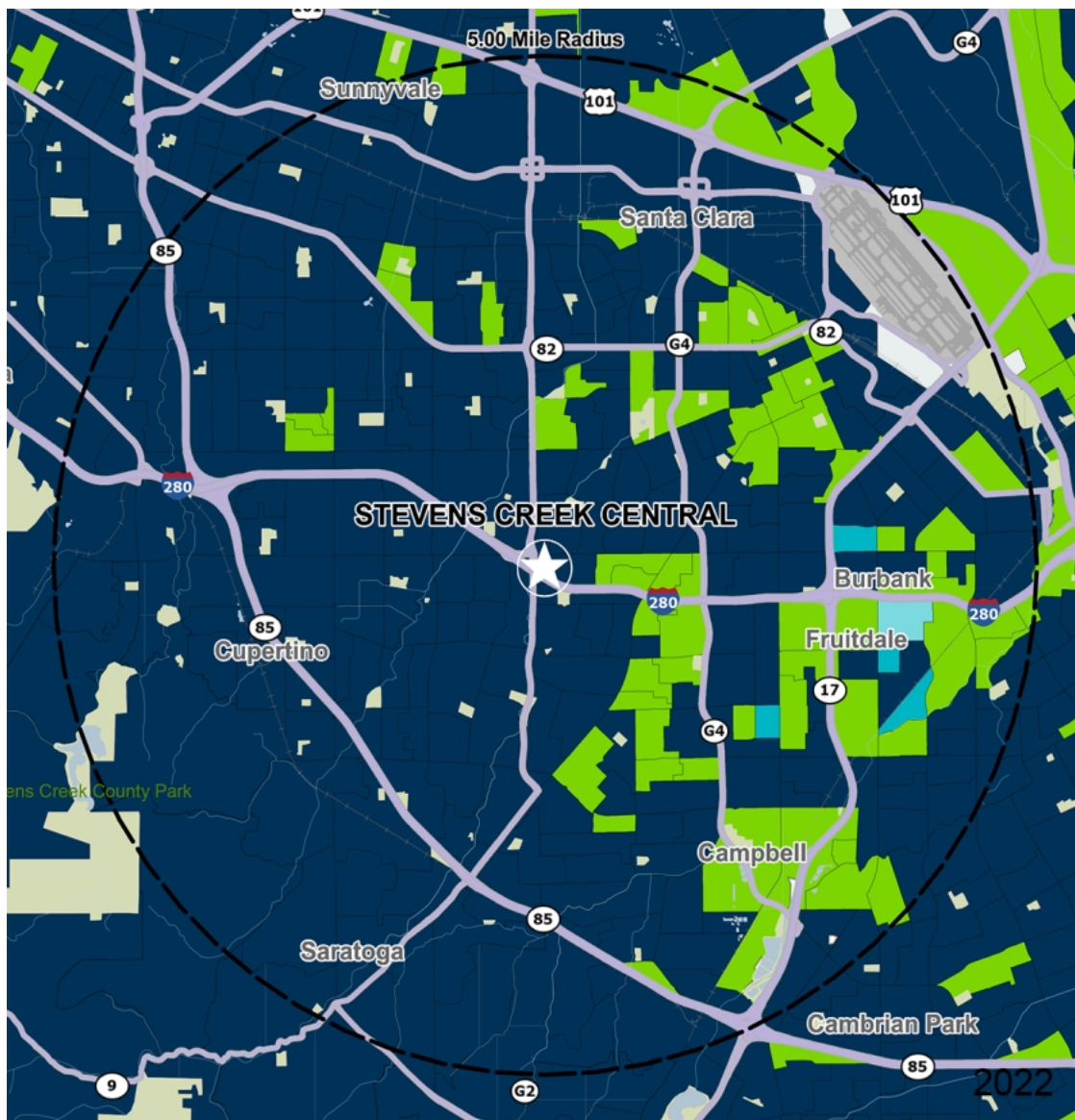


	TENANT	SQ FT
1	T-Mobile	2,584
2	Red Wing Shoes	1,464
3	Kai Japanese Foods	1,420
4	Russian School of Mathematics	3,135
5	Panda Express	2,706
6	AT&T Mobility	3,954
7	Removery	1,564
8	Round Table Pizza	1,425
9	McDonald's	2,927
10	AAA of Northern California, Ne	6,200
11	Bills Cafe	3,518
12	GOLFTEC	2,895
13	The Best Sandwiches	1,376
14	The Little Gym	3,289
15	Lu Construction	3,207
16	OneMain Financial	1,709
17	Wingstop	1,728
18	Nail Salon	1,330
19	Supercuts	1,330
20	Available	4,465
21	Safeway	59,139
22	Pet Food Express	7,172
23	Audio Design	13,626
24	Marshalls	36,139
25	World Market	16,711
26	Total Wine & More	25,653

Disclaimer: This site plan shows the approximate location, square footage, and configuration of the shopping center and adjacent areas, and is only illustrative of the size and relationship of the stores and common areas generally, all of which are subject to change. The showing of any names of tenants, parking spaces, square footage, curb-cuts or traffic controls shall not be deemed to be a representation or warranty that any tenants will be at the shopping center, the square footage is accurate, or that any parking spaces, curb-cuts or traffic controls do or will continue to exist. Moreover, any demographics set forth in this flyer are for illustrative purposes only and shall not be deemed a representation by Landlord or their accuracy. Availability of this property for rent is subject to prior rental or withdrawal of the property from the market at any time without notice.

Chrystelle Azcona

Leasing Representative | (650) 746-7506 | cazcona@kimcorealty.com



by Block Group

Demographics

2022 ESTIMATES	1-MILE	3-MILES	5-MILES
Population	27,268	246,835	517,722
Daytime Pop	20,851	266,352	678,354
Households	9,840	91,677	195,085
Average HH Income	\$206,707	\$198,472	\$199,887
Median HH Income	\$158,392	\$152,552	\$150,514
Per Capita Income	\$74,708	\$73,995	\$75,933

Average Household Income

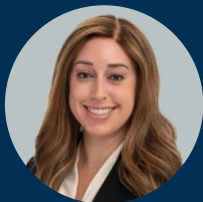
Popstats, 4Q 2022, Trade Area Systems

- \$150K and up
- \$75K - \$100K
- \$100K - \$150K
- \$0K - \$50K



Stevens Creek Central

Stevens Creek Blvd. & LawrenceExpy, San Jose, CA



Chrystelle Azcona

Leasing Representative

(650) 746-7506

cazcona@kimcorealty.com

KRC Property Management I, Inc., a Subsidiary of Kimco Realty®
CA Broker's ID: 01920629 | CA KRC License ID: 01518685