



# 8000 Sunset Strip S.C.

Los Angeles, CA

Los Angeles-Long Beach-Anaheim (CA)



**Todd Buckstein**

Leasing Representative

(949) 252-3852

[tbuckstein@kimcorealty.com](mailto:tbuckstein@kimcorealty.com)

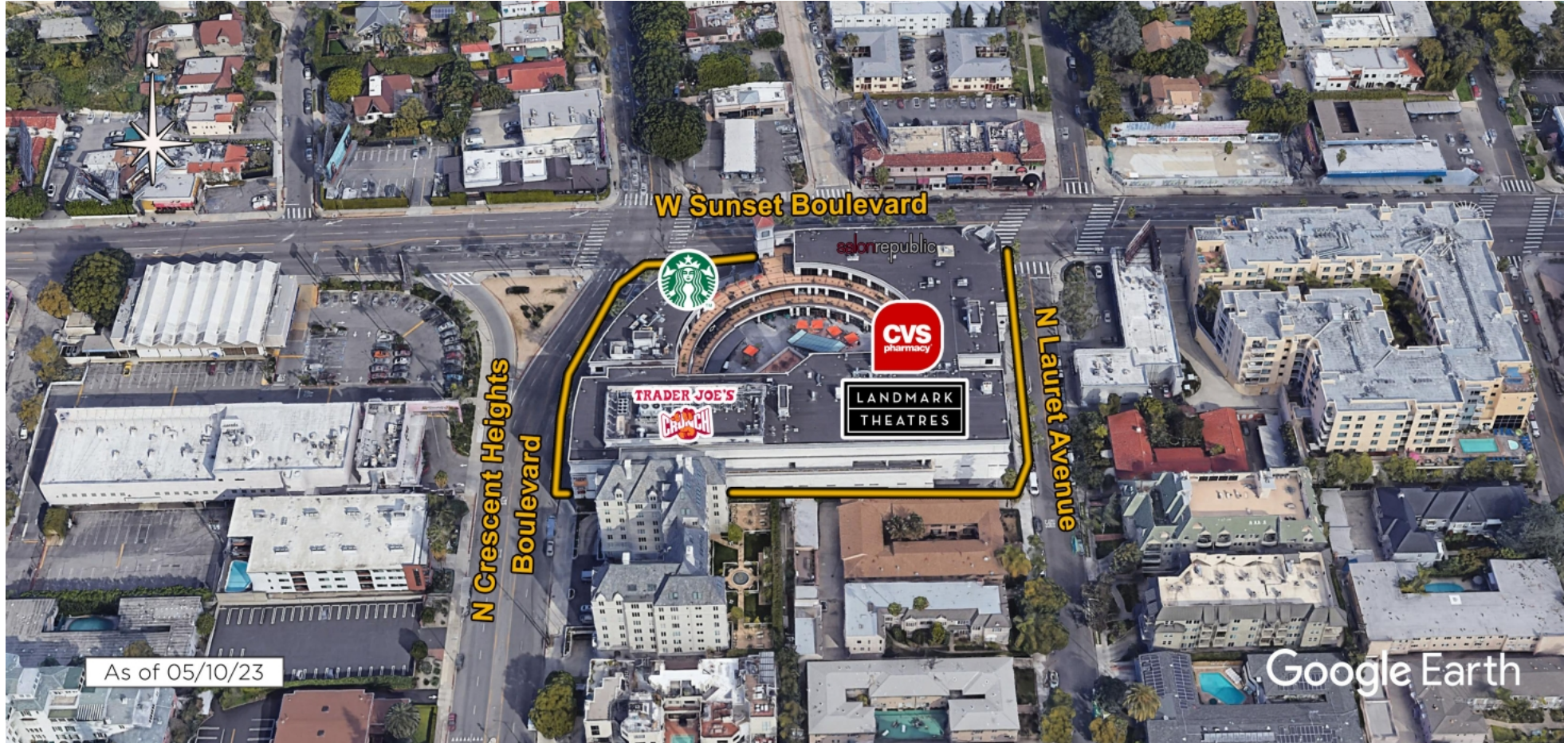
KRC Property Management I, Inc., a Subsidiary of Kimco Realty®  
CA License ID: 01880837 | CA KRC License ID: 01518685



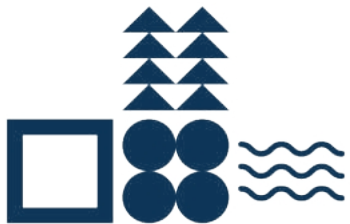
# 8000 Sunset Strip S.C.

Los Angeles, CA

[www.kimcorealty.com/118550](http://www.kimcorealty.com/118550)



AERIAL



GROSS LEASABLE AREA (GLA) 170,756 SF

PARKING SPACES 870

PARKING RATIO 5.09 per 1,000 SF

Todd Buckstein

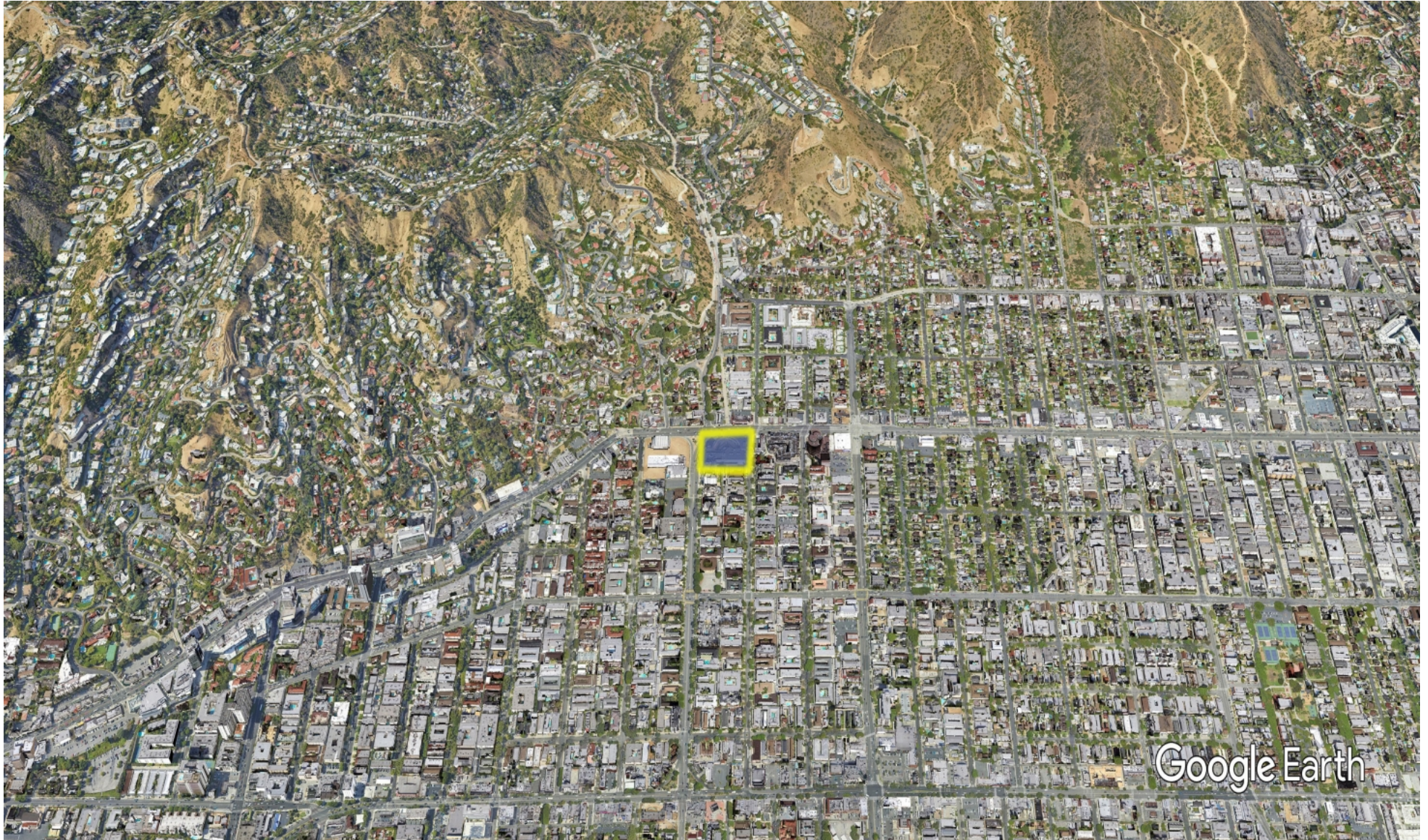
Leasing Representative | (949) 252-3852 | [tbuckstein@kimcorealty.com](mailto:tbuckstein@kimcorealty.com)



# 8000 Sunset Strip S.C.

Los Angeles, CA

[www.kimcorealty.com/118550](http://www.kimcorealty.com/118550)



Google Earth

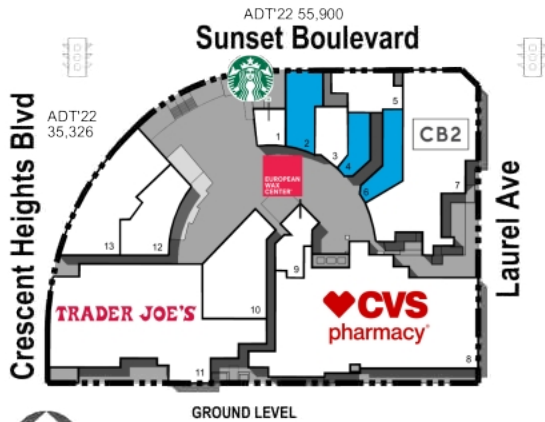
DENSITY AERIAL

**Todd Buckstein**

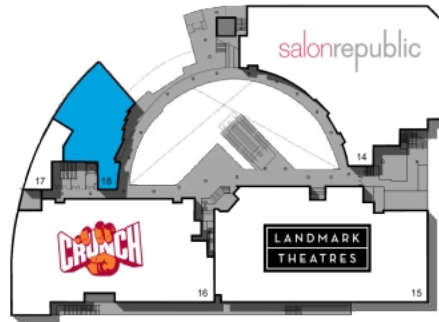
Leasing Representative | (949) 252-3852 | [tbuckstein@kimcorealty.com](mailto:tbuckstein@kimcorealty.com)



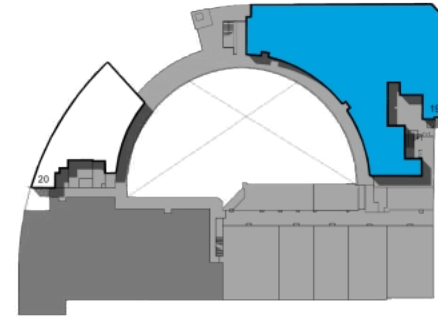
Available



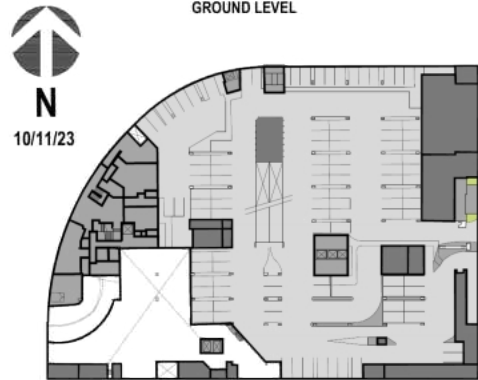
GROUND LEVEL



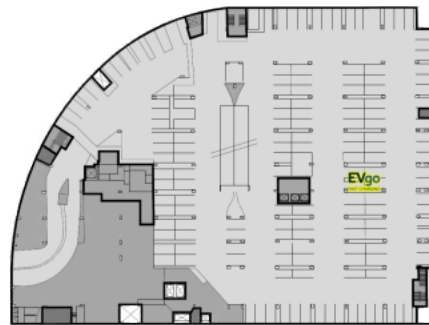
LEVEL 2



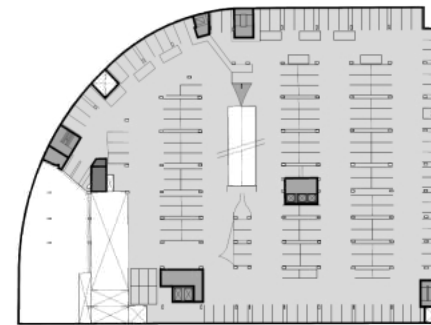
LEVEL 3



PARKING GARAGE - P1



PARKING GARAGE - P2



PARKING GARAGE - P3  
ADDITIONAL PARKING LEVELS P4 & P5 NOT SHOWN

TENANT	SQ FT
1 Starbucks	944
2 Available	1,923
3 Jolo's Mediterranean Grill	1,300
4 Available	1,042
5 AT&T, an Authorized Retailer	1,665
6 Available	1,520
7 CB2	15,096
8 CVS	15,451
9 European Wax Center	1,278
10 Exer Urgent Care	4,357
11 Trader Joe's	13,860
12 BB.Q Chicken	2,571
13 Wokcano Asian Lounge	3,595
14 Salon Republic	18,185
15 Landmark Theatres Sunset	24,693
16 Crunch Fitness	33,329
17 Trademark Beauty	1,221
18 Available (Former Restaurant)	4,834
19 Available	17,247
20 Redpill VR	5,664

Disclaimer: This site plan shows the approximate location, square footage, and configuration of the shopping center and adjacent areas, and is only illustrative of the size and relationship of the stores and common areas generally, all of which are subject to change. The showing of any names of tenants, parking spaces, square footage, curb-cuts or traffic controls shall not be deemed to be a representation or warranty that any tenants will be at the shopping center, the square footage is accurate, or that any parking spaces, curb-cuts or traffic controls do or will continue to exist. Moreover, any demographics set forth in this flyer are for illustrative purposes only and shall not be deemed a representation by Landlord or their accuracy. Availability of this property for rent is subject to prior rental or withdrawal of the property from the market at any time without notice.

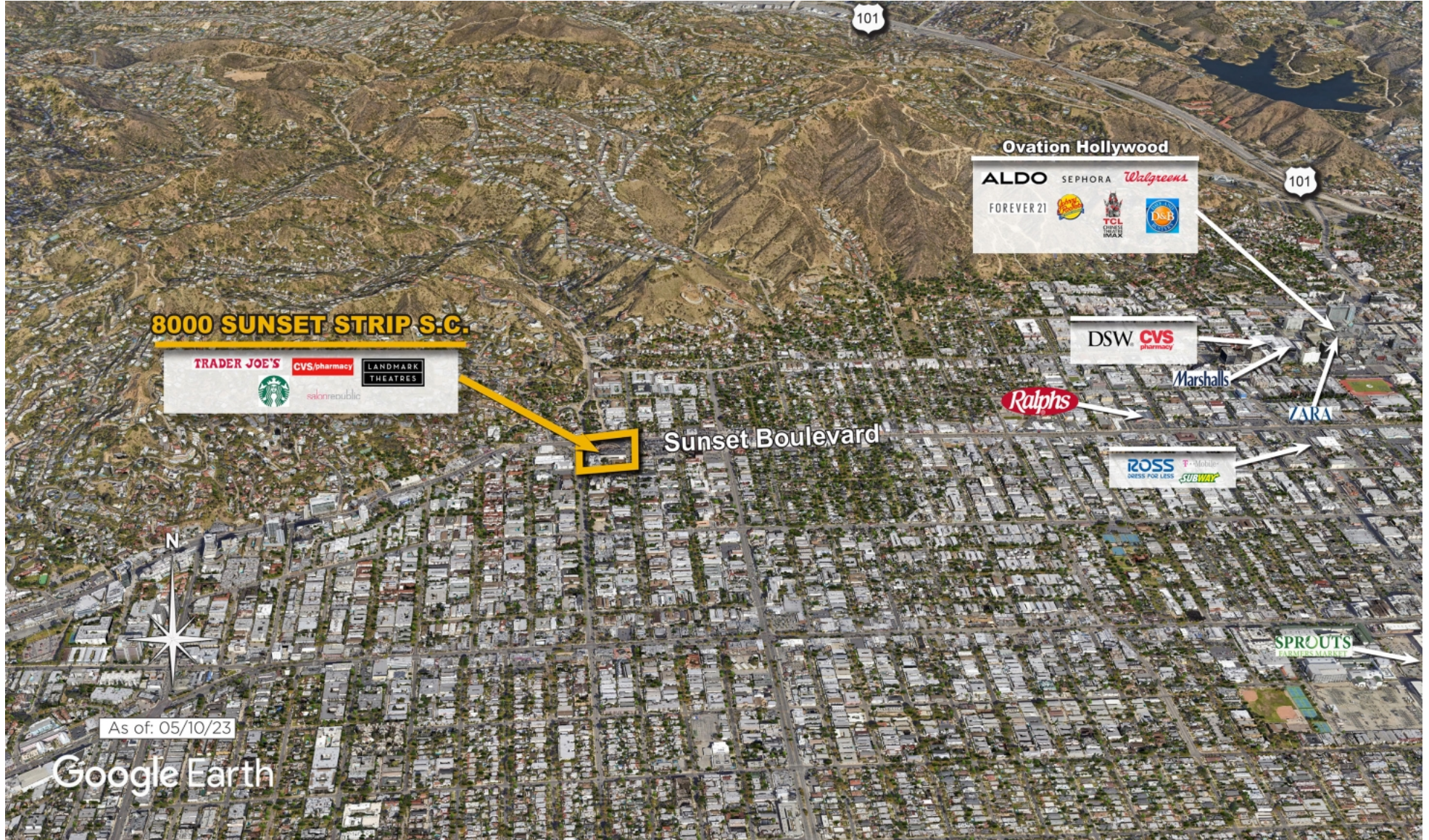
Todd Buckstein

Leasing Representative | (949) 252-3852 | tbuckstein@kimcorealty.com

# 8000 Sunset Strip S.C.

Los Angeles, CA

[www.kimcorealty.com/118550](http://www.kimcorealty.com/118550)

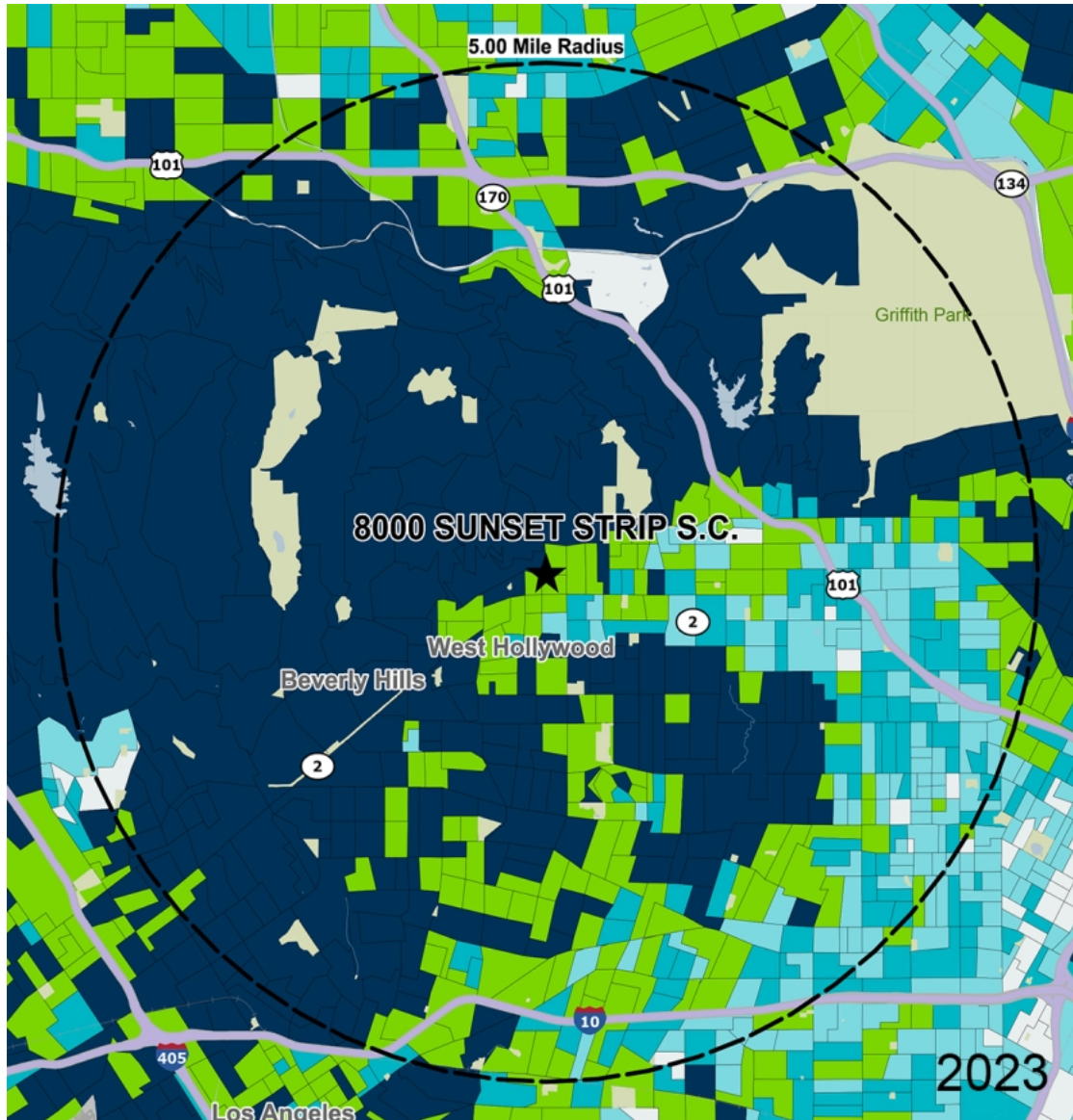


COMPETITION MAP

Todd Buckstein

Leasing Representative | (949) 252-3852 | [tbuckstein@kimcorealty.com](mailto:tbuckstein@kimcorealty.com)





by Block Group

## Demographics

2022 ESTIMATES	1-MILE	3-MILES	5-MILES
Population	39,376	235,917	762,195
Daytime Pop	33,937	316,106	902,620
Households	24,305	124,980	339,504
Average HH Income	\$123,834	\$143,493	\$128,566
Median HH Income	\$83,964	\$88,393	\$78,233
Per Capita Income	\$76,987	\$76,869	\$57,908

## Average Household Income

Popstats, 4Q 2022, Trade Area Systems

- \$150K and up
- \$100K - \$150K
- \$75K - \$100K
- \$50K - \$75K
- \$0K - \$50K



**Todd Buckstein**

Leasing Representative | (949) 252-3852 | tbuckstein@kimcorealty.com

# 8000 Sunset Strip S.C.

Sunset Blvd. & Crescent Height Blvd., Los Angeles, CA



**Todd Buckstein**

Leasing Representative

(949) 252-3852

[tbuckstein@kimcorealty.com](mailto:tbuckstein@kimcorealty.com)

KRC Property Management I, Inc., a Subsidiary of Kimco Realty®  
CA License ID: 01880837 | CA KRC License ID: 01518685