



# Camelback Miller Plaza

Scottsdale, AZ

Phoenix-Mesa-Chandler (AZ)



**Zach Blatteis**  
Leasing Representative  
(949) 209-5161  
zblatteis@kimcorealty.com

KRC Property Management I, Inc., a Subsidiary of Kimco Realty®  
CA License ID: 01768718 | CA KRC License ID: 01518685





As of 03/20/24

Google Earth

AERIAL



GROSS LEASABLE AREA (GLA)

144,427 SF

PARKING SPACES

688

Zach Blatteis

Leasing Representative | (949) 209-5161 | zblatteis@kimcorealty.com



DENSITY AERIAL

Zach Blatteis

Leasing Representative | (949) 209-5161 | [zblatteis@kimcorealty.com](mailto:zblatteis@kimcorealty.com)



Available



| TENANT                            | SQ FT  |
|-----------------------------------|--------|
| 1 TJ Maxx                         | 34,255 |
| 2 Petsmart                        | 28,033 |
| 3 Pedal Jetz E-Bikes              | 2,355  |
| 4 Milan Laser Hair Removal        | 1,373  |
| 5 Xanderlyn Salon & Beauty Loung  | 1,683  |
| 6 Barre3                          | 2,100  |
| 8 Toothology                      | 1,400  |
| 9 Basic Training                  | 3,960  |
| 10 Sprout's                       | 28,500 |
| 11 Available                      | 1,800  |
| 12 Water Mart                     | 1,140  |
| 13 Kids & Family Barber Shop      | 757    |
| 14 Thai Royal Massage             | 1,535  |
| 16 Zipp's Sports Grill            | 3,864  |
| 17 Camelback Medical Center       | 2,393  |
| 18 Pony Express Cleaners          | 2,857  |
| 19 Clancy's Pub                   | 2,250  |
| 20 Clancy's Pub                   | 1,500  |
| 21 Keep It Cut                    | 1,774  |
| 22 For Nails Only                 | 1,200  |
| 23 Pizza Hut                      | 1,450  |
| 24 Pasta Brioni                   | 5,400  |
| 25 Wok N Roll                     | 2,800  |
| 26 Starbucks                      | 2,573  |
| 27 Wilson Camera Digital Lab & Po | 1,250  |
| 28 Edible Arrangements            | 1,000  |
| 29 Golden Thread Alterations      | 1,000  |
| 30 Luxe Nail Bar                  | 3,000  |
| 31 Brighton Jewelry               | 1,225  |

Disclaimer: This site plan shows the approximate location, square footage, and configuration of the shopping center and adjacent areas, and is only illustrative of the size and relationship of the stores and common areas generally, all of which are subject to change. The showing of any names of tenants, parking spaces, square footage, curb-cuts or traffic controls shall not be deemed to be a representation or warranty that any tenants will be at the shopping center, the square footage is accurate, or that any parking spaces, curb-cuts or traffic controls do or will continue to exist. Moreover, any demographics set forth in this flyer are for illustrative purposes only and shall not be deemed a representation by Landlord or their accuracy. Availability of this property for rent is subject to prior rental or withdrawal of the property from the market at any time without notice.

Zach Blatteis

Leasing Representative | (949) 209-5161 | zblatteis@kimcorealty.com



# Camelback Miller Plaza

Scottsdale, AZ

[www.kimcorealty.com/118610](http://www.kimcorealty.com/118610)

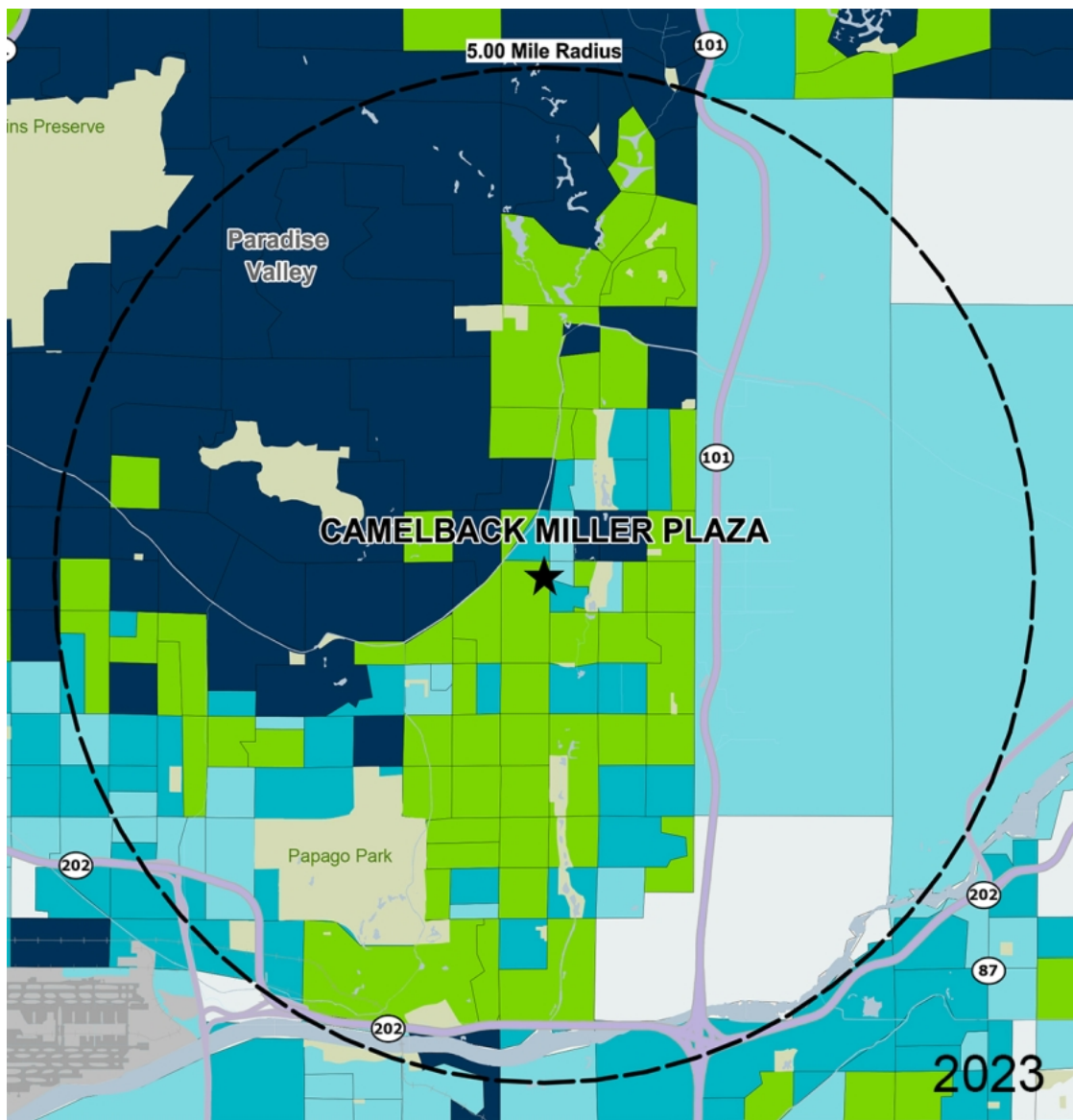


COMPETITION MAP

Zach Blatteis

Leasing Representative | (949) 209-5161 | [zblatteis@kimcorealty.com](mailto:zblatteis@kimcorealty.com)





by Block Group

## Demographics

| 2022 ESTIMATES    | 1-MILE    | 3-MILES   | 5-MILES   |
|-------------------|-----------|-----------|-----------|
| Population        | 18,608    | 93,956    | 189,747   |
| Daytime Pop       | 42,882    | 132,051   | 294,145   |
| Households        | 10,915    | 45,776    | 88,916    |
| Average HH Income | \$122,621 | \$126,439 | \$124,951 |
| Median HH Income  | \$76,801  | \$84,778  | \$79,504  |
| Per Capita Income | \$71,973  | \$61,781  | \$58,808  |

## Average Household Income

Popstats, 4Q 2022, Trade Area Systems

- \$150K and up
- \$100K - \$150K
- \$75K - \$100K
- \$50K - \$75K
- \$0K - \$50K



# Camelback Miller Plaza

N Miller Rd. & E Camelback Rd., Scottsdale, AZ



**Zach Blatteis**

Leasing Representative

(949) 209-5161

[zblatteis@kimcorealty.com](mailto:zblatteis@kimcorealty.com)

---

KRC Property Management I, Inc., a Subsidiary of Kimco Realty®  
CA License ID: 01768718 | CA KRC License ID: 01518685