



Gateway Plaza

Fremont, CA

San Francisco-Oakland-Berkeley (CA)



Chrystelle Azcona

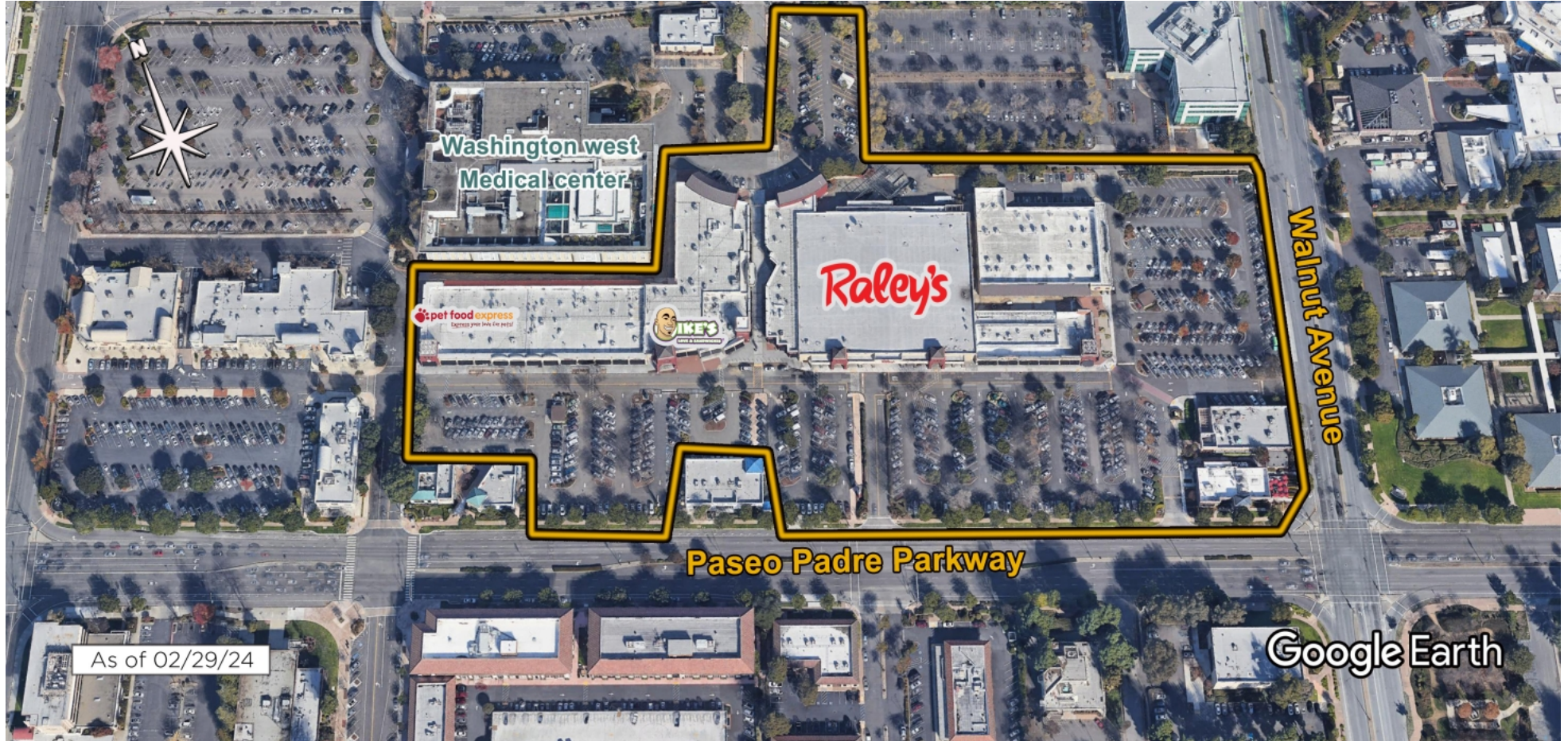
Leasing Representative

(650) 746-7506

cazcona@kimcorealty.com

KRC Property Management I, Inc., a Subsidiary of Kimco Realty®
CA Broker's ID: 01920629 | CA KRC License ID: 01518685





AERIAL



GROSS LEASABLE AREA (GLA)

192,104 SF

PARKING SPACES

774

Chrystelle Azcona

Leasing Representative | (650) 746-7506 | cazcona@kimcorealty.com



DENSITY AERIAL

Chrystelle Azcona

Leasing Representative | (650) 746-7506 | cazcona@kimcorealty.com



Available



Chrystelle Azcona

Leasing Representative | (650) 746-7506 | cazcona@kimcorealty.com

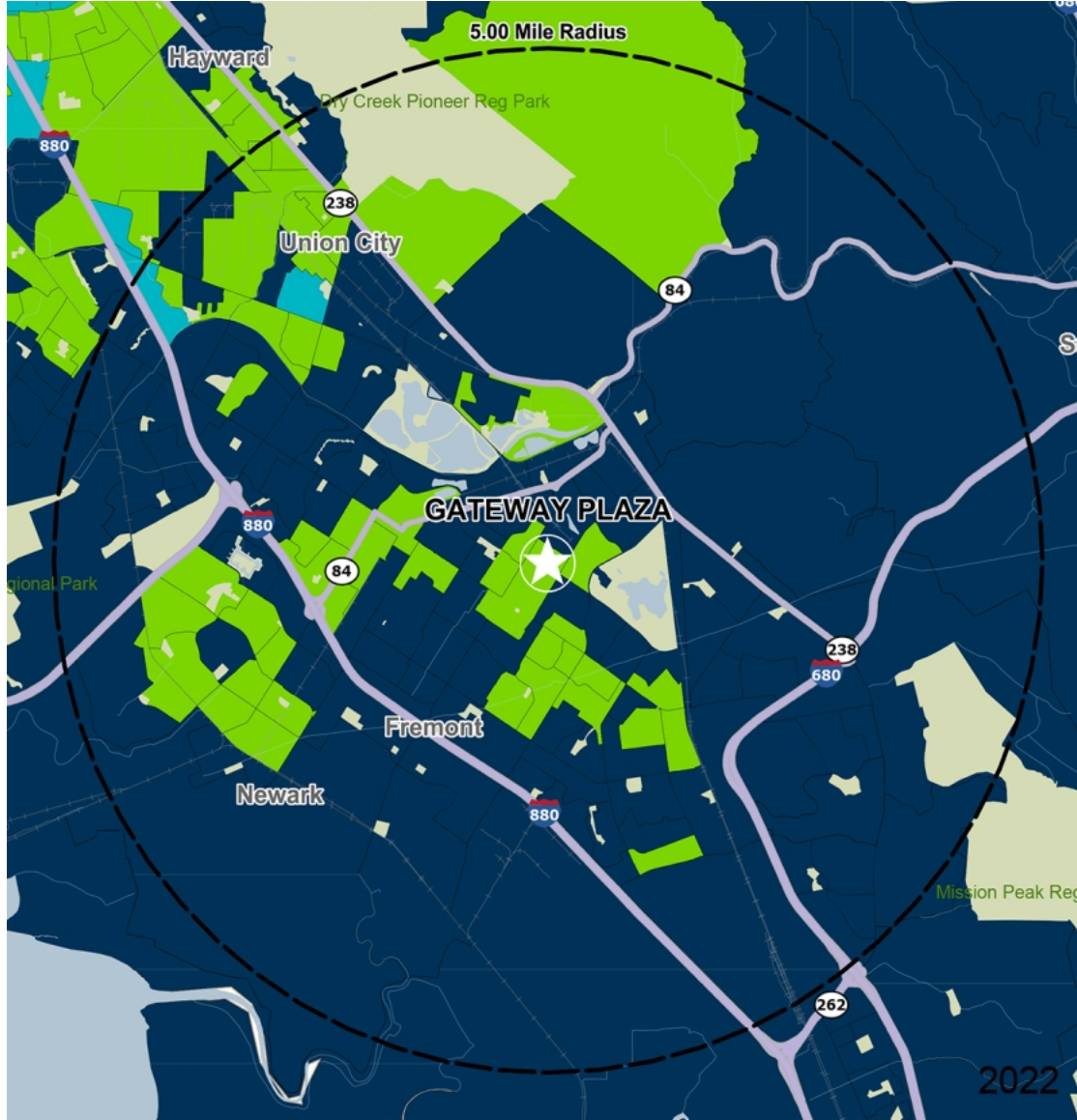
TENANT	SQ FT	TENANT	SQ FT	TENANT	SQ FT
1 Pet Food Express	6,304	13 Miki Bistro	2,368	26 H&R Block	1,384
2 Massage Envy	2,841	14 Available	861	27 Vitality Bowls	1,024
3 Inchin's Bamboo Garden	4,548	15 Flash 2 Unlock	160	28 Finesse Family Dental	1,147
4 Pho Mama	2,083	17 Armed Forces Recruiting Center	4,175	29 Postal Annex III	1,100
5 La Pinata 5	4,675	18 Expression8 Art Gallery	1,284	30 Cadence Academy of Music	1,948
6 Manyavar Mohey	2,790	19 Essy's Tailoring	640	31 Discover Chiropractic	1,476
7 Mylapore Express	5,040	20 Beauty Plus Boutique	2,110	32 Frodo Joe's Petit Cafe	1,499
8 State Bank of India California	4,321	21 Dosa Hut	1,130	33 Best Brains	913
9 GoChaatzz	2,635	22 Available	572	34 Available	26,550
10 Poppy Bank	1,668	23 Son of a Jeweler	1,400	35 Available (Former Restaurant)	6,760
11 Cinelounge Fremont 7	25,988	24 Raley's	62,418	36 The Counter	2,816
12 Ikes Love & Sandwiches	1,131	25 Mood Nail Lounge	1,911	37 Angry Chickz	2,434

Disclaimer: This site plan shows the approximate location, square footage, and configuration of the shopping center and adjacent areas, and is only illustrative of the size and relationship of the stores and common areas generally, all of which are subject to change. The showing of any names of tenants, parking spaces, square footage, curb-cuts or traffic controls shall not be deemed to be a representation or warranty that any tenants will be at the shopping center, the square footage is accurate, or that any parking spaces, curb-cuts or traffic controls do or will continue to exist. Moreover, any demographics set forth in this flyer are for illustrative purposes only and shall not be deemed a representation by Landlord or their accuracy. Availability of this property for rent is subject to prior rental or withdrawal of the property from the market at any time without notice.

Chrystelle Azcona

Leasing Representative | (650) 746-7506 | cazcona@kimcorealty.com





by Block Group

Demographics

2022 ESTIMATES	1-MILE	3-MILES	5-MILES
Population	35,549	175,834	303,403
Daytime Pop	48,172	167,365	307,791
Households	13,374	59,535	98,694
Average HH Income	\$157,562	\$171,177	\$175,582
Median HH Income	\$137,207	\$145,078	\$147,459
Per Capita Income	\$59,841	\$58,314	\$57,405

Average Household Income

Popstats, 4Q 2022, Trade Area Systems

- \$150K and up
- \$75K - \$100K
- \$100K - \$150K
- \$50K - \$75K
- \$0K - \$50K



Chrystelle Azcona

Leasing Representative | (650) 746-7506 | cazcona@kimcorealty.com

Gateway Plaza

Paseo Padre Pkwy & Walnut Ave., Fremont, CA



Chrystelle Azcona

Leasing Representative

(650) 746-7506

cazcona@kimcorealty.com

KRC Property Management I, Inc., a Subsidiary of Kimco Realty®
CA Broker's ID: 01920629 | CA KRC License ID: 01518685