



Queen Anne Marketplace

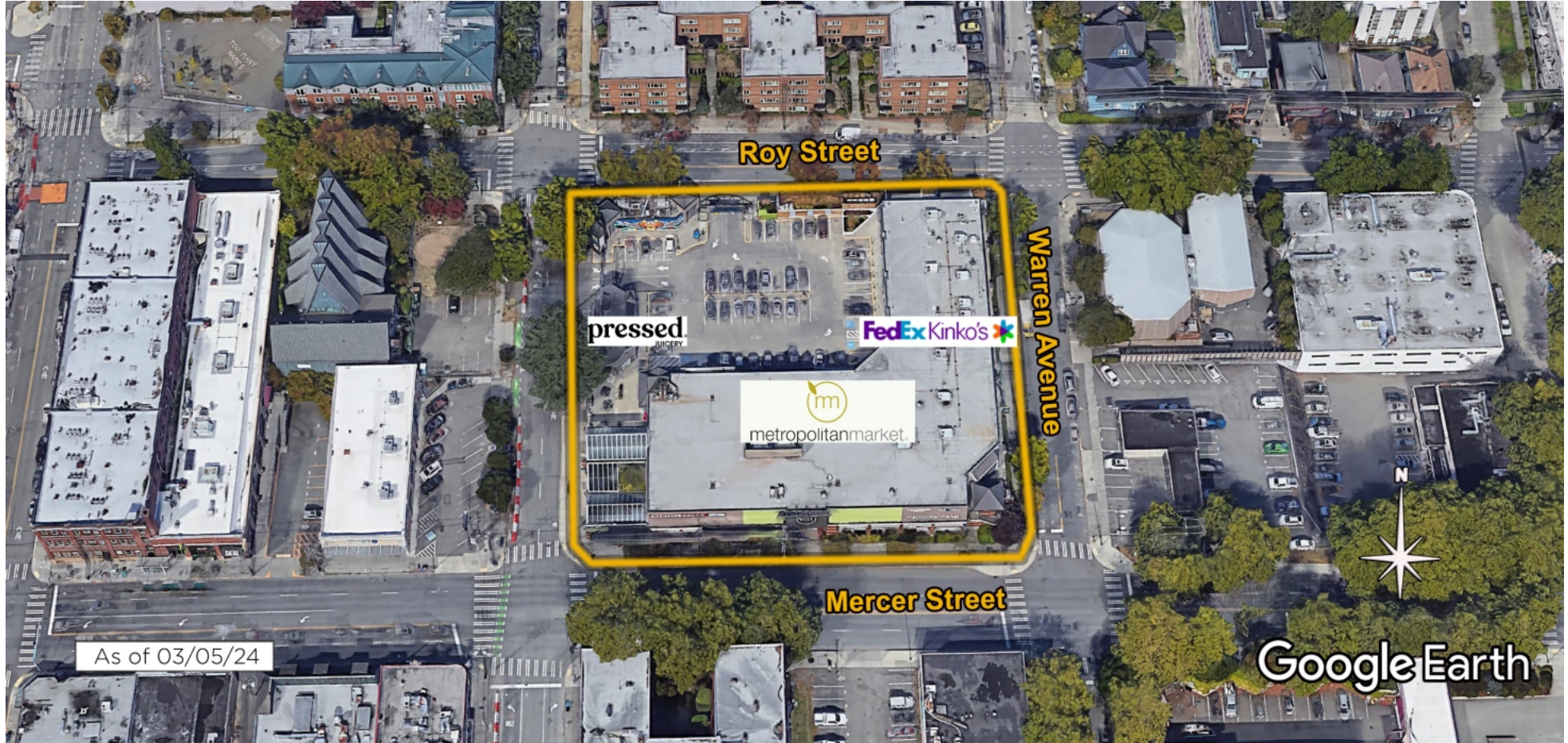
Seattle, WA

Seattle-Tacoma-Bellevue (WA)



Kristina Burmeister
Leasing Representative
(425) 641-9718
kburmeister@kimcorealty.com





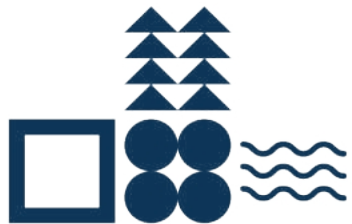
AERIAL

GROSS LEASABLE AREA (GLA)

81,053 SF

PARKING SPACES

74



Kristina Burmeister

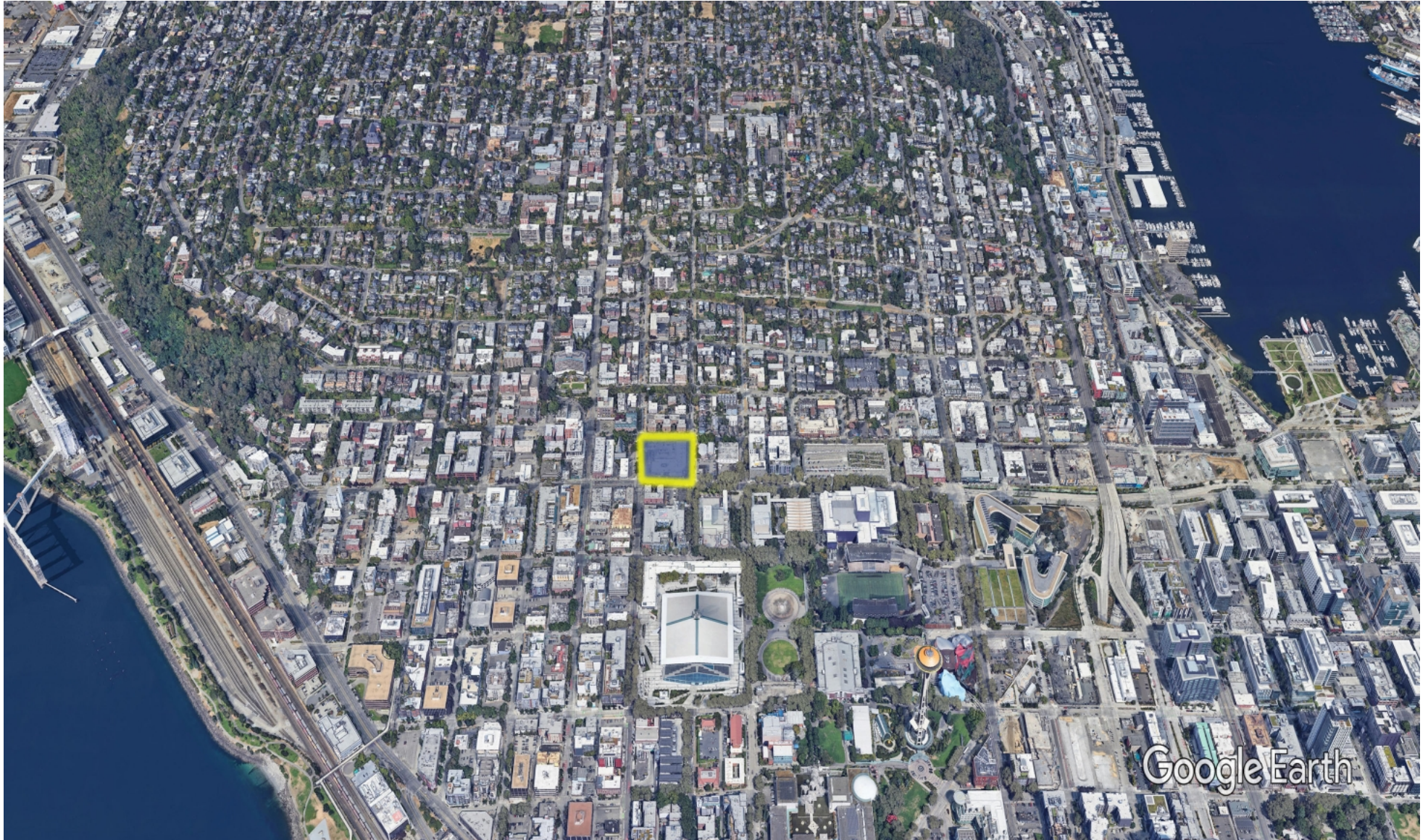
Leasing Representative | (425) 641-9718 | kburmeister@kimcorealty.com



Queen Anne Marketplace

Seattle, WA

www.kimcorealty.com/120290



DENSITY AERIAL

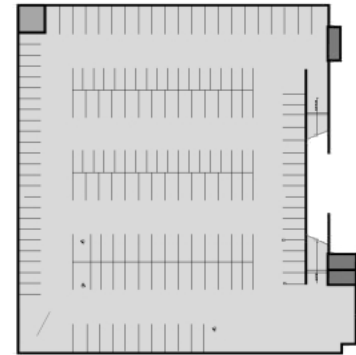
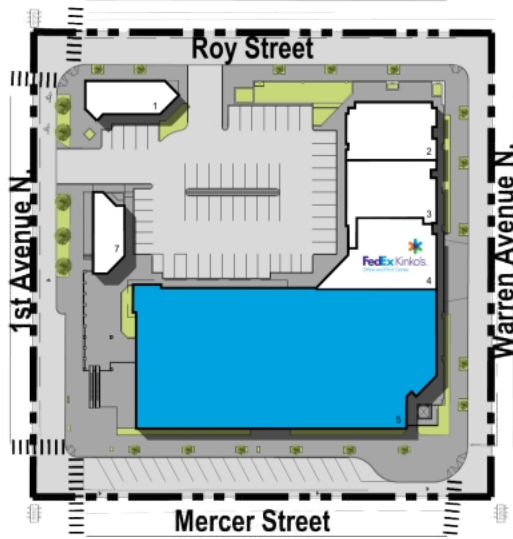
Kristina Burmeister

Leasing Representative | (425) 641-9718 | kburmeister@kimcorealty.com



Available

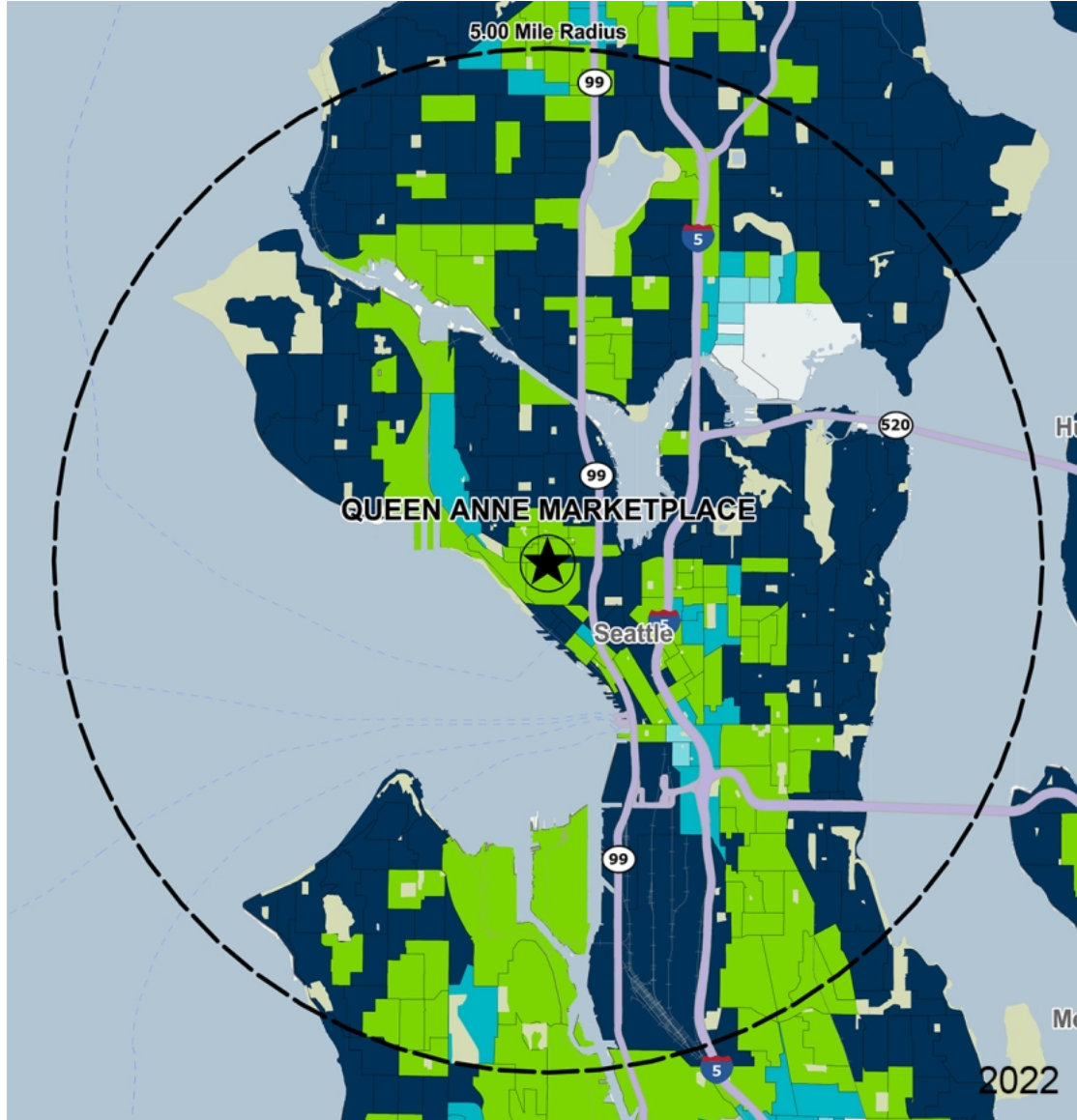
| | TENANT | SQ FT |
|----|--------------------------------|--------|
| 1 | Yummy Teriyaki | 1,498 |
| 2 | Dentists of Queen Anne | 2,388 |
| 3 | Mercer Street Veterinary [...] | 2,655 |
| 4 | FedEx Kinko's | 3,608 |
| 5 | Available | 19,569 |
| 7 | Pressed | 961 |
| 8 | Metropolitan Market | 48,350 |
| 9 | Studio4Brow | 825 |
| 10 | Compass GC | 472 |
| 11 | Top Nails | 634 |



Disclaimer: This site plan shows the approximate location, square footage, and configuration of the shopping center and adjacent areas, and is only illustrative of the size and relationship of the stores and common areas generally, all of which are subject to change. The showing of any names of tenants, parking spaces, square footage, curb-cuts or traffic controls shall not be deemed to be a representation or warranty that any tenants will be at the shopping center, the square footage is accurate, or that any parking spaces, curb-cuts or traffic controls do or will continue to exist. Moreover, any demographics set forth in this flyer are for illustrative purposes only and shall not be deemed a representation by Landlord or their accuracy. Availability of this property for rent is subject to prior rental or withdrawal of the property from the market at any time without notice.

Kristina Burmeister

Leasing Representative | (425) 641-9718 | kburmeister@kimcorealty.com



by Block Group

Demographics

| 2022 ESTIMATES | 1-MILE | 3-MILES | 5-MILES |
|-------------------|-----------|-----------|-----------|
| Population | 52,115 | 264,682 | 499,037 |
| Daytime Pop | 91,313 | 516,477 | 773,658 |
| Households | 34,789 | 149,796 | 256,174 |
| Average HH Income | \$152,497 | \$146,404 | \$153,785 |
| Median HH Income | \$118,964 | \$109,636 | \$113,806 |
| Per Capita Income | \$103,617 | \$85,367 | \$80,615 |

Average Household Income

Popstats, 4Q 2022, Trade Area Systems

- \$150K and up
- \$100K - \$150K
- \$75K - \$100K
- \$50K - \$75K
- \$0K - \$50K



Kristina Burmeister

Leasing Representative | (425) 641-9718 | kburmeister@kimcorealty.com

Queen Anne Marketplace

Mercer St. & 1st Ave., Seattle, WA



Kristina Burmeister
Leasing Representative
(425) 641-9718
kburmeister@kimcorealty.com