



Woodbury Common

Woodbury, NY

New York-Newark-Jersey City (NY-NJ-PA)



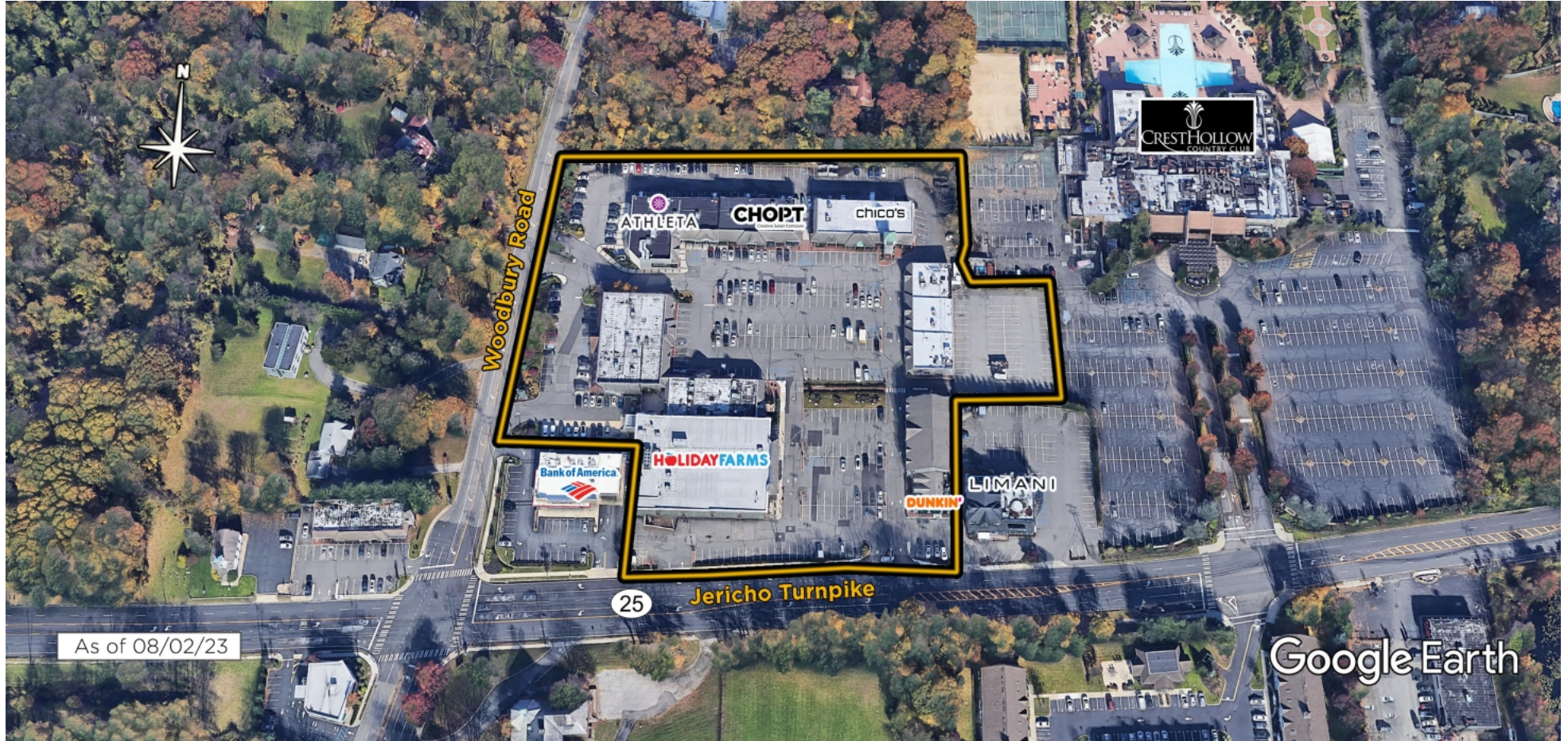
Ian Zimmerman

Leasing Representative

(516) 869-2639

izimmerman@kimcorealty.com





AERIAL



GROSS LEASABLE AREA (GLA)

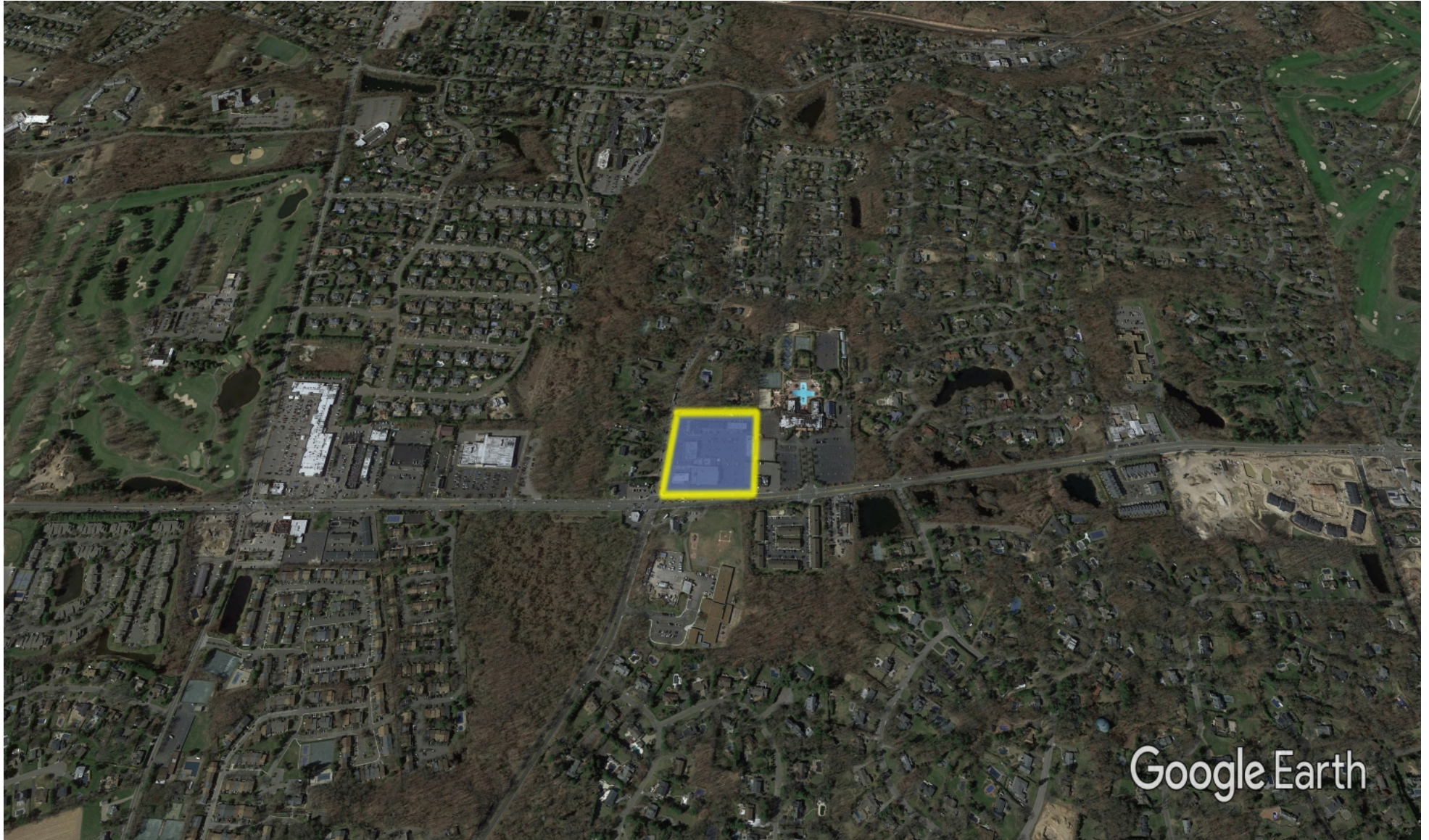
85,658 SF

PARKING SPACES

377

Ian Zimmerman

Leasing Representative | (516) 869-2639 | izimmerman@kimcorealty.com



DENSITY AERIAL

Ian Zimmerman

Leasing Representative | (516) 869-2639 | izimmerman@kimcorealty.com



■ Available ■ Non-Controlled

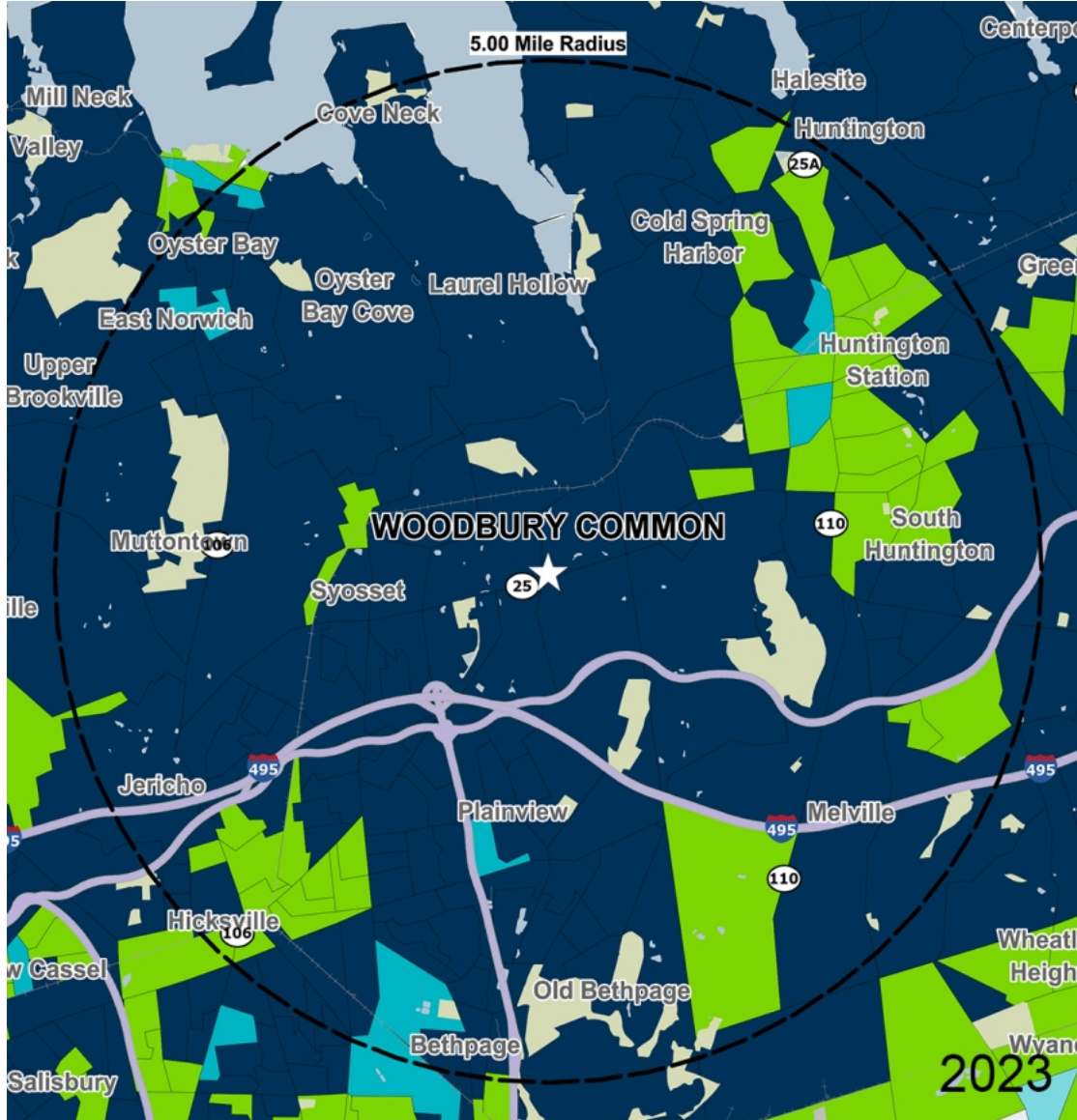


	TENANT	SQ FT
1	Dunkin Donuts	1,338
2	Chip City	750
3	PH7 Nail Salon	900
4	Optics Plus	1,532
5	Woodbury Wine Market	1,100
6	Jewels by David Lloyd	1,000
7	UThai Bistro	1,000
8	Available	1,550
9	Pokeworks	1,250
10	Blue Mercury	1,750
11	Krinti	2,000
12	Chico's	5,000
13	Kate Brayman DDS	1,250
14	Chop't	2,500
15	Twenty5A	2,500
16	Available	1,500
17	Compass	2,000
18	Athleta	4,617
19	Available	3,000
20	Available	2,900
21	StretchLab	1,491
22	Dozo Dozo	2,280
23	Available	3,000
24	Available	1,200
25	Lazer Away	2,010
26	Bond Vet	3,000
27	Cottage Pharmacy & Surgical	7,400
29	The Granola Bar	2,500
31	Dirty Taco & Tequila	3,540
32	Available	19,800

Disclaimer: This site plan shows the approximate location, square footage, and configuration of the shopping center and adjacent areas, and is only illustrative of the size and relationship of the stores and common areas generally, all of which are subject to change. The showing of any names of tenants, parking spaces, square footage, curb-cuts or traffic controls shall not be deemed to be a representation or warranty that any tenants will be at the shopping center, the square footage is accurate, or that any parking spaces, curb-cuts or traffic controls do or will continue to exist. Moreover, any demographics set forth in this flyer are for illustrative purposes only and shall not be deemed a representation by Landlord or their accuracy. Availability of this property for rent is subject to prior rental or withdrawal of the property from the market at any time without notice.

Ian Zimmerman

Leasing Representative | (516) 869-2639 | izimmerman@kimcorealty.com



by Block Group

Demographics

2022 ESTIMATES	1-MILE	3-MILES	5-MILES
Population	6,089	63,942	202,623
Daytime Pop	12,457	110,176	320,275
Households	2,007	21,550	69,415
Average HH Income	\$263,215	\$216,390	\$182,766
Median HH Income	\$177,490	\$159,472	\$137,980
Per Capita Income	\$94,145	\$74,391	\$63,454

Average Household Income

Popstats, 4Q 2022, Trade Area Systems

- \$150K and up
- \$100K - \$150K
- \$75K - \$100K
- \$50K - \$75K
- \$0K - \$50K



Woodbury Common

Jericho Tpke. & Woodbury Rd., Woodbury, NY



Ian Zimmerman

Leasing Representative

(516) 869-2639

izimmerman@kimcorealty.com