



Woodbury Common

Woodbury, NY

New York-Newark-Jersey City (NY-NJ-PA)



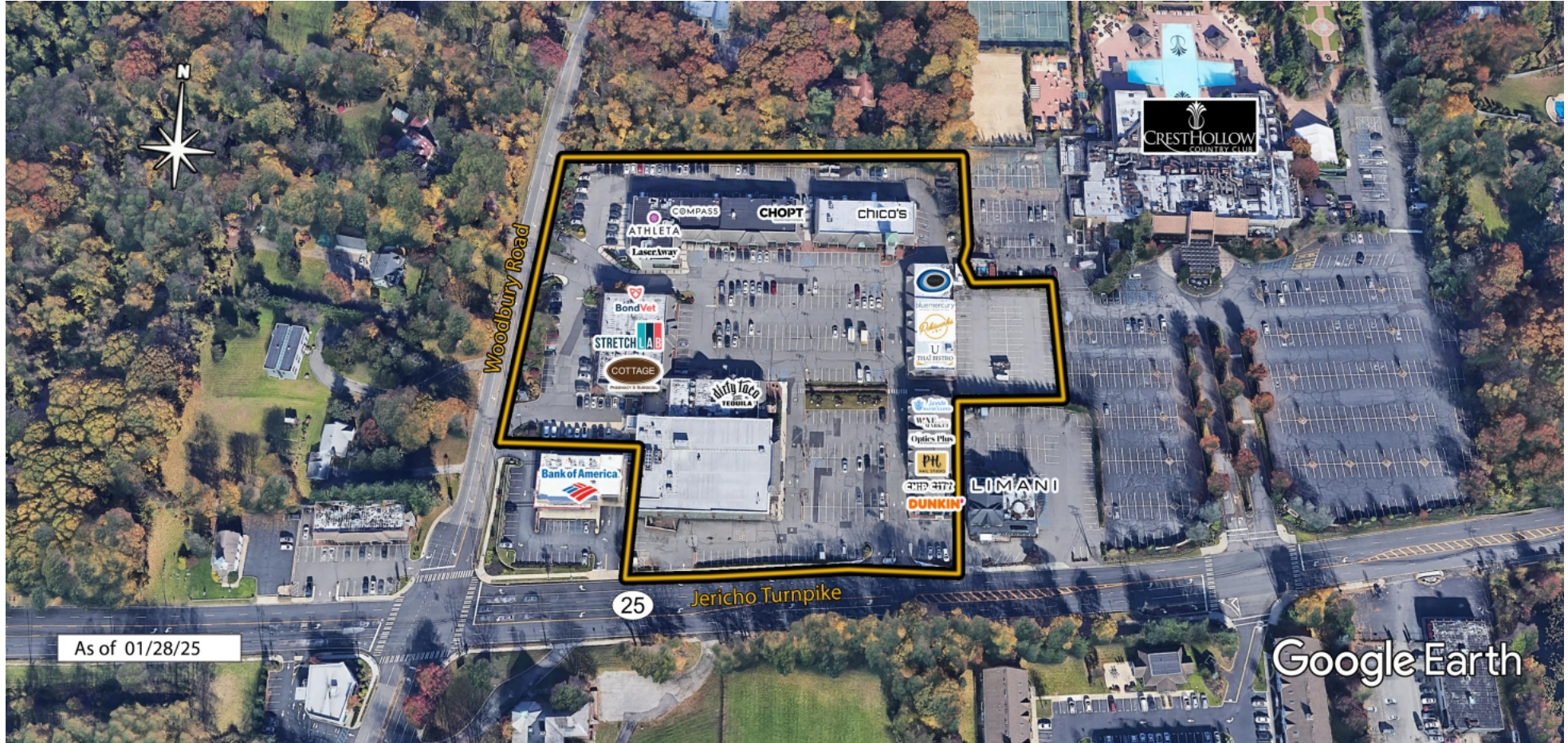
Ian Zimmerman

Leasing Representative

(516) 869-2639

izimmerman@kimcorealty.com





AERIAL



GROSS LEASABLE AREA (GLA)

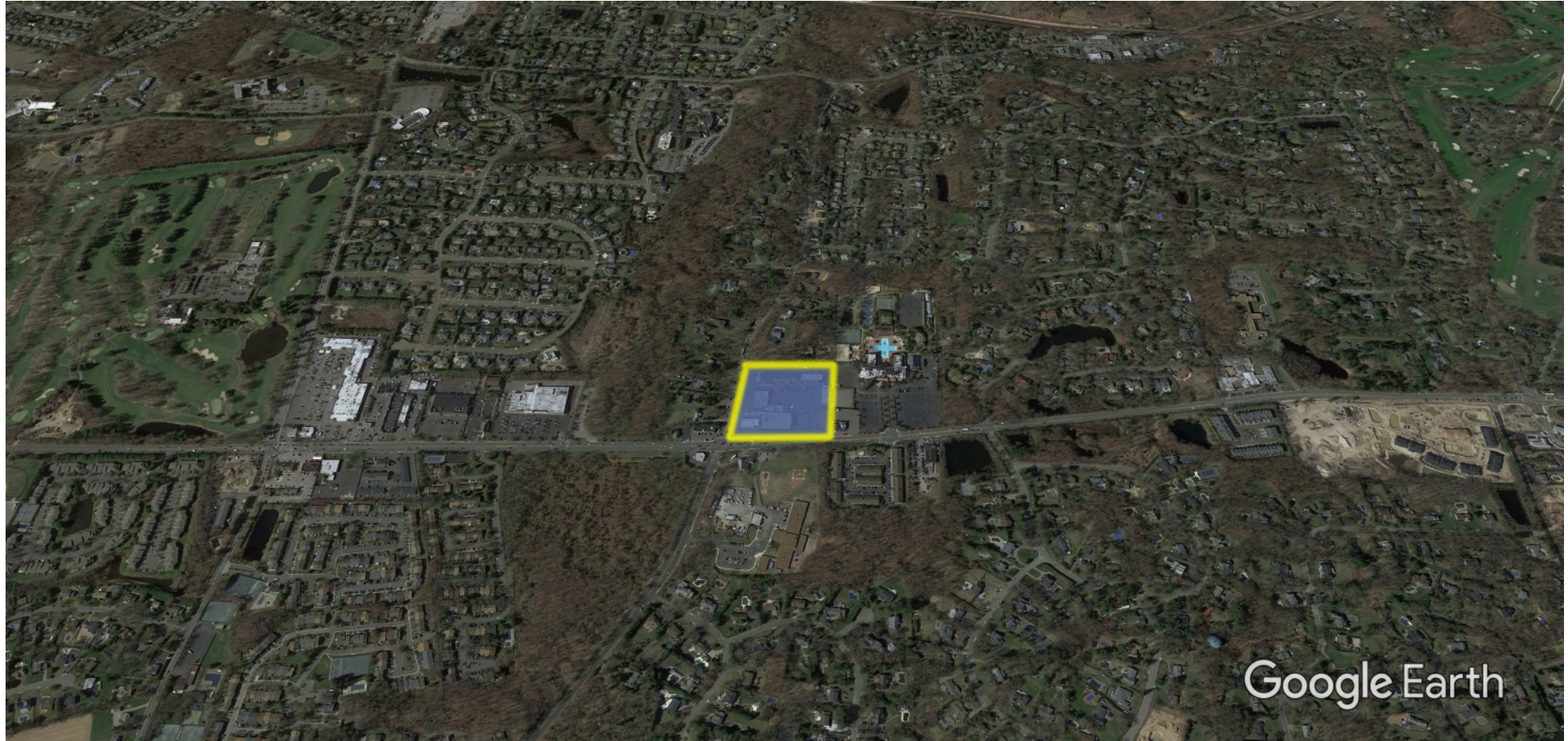
85,722 SF

PARKING SPACES

377

Ian Zimmerman

Leasing Representative | (516) 869-2639 | izimmerman@kimcorealty.com



DENSITY AERIAL



Property Overview

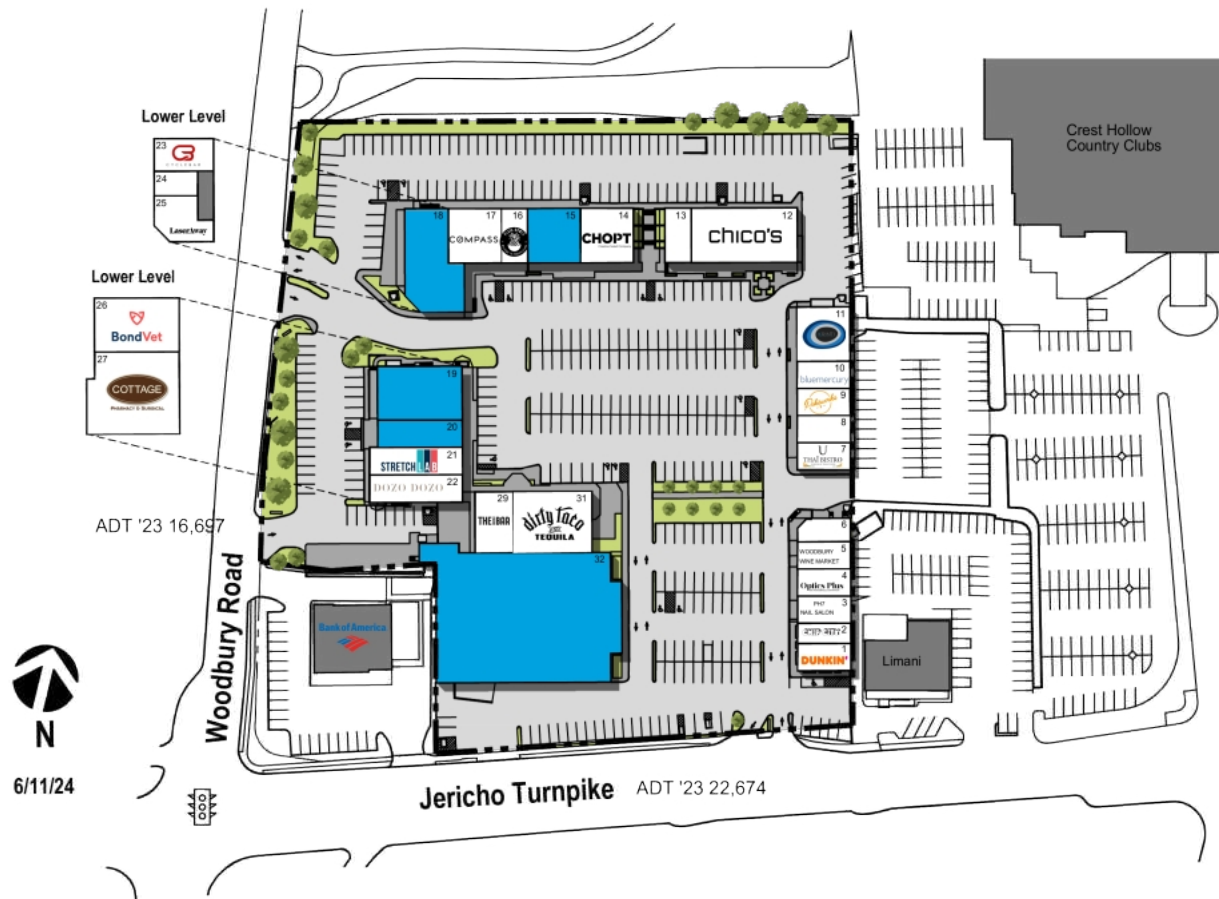
Woodbury Common has become a legend in retailing. Part of the attraction is its perfect location at Jericho Turnpike and Woodbury Road, the crossroads for Nassau and Suffolk Counties' prestigious North Shore with immediate access to all major highways. Woodbury Common is the home for a remarkable mix of distinctive shops, restaurants and personal services – stylish apparel, skin and hair care, health and fitness, eyewear and more. Woodbury Common proudly boasts well-known and well-respected tenants. Careful design, covered walkways, new lighting, quality construction and attentive maintenance have only enhanced the Common's reputation and appeal.

Ian Zimmerman

Leasing Representative | (516) 869-2639 | izimmerman@kimcorealty.com



Available Non-Controlled

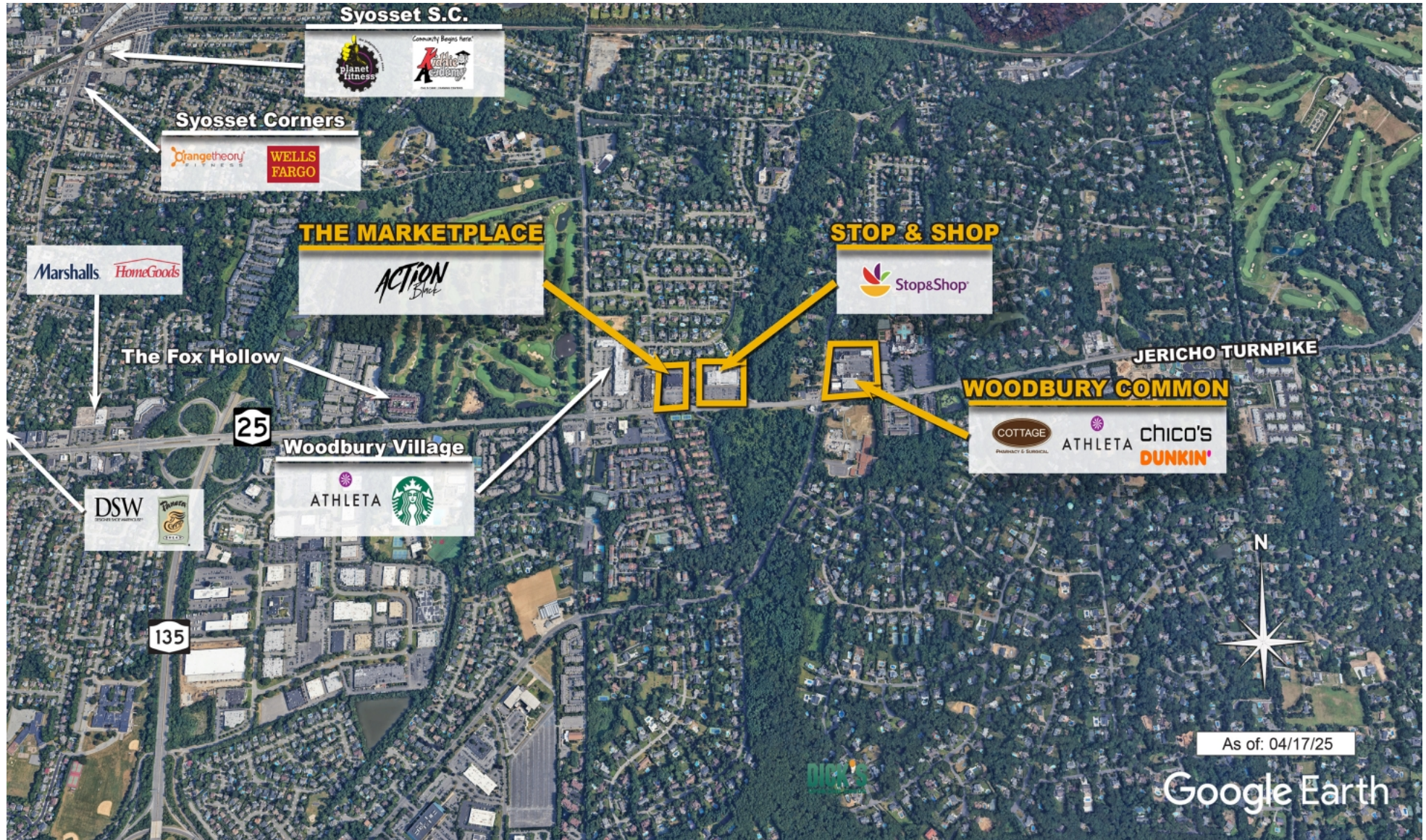


TENANT	SQ FT
1 Dunkin Donuts	1,338
2 Chip City	750
3 PH7 Nail Salon	900
4 Optics Plus	1,532
5 Woodbury Wine Market	1,100
6 Jewels by David Lloyd	1,000
7 UThai Bistro	1,000
8 Milkshake Factory	1,550
9 Pokeworks	1,250
10 Blue Mercury	1,750
11 Krinti	2,000
12 Chico's	5,000
13 Lynna Pillai DMD PLLC	1,250
14 Chop't	2,500
15 Available	2,500
16 Playa Bowls	1,500
17 Compass	2,000
18 Available	4,617
19 Available	3,000
20 Available	2,900
21 StretchLab	1,491
22 Dozo Dozo	2,280
23 CycleBar	3,000
24 Sharkey's Cuts for Kids	1,264
25 Lazer Away	2,010
26 Bond Vet	3,000
27 Cottage Pharmacy & Surgical	7,400
29 The Granola Bar	2,500
31 Dirty Taco & Tequila	3,540
32 Available	19,800

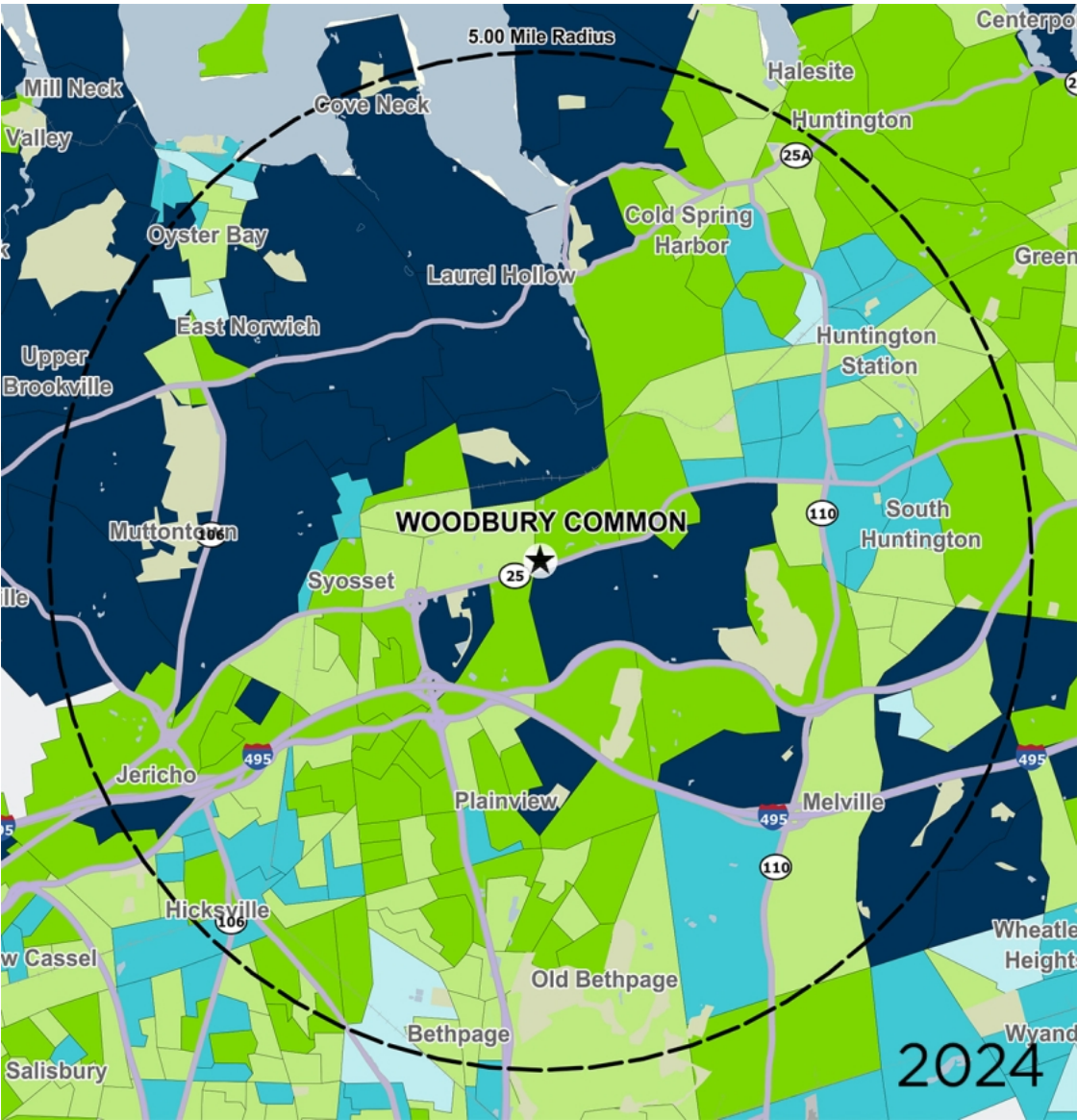
Disclaimer: This site plan shows the approximate location, square footage, and configuration of the shopping center and adjacent areas, and is only illustrative of the size and relationship of the stores and common areas generally, all of which are subject to change. The showing of any names of tenants, parking spaces, square footage, curb-cuts or traffic controls shall not be deemed to be a representation or warranty that any tenants will be at the shopping center, the square footage is accurate, or that any parking spaces, curb-cuts or traffic controls do or will continue to exist. Moreover, any demographics set forth in this flyer are for illustrative purposed only and shall not be deemed a representation by Landlord or their accuracy. Availability of this property for rent is subject to prior rental or withdrawal of the property from the market at any time without notice.

Ian Zimmerman

Leasing Representative | (516) 869-2639 | izimmerman@kimcorealty.com



COMPETITION MAP



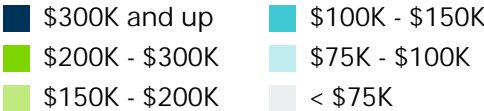
by Block Group

Demographics

2024 ESTIMATES	1-MILE	3-MILES	5-MILES
Population	6,308	65,142	203,027
Daytime Pop	12,424	97,309	278,193
Households	2,066	21,304	68,060
Average HH Income	\$263,939	\$235,416	\$209,264
Median HH Income	\$179,255	\$174,133	\$159,164
Per Capita Income	\$93,687	\$78,599	\$71,024

Average Household Income

Popstats, 4Q 2024, Trade Area Systems



Ian Zimmerman

Leasing Representative | (516) 869-2639 | izimmerman@kimcorealty.com



Woodbury Common

Jericho Tpke. & Woodbury Rd., Woodbury, NY



Ian Zimmerman

Leasing Representative

(516) 869-2639

izimmerman@kimcorealty.com