



Cranberry Commons

Pittsburgh, PA

Pittsburgh (PA)



Michael Reigner
Leasing Representative
(410) 427-4442
mreigner@kimcorealty.com

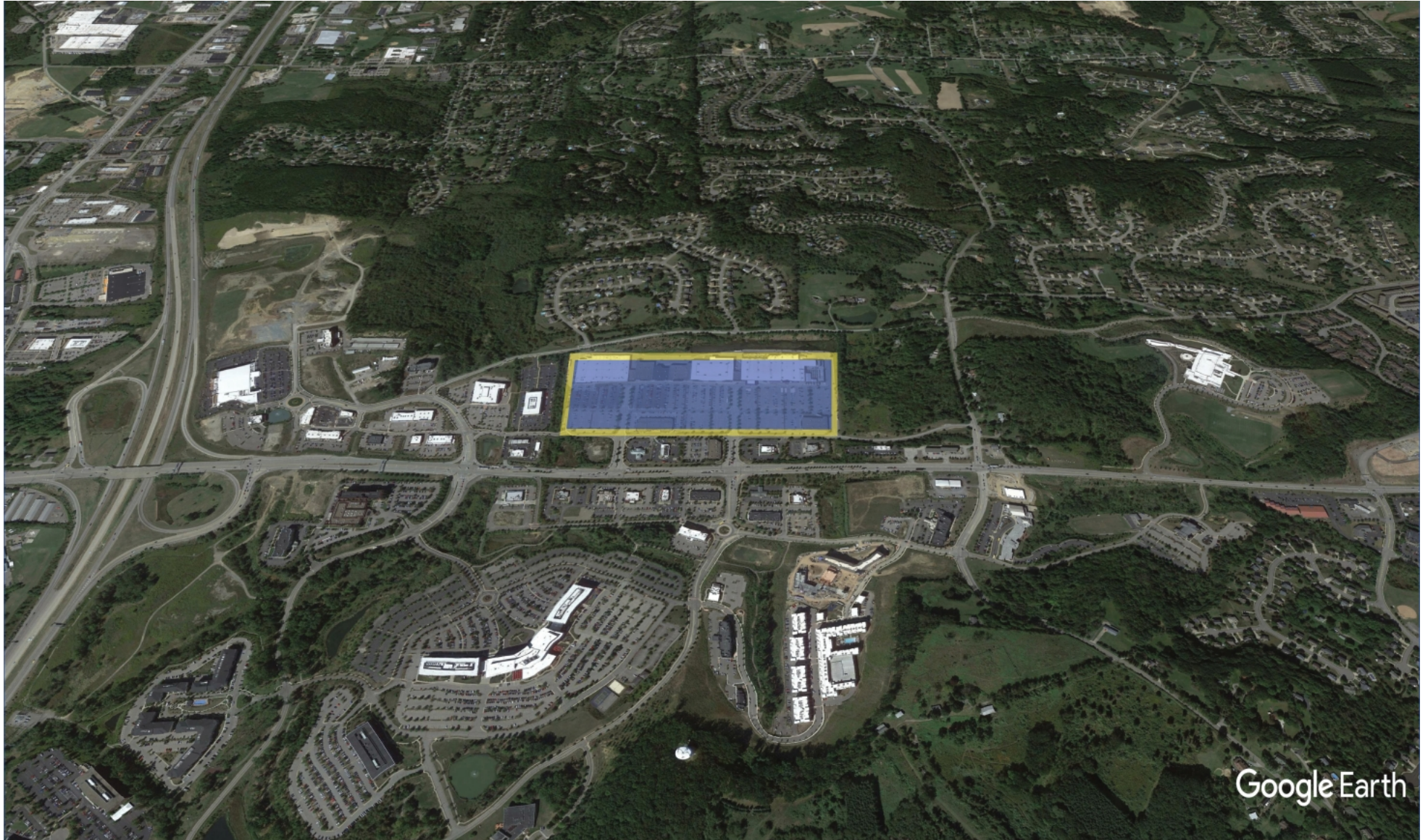




AERIAL



GROSS LEASABLE AREA (GLA)	165,920 SF
PARKING SPACES	2,707
PARKING RATIO	16.32 per 1,000 SF



DENSITY AERIAL

Michael Reigner

Leasing Representative | (410) 427-4442 | mreigner@kimcorealty.com



Cranberry Commons

Pittsburgh, PA

www.kimcorealty.com/190200

■ Non-Controlled 🅐 Curbside Pick-up



	TENANT	SQ FT
2	Lane Bryant	6,049
3	TJ Maxx	30,000
4	PetSmart	19,235
5	Fresh Thyme Farmers Market	31,296
7	Once Upon A Child	5,200
9	Staples	23,884
10	Philly Pretzel Factory	1,244
11	Crumbl - Pittsburgh	1,727
12	Sport Clips	1,236
13	Heartland Dental	2,401
14	Famous Footwear	10,100
17	Visionworks	2,985
18	GNC	1,160
19	Restore Hyper Wellness & [...]	2,500
20	Randstad	1,573
21	Starbucks Coffee	2,330
22	Hobby Express	12,037
24	Freshii	1,580
25	Loafers Bread Company	2,000
26	SkinLab by Dr. LaBrasca	2,197
27	Nail Studio II & Spa	1,004
28	Asurion Tech Repair & [...]	1,569
29	Hand & Stone Massage & Facial	2,613

Disclaimer: This site plan shows the approximate location, square footage, and configuration of the shopping center and adjacent areas, and is only illustrative of the size and relationship of the stores and common areas generally, all of which are subject to change. The showing of any names of tenants, parking spaces, square footage, curb-cuts or traffic controls shall not be deemed to be a representation or warranty that any tenants will be at the shopping center, the square footage is accurate, or that any parking spaces, curb-cuts or traffic controls do or will continue to exist. Moreover, any demographics set forth in this flyer are for illustrative purposes only and shall not be deemed a representation by Landlord or their accuracy. Availability of this property for rent is subject to prior rental or withdrawal of the property from the market at any time without notice.

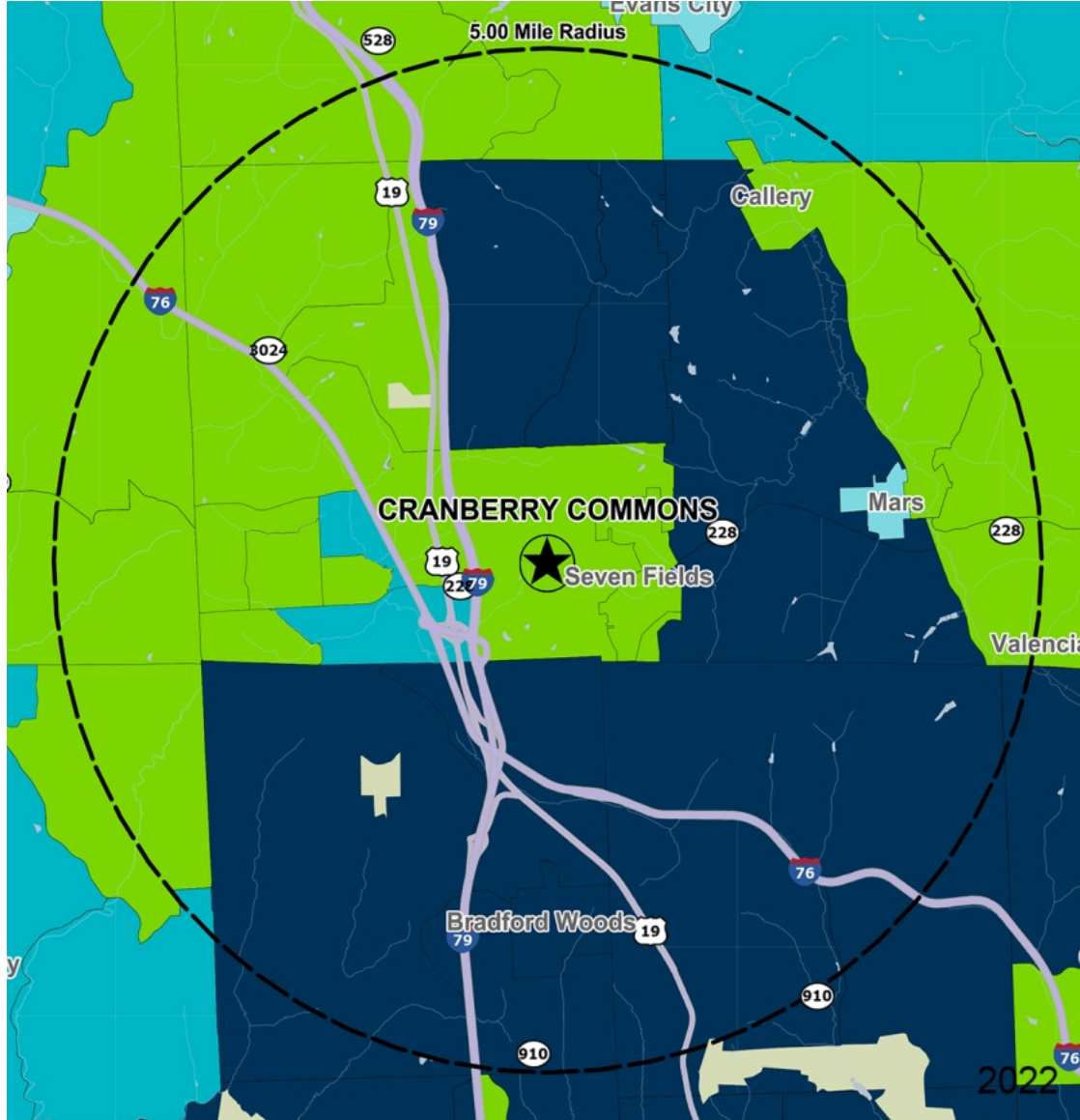
Michael Reigner

Leasing Representative | (410) 427-4442 | mreigner@kimcorealty.com





COMPETITION MAP



by Block Group

Demographics

2022 ESTIMATES	1-MILE	3-MILES	5-MILES
Population	4,729	39,211	78,112
Daytime Pop	6,054	54,760	85,379
Households	1,667	14,660	28,747
Average HH Income	\$143,919	\$154,600	\$158,561
Median HH Income	\$112,013	\$119,981	\$122,397
Per Capita Income	\$50,802	\$58,018	\$58,594

Average Household Income

Popstats, 4Q 2022, Trade Area Systems

- \$150K and up
- \$50K - \$75K
- \$100K - \$150K
- \$75K - \$100K
- \$0K - \$50K



Cranberry Commons

Rte. 228 & Kristoffer Dr., Pittsburgh, PA



Michael Reigner

Leasing Representative

(410) 427-4442

mreigner@kimcorealty.com