



8000 Sunset Strip S.C.

Los Angeles, CA

Los Angeles-Long Beach-Anaheim (CA)



Todd Buckstein

Leasing Representative

(949) 252-3852

tbuckstein@kimcorealty.com





AERIAL



| | |
|---------------------------|-------------------|
| GROSS LEASABLE AREA (GLA) | 170,756 SF |
| PARKING SPACES | 870 |
| PARKING RATIO | 5.09 per 1,000 SF |

Todd Buckstein

Leasing Representative | (949) 252-3852 | tbuckstein@kimcorealty.com





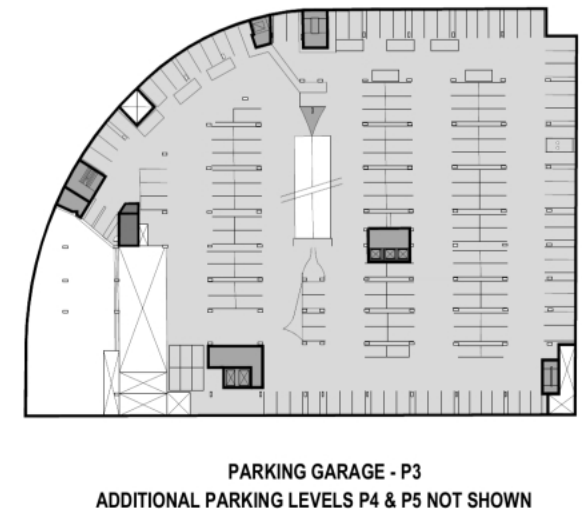
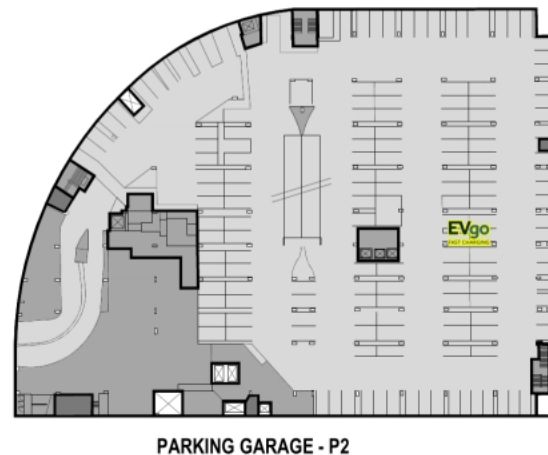
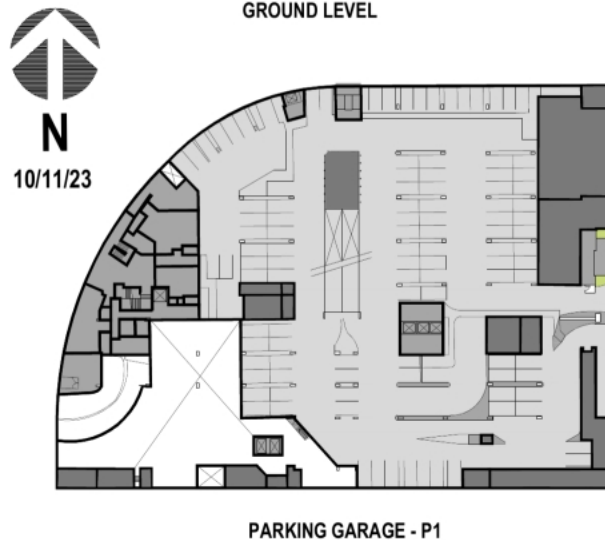
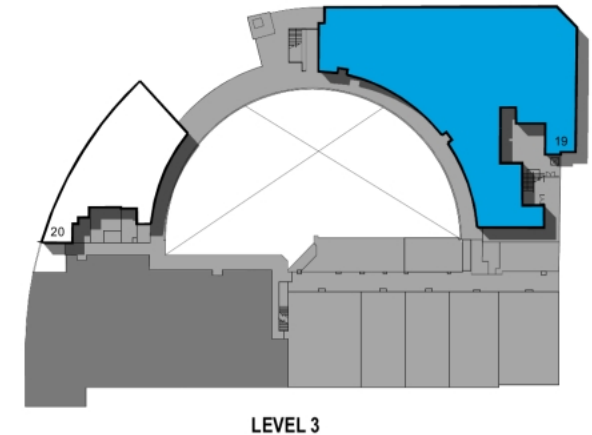
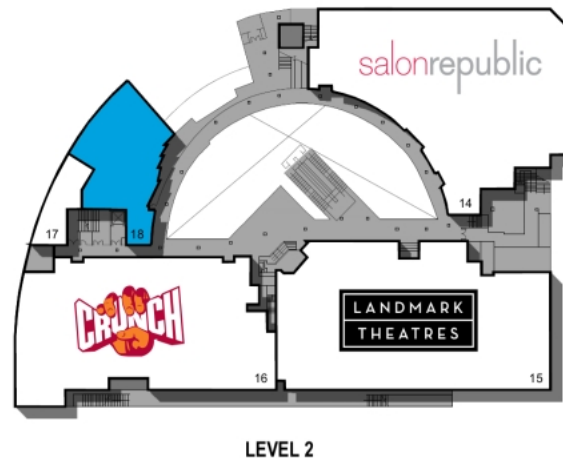
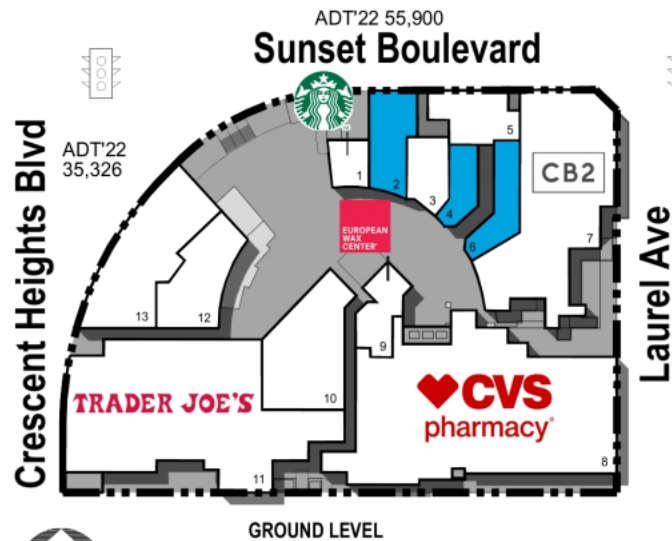
DENSITY AERIAL

Todd Buckstein

Leasing Representative | (949) 252-3852 | tbuckstein@kimcorealty.com



Available



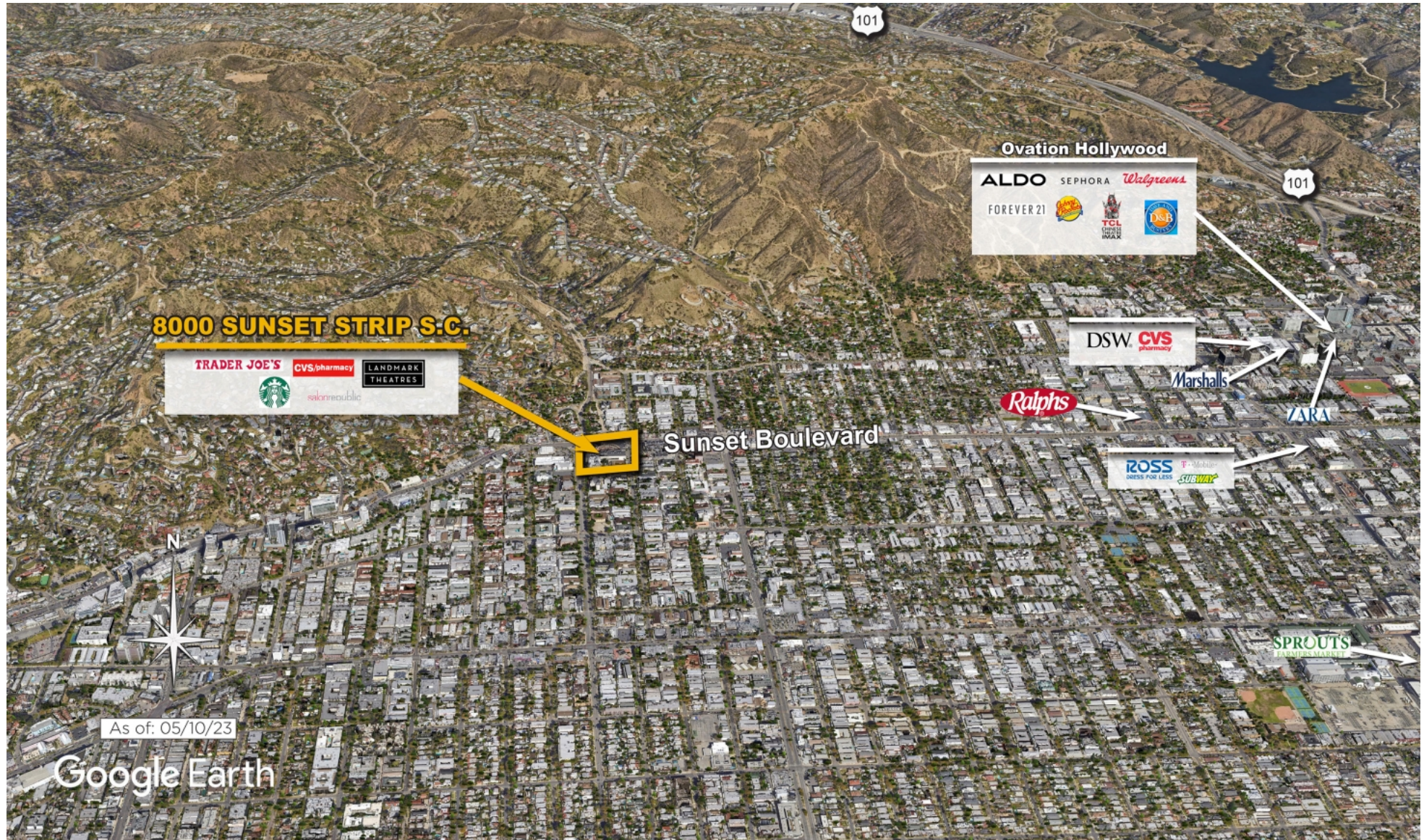
| TENANT | SQ FT | TENANT | SQ FT | TENANT | SQ FT |
|--------------------------------|--------|-------------------------|--------|----------------------------------|--------|
| 1 Starbucks | 944 | 8 CVS | 15,451 | 15 Landmark Theatres Sunset | 24,693 |
| 2 Available | 1,923 | 9 European Wax Center | 1,278 | 16 Crunch Fitness | 33,329 |
| 3 JoJo's Mediterranean Grill | 1,300 | 10 Leased | 4,357 | 17 Trademark Beauty | 1,221 |
| 4 Available | 1,042 | 11 Trader Joe's | 13,860 | 18 Available (Former Restaurant) | 4,834 |
| 5 AT&T, an Authorized Retailer | 1,665 | 12 BB.Q Chicken | 2,571 | 19 Available | 17,247 |
| 6 Available | 1,520 | 13 Wokcano Asian Lounge | 3,595 | 20 Redpill VR | 5,664 |
| 7 CB2 | 15,096 | 14 Salon Republic | 18,185 | | |

Disclaimer: This site plan shows the approximate location, square footage, and configuration of the shopping center and adjacent areas, and is only illustrative of the size and relationship of the stores and common areas generally, all of which are subject to change. The showing of any names of tenants, parking spaces, square footage, curb-cuts or traffic controls shall not be deemed to be a representation or warranty that any tenants will be at the shopping center, the square footage is accurate, or that any parking spaces, curb-cuts or traffic controls do or will continue to exist. Moreover, any demographics set forth in this flyer are for illustrative purposes only and shall not be deemed a representation by Landlord or their accuracy. Availability of this property for rent is subject to prior rental or withdrawal of the property from the market at any time without notice.

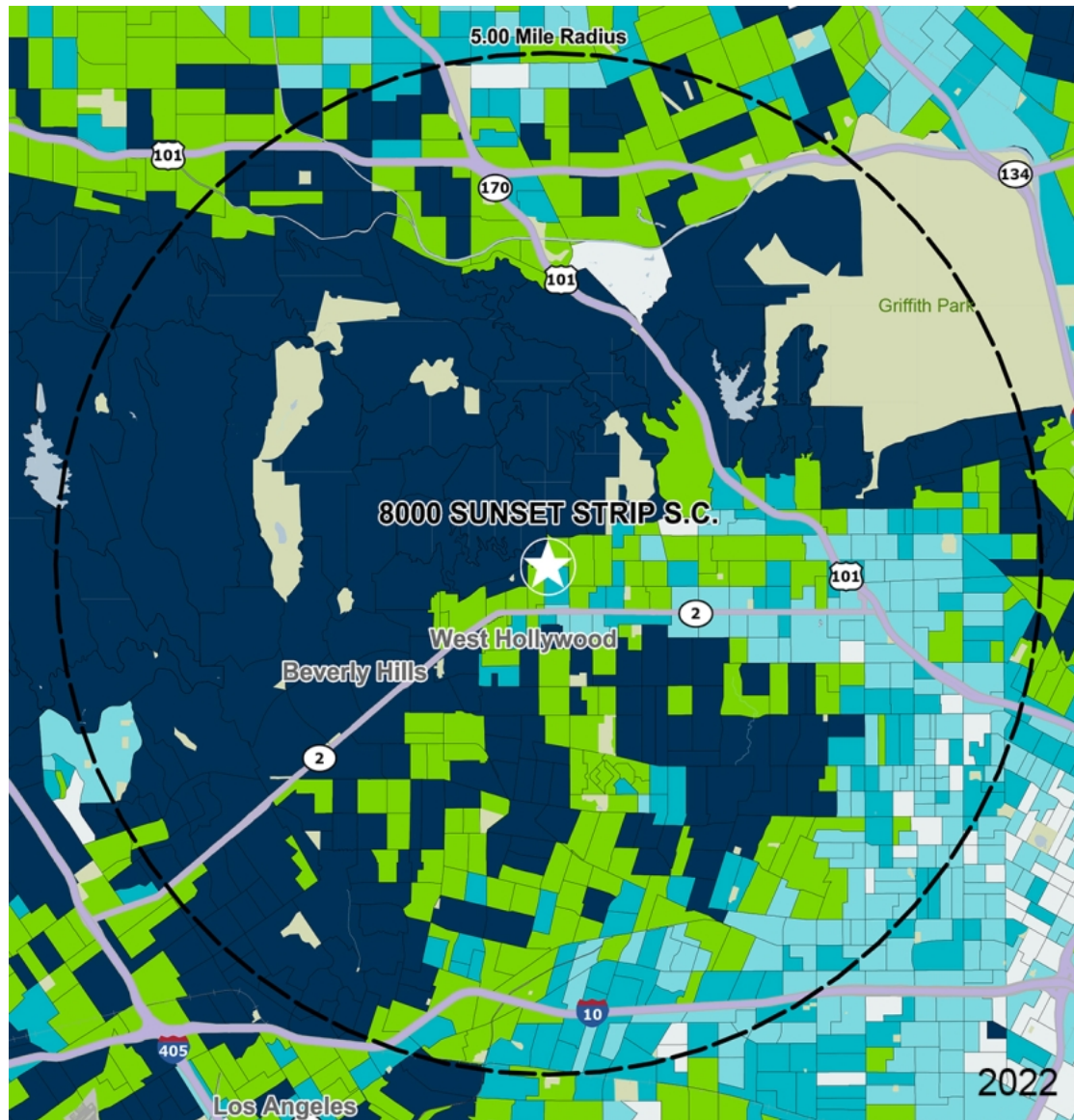
Todd Buckstein

Leasing Representative | (949) 252-3852 | tbuckstein@kimcorealty.com





COMPETITION MAP



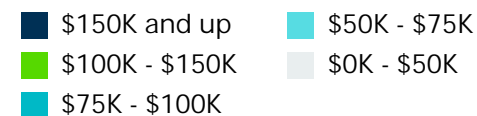
by Block Group

Demographics

| 2022 ESTIMATES | 1-MILE | 3-MILES | 5-MILES |
|-------------------|-----------|-----------|-----------|
| Population | 39,376 | 235,917 | 762,195 |
| Daytime Pop | 33,937 | 316,106 | 902,620 |
| Households | 24,305 | 124,980 | 339,504 |
| Average HH Income | \$123,834 | \$143,493 | \$128,566 |
| Median HH Income | \$83,964 | \$88,393 | \$78,233 |
| Per Capita Income | \$76,987 | \$76,869 | \$57,908 |

Average Household Income

Popstats, 4Q 2022, Trade Area Systems

**Todd Buckstein**

Leasing Representative | (949) 252-3852 | tbuckstein@kimcorealty.com

8000 Sunset Strip S.C.

Sunset Blvd. & Crescent Height Blvd., Los Angeles, CA



Todd Buckstein

Leasing Representative

(949) 252-3852

tbuckstein@kimcorealty.com